

# GreenMax-B

医用电梯 BED ELEVATOR

# GreenMax-B

BED ELEVATOR



# BED ELEVATOR

## 科技领先·关怀倍至

Science and Technology Keeping Ahead , Offer Best Care

在迎接医疗人文关怀与医疗服务经济的新时代，广日利用累计30多年的电梯经验，研发新一代GreenMax-B系列智能环保医用电梯，提供殷勤的服务，构建和谐社会，为医疗事业可持续发展提供最佳垂直运输方案。

In the new tide of medical treatment ,human care and medical treatment service economy, Guangri research and develop a new generation .GreenMax-B series, which is a type of intellectual environment Bed elevator on the basis of 30years elevator experience. Provide complaisant service, build harmonious society, provide the best transportation solution for the continuous development of medical treatment.

GreenMax-B医用电梯的研发倡导医疗领域所遵循的精神——救死扶伤、关爱患者，奉献爱心，是广日珍惜生命、珍惜资源的基本准则。

The research and development of Bed Elevator Green Max-B spark plugs the spirit following in the medical treatment industry. "heal the wounded and rescue the dying, treat the sufferer with excessive care, offer charity is the basic rule of Guangri cherish life and resources.

# HIGH TECH HUMANIZATION

## 人性化设计·高技术集成 Human Design and High Technology Integration

→ GreenMax-B医用电梯采用32位微机一体化控制系统，将拖动控制系统和逻辑控制系统合理地结合在一起，将控制柜的接线减到最少，有效地增强了电控系统的抗干扰和EMC能力。

Bed elevator GreenMax-B adopts 32 bit micro processor one integrated control system, combine reasonably the drag control system and logical control system. Reduce the connection of control cabinet to least. Buildup effectively the anti-jamming of electronic system and EMC power.

→ GreenMax-B医用电梯将同轴传动与先进的伺服变频控制技术良好结合，既能使驱动力强劲，又能使电梯运行平稳、停层精确，使进出电梯的病患者及病床能顺利通过，无障碍。

Bed elevator GreenMax-B combine perfectly the coaxial transmission and advanced servo frequency conversion control technology, which can not only make the drive more strong but also make elevator travel smoothly, landing exact, the patient and sickbed can enter and out without any obstacle.

→ GreenMax-B医用电梯的整梯效率高，完善的故障提示和处理系统能够及时准确地反映电梯故障点，维保轻松，节省维修时间和维修成本。透过专业的服务品质及亲切的敬业精神，展现人类独特的人文关怀。

GreenMax-B Bed elevator is high effective, perfect trouble indication and the processing system can indicate the trouble place timely and exactly, repair and maintenance is easy saving maintain time and cost.through special service and friendly hard work spirit, exhibit the special care of human.

→ 轿厢净空高，宽敞明亮，空气流动性好，令患者、医务人员感觉舒适美观，人性化设计为乘客营造舒适的乘坐空间。

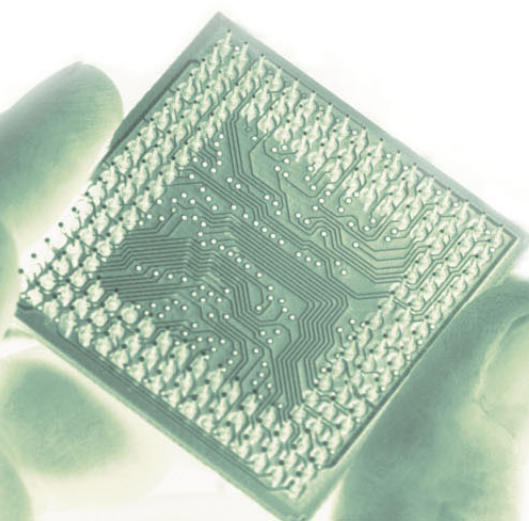
The headroom of car is high, spacious and bright, good air fluidity, offer a comfort and beautiful feeling to patient and doctors. Human design build comfortable riding space.

→ GreenMax-B医用电梯有能够满足医院不同的进出要求的多种开门方式，为医务人员提供便利。针对医院的特殊需要，病床电梯增加了许多功能设置，满足不同患者及医务人员不同的需要。

Bed elevator of GreenMax-B has various door opening options to meet different entering and out requirements. It provides convenience to clerks of hospital. There are many functions configuration as per the special requirement of hospital. meet different requirement from different patient and clerks of hospital.

→ GreenMax系列电梯采用CAN总线串行通讯网络化系统，并具有自学习、自诊断、故障记录、远程监控等功能，智能和网络化便于电梯的维护和管理。

GreenMax series elevator adopts CAN mains consecutive communication latticing system, and it has so many functions such as the self-learning, self checking, ailure logging, long-distance monitoring, intellectual network is convenient for the maintenance and management.



# SAFETY



## RELIABLE

## 安全可靠

Safe and reliable

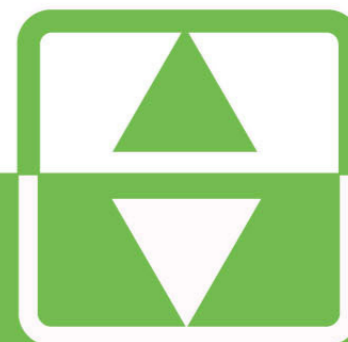
完全符合GB7588《电梯制造与安装安全规范》，设计采用国际先进技术多重安全保护装置，整机具有完善的安全保护措施。一个32位主CPU和3个副CPU互相监控，能够及时发现突发情况并作相应的保护措施，确保运行安全可靠确保电梯运行安全可靠，完全符合医用要求。

Completely comply with GB7588 " Elevator manufacture and installation safety criterion " adopts international advanced technology multiple safety protection device, complete elevator with a perfect safety protection measure. one 32 bit main CPU and three slave CPU supervise each other, which can find outburst trouble and protect correspondingly, ensure the travel safe and reliable completely comply with the requirement of hospital.



# GUANGRI GreenMax-B

## 节省·节能·环保



PROTECT ENVIRONMENT  
ENERGY-SAVING



# +BED ELEVATOR

→ GreenMax-B医用电梯主机应用永磁同步无齿曳引机驱动，使整梯效率提高了25%以上，高效节能。

GreenMax-B bed elevator adopts the permanent-magnet synchronous imperforate tractor, improve the efficiency above 25%. High efficiency of the electricity charge.

→ 主机体积小，一体化控制系统和紧凑的机房布置，使机房占用面积减少到传统机房的60%左右，与井道的尺寸一致，机房高度相应降低，节省土建投入，同时美化了建筑物外观。

Small-size main machine, integrated control system and compact arrangement of machine room decrease the machine room space by 60%, the dimension of which is the same as the shaft, the lower height of the machine room decrease the cost of engineering structure and beautify the building facade as well.

→ 采用无齿轮曳引机后主机减少了油污的污染，使环境更加清洁，消除了传统传动引起的噪音和振动，降低了噪音污染，体现了以人为本，绿色环保社会意识。

It doesn't need so much lubrication with imperforate tractor machine, not only makes the environment cleaner, but also eliminates the noise and tremor of the traditional method. Reduce the noise pollution for showing the social consciousness of people oriented and environmental protection.

● 标准配置 STANDARD CONFIGURATION



- 轿顶**  
CAR CEILING
- 标准**  
STANDARD
- 乳白色丙烯大方灯罩  
风扇通风  
钢板喷塑顶板
- Milk-white propylene square lampshade,  
ventilating by Axial-flow fan,  
and ceiling board of spray-painted steel sheet
- 壁板**  
WALL
- 地板**  
FLOOR
- 扶手**  
HANDRAIL
- 标准**  
STANDARD
- 发纹不锈钢  
stainless steel
- GF8230 (PVC)
- 不锈钢扁平扶手  
Flat handrail of stainless steel

▼ 地板 FLOOR

GF8230 (标准配置) GF8230 (standard configuration)	GF8280 (有偿配置) GF8280 (optional configuration, costs extra)	GF8310 (有偿配置) GF8310 (optional configuration, costs extra)	GF8350 (有偿配置) GF8350 (optional configuration, costs extra)

▼ 门套、轿壁、轿门、层门喷漆颜色 COLOR OF FOR DOOR JAMBS, WALLS, DOORS AND LANDING DOOR

SLQ-A001 半光奶黄(喷漆) SLQA001 Semi-gloss cream (paint)	SLQ-A002 半光果绿(喷漆) SLQA002 Semi-gloss fruit-green (paint)	SLQ-A003 半光浅灰(喷漆) SLQA003 Semi-gloss light gray (paint)	SLQ-A009 半光灰绿(喷漆) SLQA009 Semi-gloss sage green (paint)
SLQ-C042 哑光银(喷漆) SLQC042 Semi-gloss silver (paint)	C160 黄灰皱纹(喷塑) C160 Yellow-gray shrink (plastics)	C193 半光皱纹(喷塑) C193 semi-gloss shrink(plastics)	EP22 高光果绿(喷塑) EP22 High-gloss fruit-green(spray plastics)

轿内 INSIDE THE CAR

◀ COP7-SP0



厅外 HALL AREA

▼ HBI1-PP



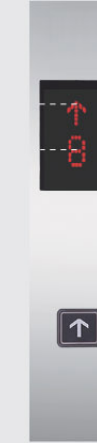
单梯  
Single

▼ HBI1-2PP



并联  
Duplex

▼ HBI1-SP0



单梯  
Single

▼ HBI1-2SP0



并联  
Duplex

▼ 不锈钢标准图案 Standard patterns of stainless steel

发纹不锈钢GY-000 Hairline stainless steel GY-000	蚀刻不锈钢GY-103 Etched stainless steel GY-103	时刻不锈钢GY-108 Etched stainless steel GY-108	镜面不锈钢GY-110 Mirror stainless steel GY-110

● 标准配置 STANDARD CONFIGURATION



标准按钮  
Standard button

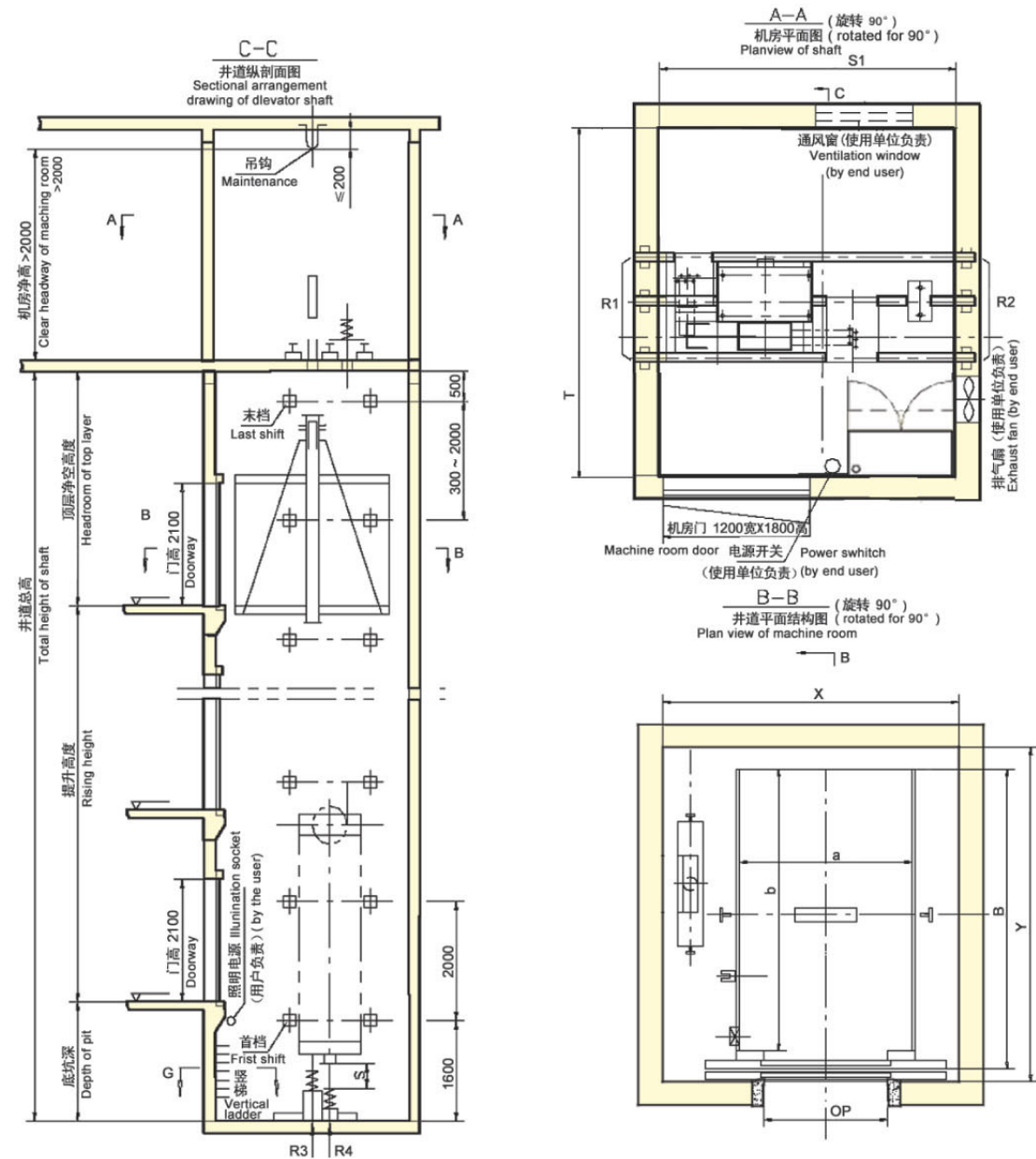


点阵显示  
Matrix-type indicator



## ● 中分单开门井道尺寸

Dimensions of shaft with midsplit single-opening door

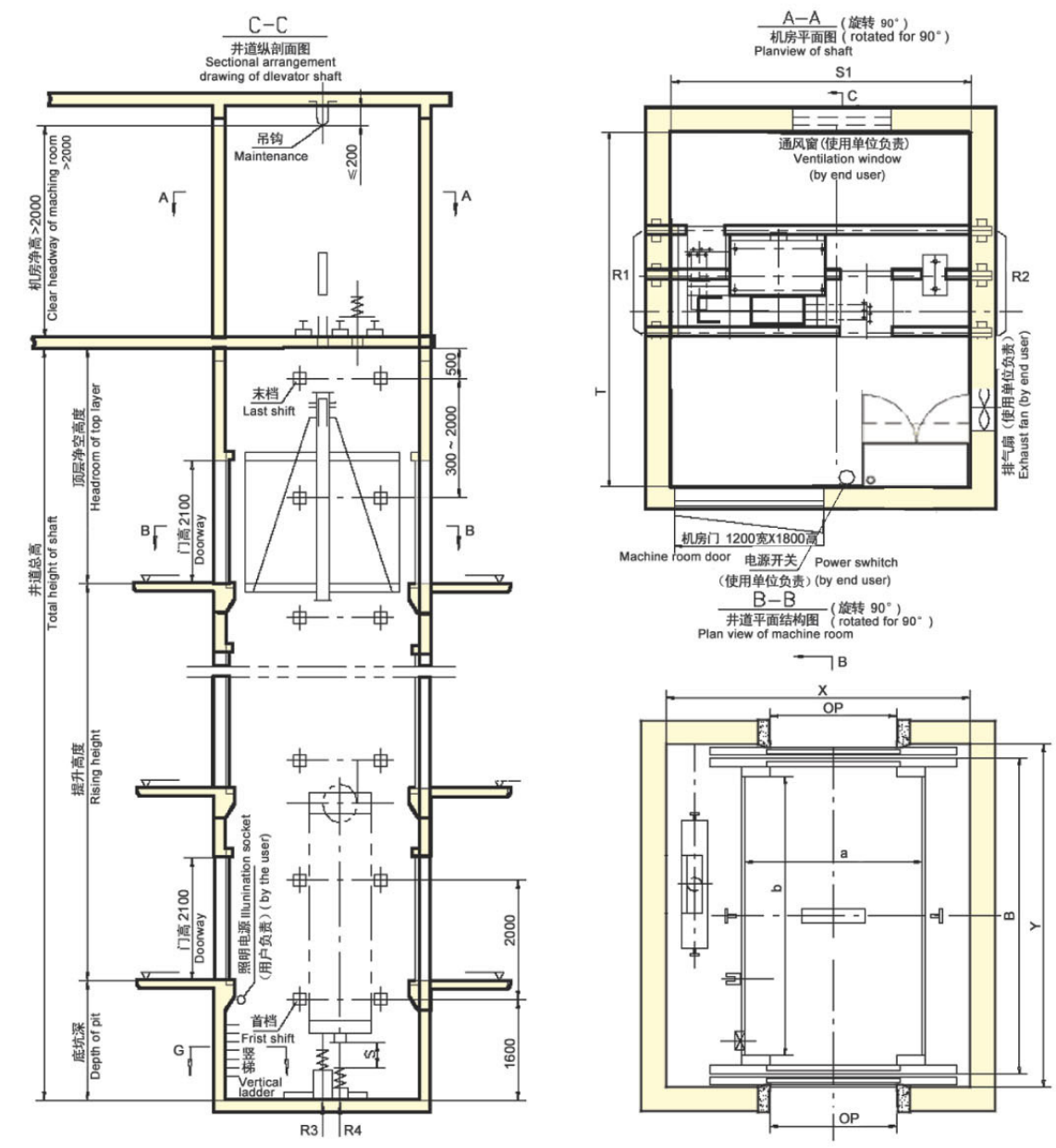


速度 (m/s) Speed(m/s)	顶层高度(mm) Headroom of top layer(mm)	底坑深度(mm) Pit depth(mm)	
		提升高度 < 50米 Rising height < 50m	提升高度 ≥ 50米 Rising height ≥ 50m
1.0	4150	1400	1550
1.5	4300	1550	1700
1.75	4350	1550	1700

型号 Model	载荷 (kg) Load(kg)	速度 (m/s) Speed(m/s)	轿厢尺寸cardimensions 外A x B Outside A x B 内a x b Inside a x b	梯井尺寸X x Y Shaft dimensions X x Y	开门OP Door opening	电机功率(Kw) Motor power(Kw)	机房尺寸S1 x T Shaft dimensions S1 x T
Max-B1600-C0	1600	1.0/1.5/1.75	1450 x 2582 (1400 x 2400)	2400 x 2950	1000	11/19.5/19.5	2400 x 2950

## ● 中分双开门井道尺寸

Dimensions of shaft with midsplit two-opening door



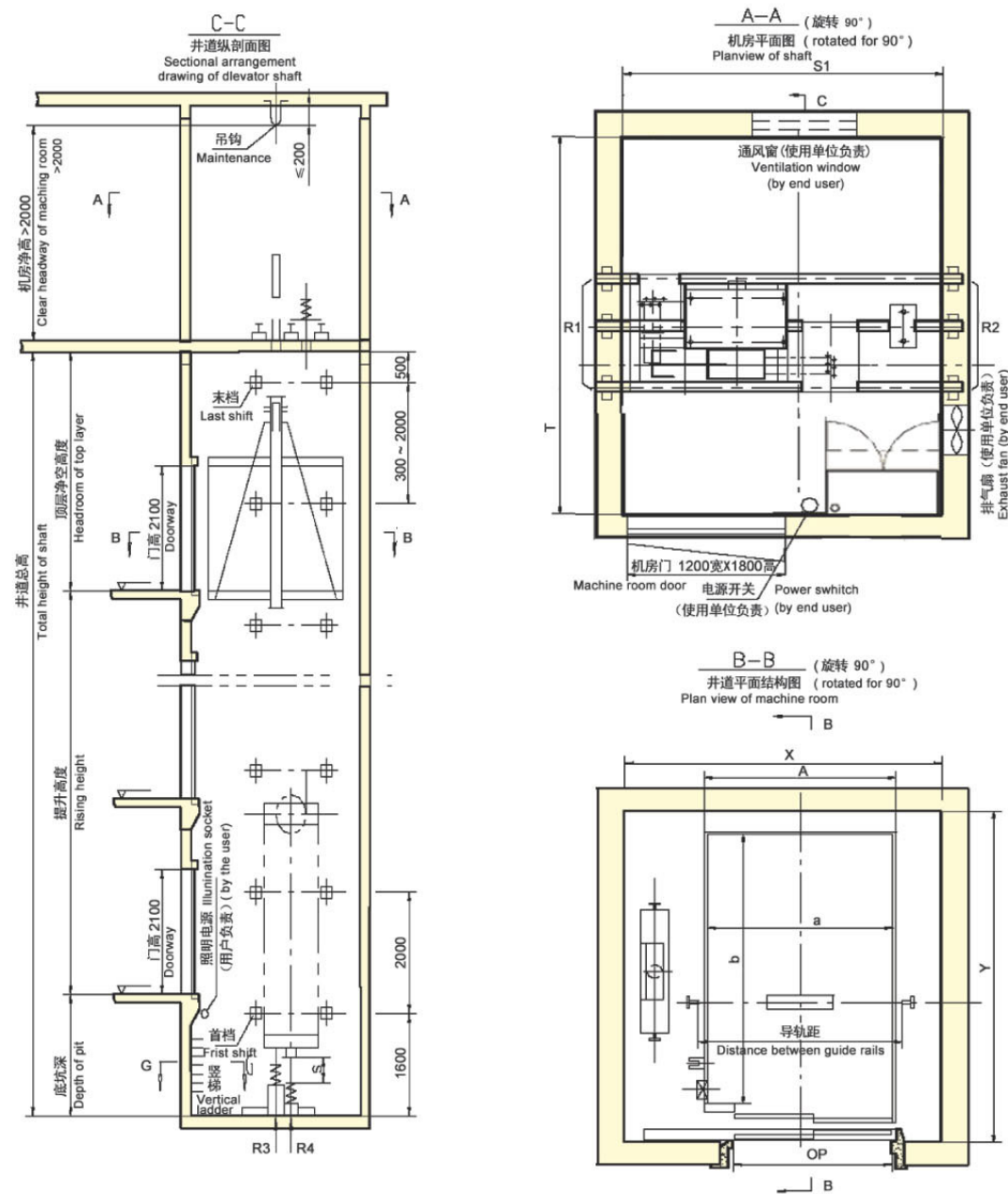
速度 (m/s) Speed(m/s)	顶层高度(mm) Headroom of top layer(mm)	底坑深度(mm) Pit depth(mm)	
		提升高度 < 50米 Rising height < 50m	提升高度 ≥ 50米 Rising height ≥ 50m
1.0	4150	1400	1550
1.5	4300	1550	1700
1.75	4350	1550	1700

型号 Model	载荷 (kg) Load(kg)	速度 (m/s) Speed(m/s)	轿厢尺寸cardimensions 外A x B Outside A x B 内a x b Inside a x b	梯井尺寸X x Y Shaft dimensions X x Y	开门OP Door opening	电机功率(Kw) Motor power(Kw)	机房尺寸S1 x T Shaft dimensions S1 x T
Max-B1600-C0	1600	1.0/1.5/1.75	1450 x 2714 (1400 x 2400)	2400 x 2950	1000	11/19.5/19.5	2400 x 2950



## ● 旁开单开门井道尺寸

Dimensions of shaft with side single-opening door

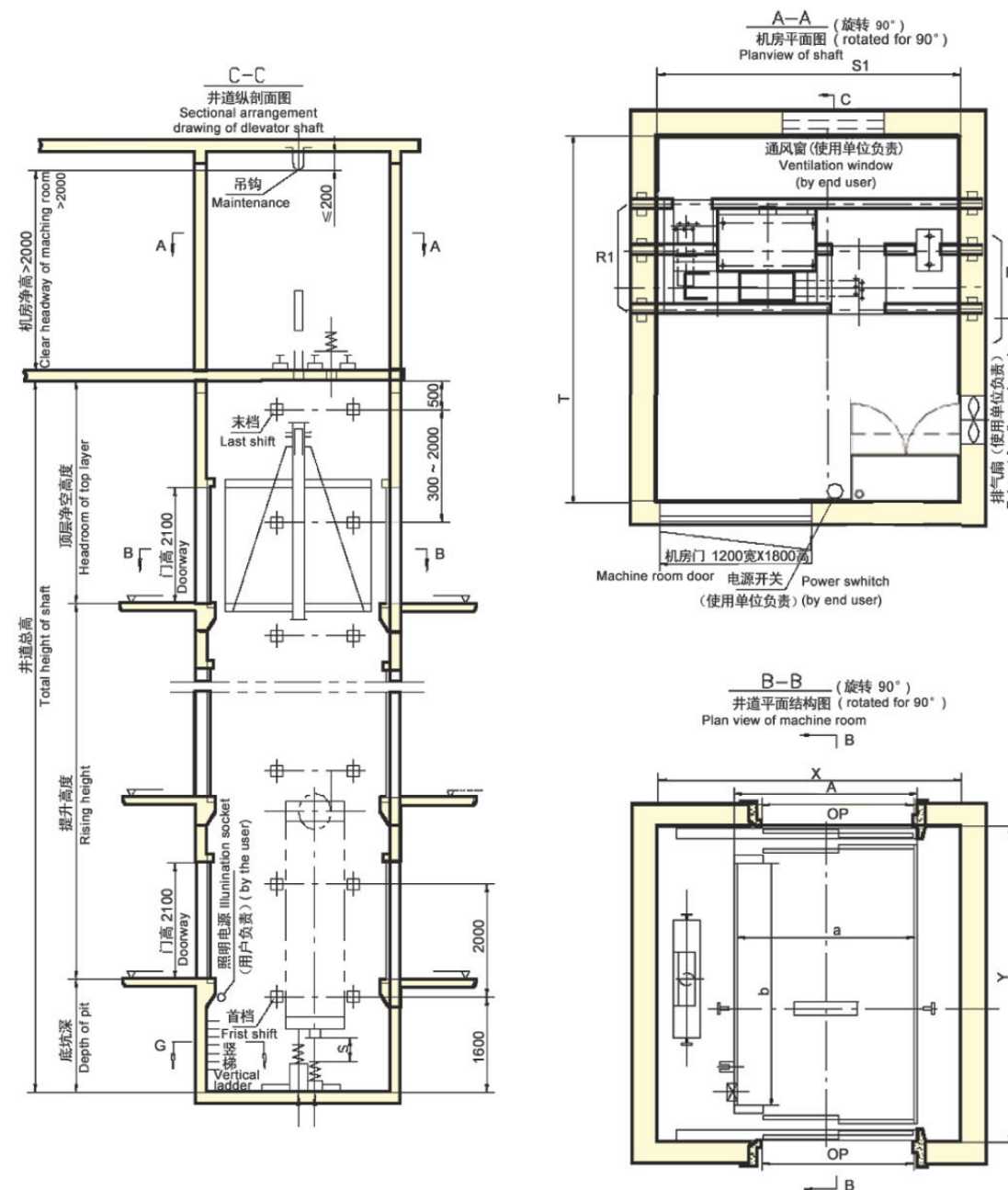


速度 (m/s) Speed (m/s)	顶层高度 (mm) Headroom of top layer (mm)	底坑深度 (mm) Pit depth (mm)	
		提升高度 < 50米 Rising height < 50m	提升高度 ≥ 50米 Rising height ≥ 50m
1.0	4150	1400	1550
1.5	4300	1550	1700
1.75	4350	1550	1700

型号 Model	载荷 (kg) Load (kg)	速度 (m/s) Speed (m/s)	轿厢尺寸 dimensions 外 A x B Outside A x B 内 a x b Inside a x b	梯井尺寸 X x Y Shaft dimensions X x Y	开门 OP Door opening	电机功率 (Kw) Motor power (Kw)	机房尺寸 S1 x T Shaft dimensions S1 x T
Max-B1600-2S	1600	1.0/1.5/1.75	1450 x 2620 (1400 x 2400)	2400 x 2950	1200	11/19.5/19.5	2400 x 2950

## ● 旁开双开门井道尺寸

Dimensions of shaft with side two-opening door



速度 (m/s) Speed (m/s)	顶层高度 (mm) Headroom of top layer (mm)	底坑深度 (mm) Pit depth (mm)	
		提升高度 < 50米 Rising height < 50m	提升高度 ≥ 50米 Rising height ≥ 50m
1.0	4150	1400	1550
1.5	4300	1550	1700
1.75	4350	1550	1700

型号 Model	载荷 (kg) Load (kg)	速度 (m/s) Speed (m/s)	轿厢尺寸 dimensions 外 A x B Outside A x B 内 a x b Inside a x b	梯井尺寸 X x Y Shaft dimensions X x Y	开门 OP Door opening	电机功率 (Kw) Motor power (Kw)	机房尺寸 S1 x T Shaft dimensions S1 x T
Max-B1600-2S	1600	1.0/1.5/1.75	1450 x 2790 (1400 x 2400)	2400 x 2950	1200	11/19.5/19.5	2400 x 2950

## GreenMax-B医用电梯基本功能

Schedule of Basic functions of Guangri Bed Elevator GreenMax-B

基本功能 Basic functions	备注 Remarks	基本功能 Basic functions	备注 Remarks
全集选控制 All collective selective control		超速保护 Over-speed protection	
检修运行方式 Overhaul traveling mode		运行超时保护 Over-running time protection	
召唤功能 Call function		防溜车保护 Anti-stall protection	
电梯自救运行 Automatic rescue traveling		防终端越程保护 Anti-terminal over-running protection	
到站自动开门 Automatic landing door-opening		安全接触器触点检测保护 Trigger point detection protection of safety trigger	
自动关门 Auto door closing		变频器多重保护 Multiple protection of frequency converter	
对讲机通讯 Interphone communication		电梯运行次数显示 Indication of elevator running cycles	
警铃 Alarm bell		欠压保护 Under-voltage protection	
关门按钮提前关门 Closing button for door-closing in advance		欠相保护 Under-phase protection	
开门按钮开门 Door-opening button for door opening		停电照明功能 Emergency car lighting	
故障重开门 Reopen in case of trouble		防门锁短接 Protection against false door locking	
起动补偿 Starting compensation		换站停靠 Next landing	
满载直驶 Bypass when full load		故障显示 Indication of troubleshooting	
闲驶时轿内照明、风扇自动断电 Automatic shut-off of lighting and exhaust fan inside the car during idle running period		逆向运行保护 Protection against reverse travel	
故障历史记录 History record of trouble		错误指令取消 Cancellation of false call	
井道层楼数据自学习 Data self-study of shaft floor		反向时自动消指令 Automatic cancellation in case of reversal car call	
层楼位置信号的自动修正 Automatic correction of landing floor signal		点阵式层楼显示器 Matrix-type floor indicator	
泊梯 Parking		楼层滚动显示 Rolling display of travel direction	
火灾紧急返回运行 Emergency return in case of fire	非消防梯 Non fire-proof elevator	微动平层功能 Function of micromotion leveling	提升 > 45米 Lifting height > 45m
门区外不能开门保护措施 Safety measures of door lockup outside door area		磁角度自学习功能 Magnetic degree self-learning function	
安全触板 Safety edges for door		消防员操作 Fireman operation	非消防梯 Non-fire elevator
关门受阻保护装置 Protection device for door obstruction		消防信号反馈 Feedback of fire signals	非消防梯 Non-fire elevator
超载保护 Over-load protection		延长开门时间 Extension the time of closing the door	

## GreenMax-B医用电梯选配功能

Schedule of Option functions of Guangri Bed Elevator GreenMax-B

有偿选配 Optional with costs extra	备注 Remarks	有偿选配 Optional with costs extra	备注 Remarks
停电自救平层 Automatic rescue leveling in failure of power supply		到站钟 Arrival chime	
光电保护 Safety ray protection		语音报站 Voice announcer	
光幕保护 Light beam screen protection		小区(或大楼)监控 Quarter (or building) monitoring	
下集选控制 Down collective control		防恶作剧功能 Anti-tamper function	> 6层 > 6 floors
服务层的任意设置 Discretionary setup of service floor		自动返基站 Automatic return to home landing	
层楼显示字符的多样性设定 Multiple setup modes of floor indicating characters		IC卡功能 card function	
司机操作 Attendant service		并联控制运行 Duplex control operation	
司机优先定向 Priority of attendant's direction	司机功能时附带 Attached to operator function	双开门 Double door opening	
司机按钮直驶 Attendant's no-stop running button	司机功能时附带 Attached to operator function	群管理功能 Group management function	3-8台
专用操作 Special operation		盲人按钮 Button for blind people	
值班室通话 Duty room communication	不含值班室的线 Excluding the connection of duty room	预留摄像头接口 Allow an interface of camera	

## GreenMax-B医用电梯型号规格 Models and specifications of Guangri Bed Elevator GreenMax-B

NO	型号 Model	载重(kg) Load (kg)	速度(m/s) Speed(m/s)	电机功率 Kw
1	Max-B1600-CO1.0	1600	1.0	11
2	Max-B1600-CO1.5	1600	1.5	19.5
3	Max-B1600-2S1.0	1600	1.0	11
4	Max-B1600-2S1.5	1600	1.5	19.5
5	Max-B1600-CO1.75	1600	1.75	19.5
6	Max-B1600-2S1.75	1600	1.75	19.5

## GreenMax-B医用电梯轿厢装饰 Schedule of decorations for car of Guangri Bed Elevator GreenMax-B

项目 Items	标准规格 Standard Specifications	有偿选配 Options with costs extra
吊顶 Suspended ceiling	标准规格G2006 Standard specifications G2006	
		豪华型多种吊顶可供选择 Various deluxe ceiling for choice
侧板、桥板、横梁板 Side board, car door, beam board	发纹不锈钢 Hairline stainless steel	
		钢板喷塑 Painted steel plate
		发纹不锈钢与镜面不锈钢搭配 Hairline stainless steel matched Mirror stainless steel
		镜面不锈钢 Mirror stainless steel
		镜面蚀刻不锈钢(标准图案) Mirror etched stainless steel (standard pattern)
	钢板贴膜 Steel-plate with film	
轿围 Car wall foot skirt	发纹不锈钢 Hairline stainless steel	
门地坎 Landing sill	硬制铝型材 Hard aluminum profile	
操纵箱(面板) Operation panel	发纹不锈钢 Hairline stainless steel	
其他 Others		扶手 Handrail
小门套 Small door frame	发纹不锈钢(首层) Hairline stainless steel (The first floor)	
	钢板喷塑(其他层) Painted steel plate (Other floors)	发纹不锈钢(其他层) Hairline stainless steel (Other floors)
大门套 Big door frame		钢板喷塑 Painted steel plate
		发纹不锈钢 Hairline stainless steel
层门地坎 Floor landing sill	硬制铝型材 Hairline stainless steel	
层门 Floor door	发纹不锈钢(首层) Hairline stainless steel (The first floor)	
	钢板喷塑(其他层) Painted steel plate (Other floors)	发纹不锈钢(其他层) Hairline stainless steel (Other floors)
		镜面不锈钢 Mirror stainless steel
		镜面蚀刻不锈钢(标准图案) Mirror etched stainless steel (standard pattern)