

# 全国服务热线 Hotline in China 400-8866-130

www.guangri.com.cn



欢迎关注广日电梯官方微信

## 总部 The Headquarters

广州广日电梯工业有限公司

地址：广州市番禺区石楼镇国贸大道南636号

ADD: 636 South of GuoMao Road Shilou County

Panyu District, Guangzhou

电话(Tel): +86-20-3922 1188

传真(Fax): +86-20-3922 1155

## 营工中心 Sales and Engineering Headquarters

地址：广州市天河区科新路2号

ADD: No.2 of Kexin Road TianHe District, Guangzhou

电话(Tel): +86-20-8770 5706

传真(Fax): +86-20-8779 2613

## 进出口科 Import & Export

电邮(E-mail): export-dept@guangri.com.cn

电话(Tel): +86-20-8770 5706

传真(Fax): +86-20-8779 2613

## 驻外营销公司

Distribution Company out of Guangzhou

广州广日电梯工程有限公司  
地址：广东省广州市天河区天河路238号华龙大厦6楼  
电话：020-3113 1008

深圳市广日电梯维修服务有限公司  
地址：深圳市福田区八卦一路鹏益花园3栋1903室  
电话：0755-2584 9770

珠海市广日电梯工程服务有限公司  
地址：广东省珠海市吉大石花东路58号华景花园23栋地下  
电话：0756-3355 801

佛山广日电梯工程有限公司  
地址：广东省佛山市汾江中路大观街4号  
电话：0757-8224 3455

粤西服务中心  
地址：广东省湛江市霞山区人民大道南34号湛江大厦905室  
电话：0759-2221 620

广州广日电梯工业有限公司汕头分公司  
地址：广东省汕头市龙湖区长江路23号新一城商业中心2幢1604-1607号  
电话：0754-8992 3004 / 87263 404

梅州服务中心  
地址：广东省梅州市梅江区彬芳大道88号新金雁大酒店2楼  
电话：0753-2262 007

广州广日电梯工业有限公司清远分公司  
地址：广东省清远市清城区人民一路8号东骏豪庭4号楼1503  
电话：0763-3787 100

广州广日电梯工业有限公司惠州分公司  
地址：广东省惠州市江北文明一路9号富坤大厦809-810室  
电话：0752-2203 161

东莞服务中心  
地址：广东省东莞市莞城区东纵路地王广场商务中心603室  
电话：0769-2223 8516

广州广日电梯工业有限公司湖南分公司  
地址：湖南省长沙市雨花区韶山中路419号凯宾商业广场南塔1705-1708室  
电话：0731-8990 7817 / 8579 2218

株洲服务中心  
地址：湖南省株洲市天元区奥园广场一期1栋2单元1208室  
电话：0731-2828 2921

衡阳服务中心  
地址：湖南省衡阳市蒸湘区白云路66号君馨名邸5号楼1204室  
电话：0734-8333 034

常德服务中心  
地址：湖南省常德市武陵区滨湖路万业城单元604室  
电话：0736-7178 996

吉首服务中心  
地址：湖南省吉首市乾州新城世纪山水12栋104  
电话：0743-8711 658

广州广日电梯工业有限公司河南分公司  
地址：河南省郑州市郑东新区商务内环11号楼金成东方国际1301室  
电话：0371-5567 8625

漯河服务中心  
地址：河南省漯河市郾城区海河路与舟山路交叉口向东50米

广州广日电梯工业有限公司北京分公司  
地址：北京市石景山区八大处路49号点石商务公园1号楼1007、1008室  
电话：010-8878 5366

内蒙古服务中心  
地址：内蒙古包头市青山区青年路万达广场8号楼3单元405  
电话：0472-5245 033

广州广日电梯工业有限公司天津分公司  
地址：天津市河西区黑牛城道与紫金山路交口新世纪城15-4-601室  
电话：010-5263 8621

广州广日电梯工业有限公司河北分公司  
地址：河北省石家庄市裕华区槐安东路152号金源商务广场018幢2-501  
电话：0311-8529 1800

广州广日电梯工业有限公司湖北分公司  
地址：湖北省武汉市江汉区中央商务区泛海国际SOHO城4号楼18层1号  
电话：027-6566 2839

襄阳服务中心  
地址：湖北省襄阳市樊城区松鹤路乔营小区31栋3单元6楼  
电话：027-6566 2839

广州广日电梯工业有限公司辽宁分公司  
地址：辽宁省沈阳市苏家屯区南京南街1208号奥园国际城99号楼1301  
电话：024-3153 3809

吉林服务中心  
地址：吉林省长春市南关区吉顺街与解放大路交汇 长春国际商务中心  
B-一区1202室  
电话：0431-8173 8126

广州广日电梯工业有限公司黑龙江分公司  
地址：黑龙江省哈尔滨市道里区群力大道星光耀广场（一期）办公  
2号楼2212室  
电话：0451-8480 7630

广州广日电梯工业有限公司江苏分公司  
地址：江苏省南京市汉中路185号鸿运大厦9楼  
电话：025-5225 8710

广州广日电梯工业有限公司南通分公司  
地址：江苏省南通市港闸区金海岸广场1幢1610  
电话：0513-5588 0474

广州广日电梯工业有限公司徐州分公司  
地址：江苏省徐州市泉山区西安北路6号恒茂大厦2706室  
电话：0516-8558 1557

广州广日电梯工业有限公司上海分公司  
地址：上海市杨浦区国露路458弄15号301室  
电话：021-3362 6178

广州广日电梯工业有限公司杭州分公司  
地址：浙江省杭州市下城区瑞银街108号1幢416室  
电话：0571-8693 3827

广州广日电梯工业有限公司江西分公司  
地址：江西省南昌市高新区京东大道177号群辉大厦606室  
电话：0791-8855 0015

江西莱菱电梯工程有限公司  
地址：江西省南昌市青山湖区洛阳路现代庄园90号  
电话：0791-8815 3437

广州广日电梯工业有限公司安徽分公司  
地址：安徽省合肥市政务区祁门路333号新地中心C座1804室  
电话：0551-6264 8265

蚌埠服务中心  
地址：安徽省蚌埠市蚌山区新地城市广场6栋2单元701室  
电话：0552-3075 880

广州广日电梯工业有限公司山东分公司  
地址：山东省济南市高新区舜华路2000号舜泰广场9号楼北楼705A  
电话：0531-8289 6855

青岛服务中心  
地址：山东省青岛市李沧区巨峰路177号万达中央公馆1号楼  
1单元1103室  
电话：0532-6770 5669

广州广日电梯工业有限公司福建分公司  
地址：福州市鼓楼区五一中路18号正大广场帝景台1306室  
电话：0591-8788 0521

泉州服务中心  
地址：泉州市丰泽区华大社区润柏大都会7号楼1601

广州广日电梯工业有限公司陕西分公司  
地址：陕西省西安市未央区凤城二路赛高商务港2603室  
电话：029-8523 9773

广州广日电梯工业有限公司青海分公司  
地址：青海省西宁市城西区西川南路76号万达1号写字楼10层11005室  
电话：0971-8455 786

广州广日电梯工业有限公司甘肃分公司  
地址：甘肃省兰州市七里河区建工西路3号金雨大厦1510室  
电话：0931-8476 346

广州广日电梯工业有限公司四川分公司  
地址：四川省成都市二环路东五段9号恒鑫大厦5A  
电话：028-8453 3155 028-8678 4616

南充服务中心  
地址：四川省南充市顺庆区稻香路194号3号  
电话：0817-2246 583

内江服务中心  
地址：四川省自贡市自流井区南湖国际社区11栋1单元25楼147号

广州广日电梯工业有限公司重庆分公司  
地址：重庆市北江区观音桥红鼎国际A座25-10  
电话：023-6707 3068

广州广日电梯工业有限公司海南分公司  
地址：海南省海口市龙华区大同路38号财富中心705室  
电话：0898-3636 9086

三亚服务中心  
地址：海南省三亚市解放路名称假日广场12楼0102室  
电话：0898-8866 9920

广州广日电梯工业有限公司广西分公司  
地址：广西南宁市东葛路29-1荣和中央公园1号楼1315-1318室  
电话：0771-5671 184

广州广日电梯工业有限公司山西分公司  
地址：山西省太原市高新区高新街9号瑞杰科技中心8座312室  
电话：0351-5601 399

广州广日电梯工业有限公司云南分公司  
地址：云南省昆明市西山区绿荫大道明畔中心1001室  
电话：0871-6555 295

贵州服务中心  
地址：贵阳市云岩区北京路银海元隆12栋2单元34楼1号  
电话：0851-2246 583



广州广日电梯工业有限公司  
GUANGZHOU GUANGRI ELEVATOR INDUSTRY CO.,LTD.

# 广日电梯 G·Fre 实用型载货电梯 技术传承 不负重托

GUANGRI G·FRE UTILITY-TYPE FREIGHT ELEVATOR OF  
TECHNOLOGICAL INHERITANCE WITH GREAT TRUST!

广日电梯于1973年开始生产第一台货梯以来，一直以优良的品质和领先的技术赢得了广大客户的认可。G·Fre是结合我司货梯多年实践、改良、优化而来的新一代实用型载货电梯，具有技术成熟、安全稳定、设计裕量大、运输效率高、坚固耐用等优点，可轻松胜任各种高负荷、高频率的货物运输需求。广泛应用于大型物流仓库、商场、酒店、工业园以及交通枢纽等运输场所。

Since the first freight elevator manufactured in 1973, Guangzhou Guangri Elevator Industry Co., Ltd. has been obtaining the recognition of vast majority of customers based on excellent quality and leading technologies. G·Fre is a new generation of utility-type freight elevator improved and optimized based on years of practice in freight elevator, it is featured with mature technology, safety and stability, large design margin, high transport efficiency and solidity and long service life, which make it qualified for high-load, high-frequency freightage demands. Therefore, it is widely used in large-scale logistics warehouse, supermarket, hotel, industrial park, transportation junction and other transportation places.



## 目录 CONTENTS

- 04 安全·可靠  
SAFETY·RELIABILITY
- 08 节能·高效  
ENERGY SAVING  
HIGH EFFICIENCY
- 10 美观·耐用  
BEAUTIFUL DURABLE
- 12 宽敞·实用  
ROOMINESS PRACTICABILITY
- 14 装饰配置  
DECORATION  
CONFIGURATION
- 16 功能介绍  
FUNCTIONAL  
CONFIGURATION
- 18 土建布置  
THE CIVIL LAYOUT
- 21 土建配合  
CIVIL ENGINEERING COORDINATION
- 22 专业信赖 服务全球  
PROFESSIONAL TECHNOLOGY AND  
RELIABLE SERVICE FOR THE  
CUSTOMERS WORLDWIDE

## 安全 · 可靠

### SAFETY · RELIABILITY

#### 最新国家标准（符合国标GB7588-2003 第1号修改单）

- ◆ 完善的轿厢意外移动保护功能方案：配置轿厢意外移动保护装置，可对电梯制动能力进行周期性监控，在层门未被锁住且轿门未关闭的情况下，由于轿厢安全运行所依赖的驱动主机或驱动控制系统的任何单一部件失效引起轿厢离开层站的意外移动，电梯能及时进行有效制动，实时保护人和货物的安全。
- ◆ 高强度层门系统：增加层门强度，采用防脱及增强的门板结构，保证层门的防撞强度达到最新国家安全标准，提升门板防撞强度，可有效抵抗非蓄意的外力撞击。
- ◆ 防止轿门意外开启：设置了开门限制装置，采用更精巧的门锁设计，有效防止轿厢在非平层区时可能的意外开启，有效保护轿内乘客安全。

#### 光幕系统

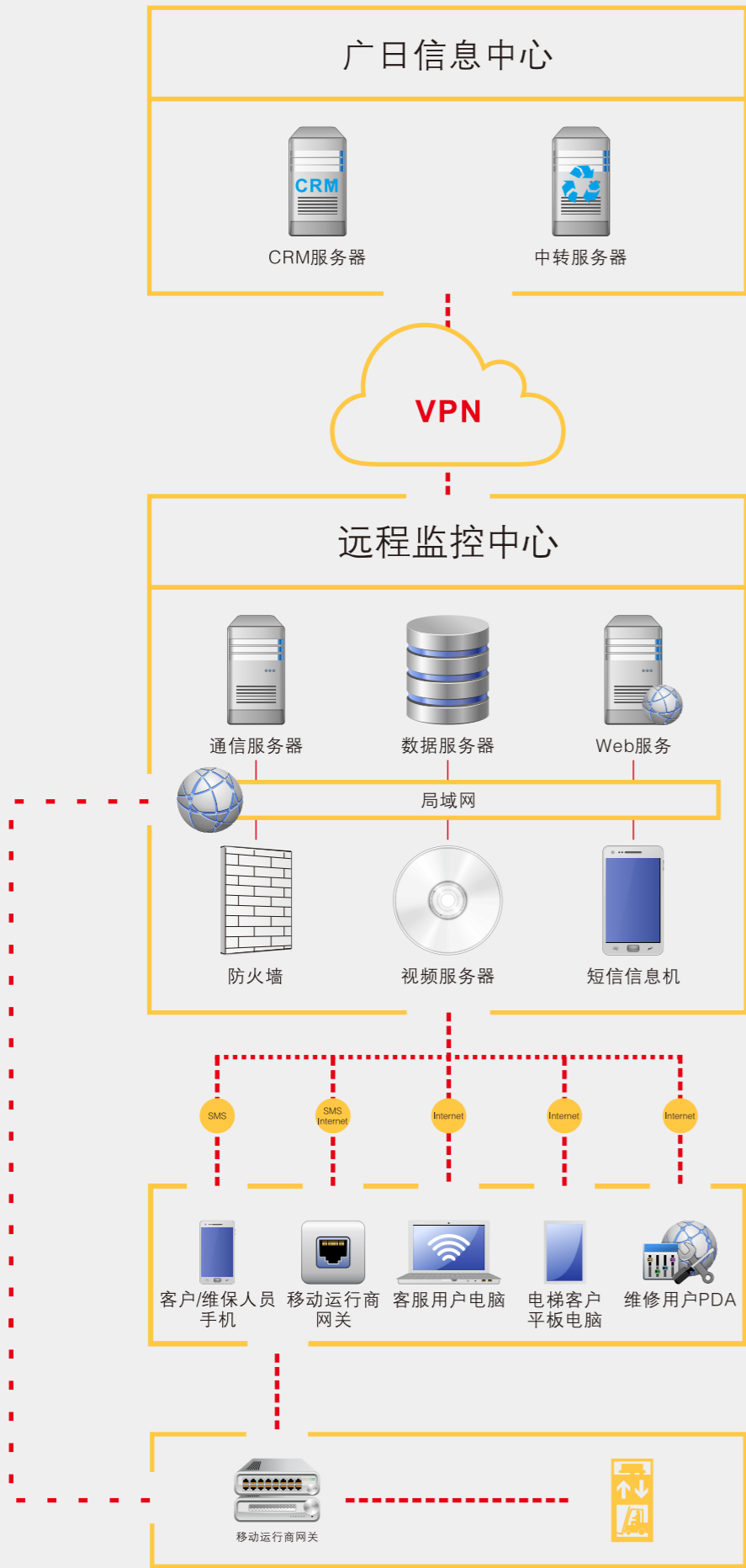
电梯出入口设置了全新静态固定式光幕系统，可灵敏探测电梯门口的出入情况，防止门机意外夹人，货物装载更安全。

#### Latest national standard (in conformity with Amendment 1 of national standard GB7588-2003)

- ◆ Sound unintended car movement protection plan: it is equipped with unintended car movement protection device which can monitor the braking capacity of elevator periodically. When hall door is not locked and car door is not closed and there is unintended car movement (for example, car leaves landing stop) caused by failure of any single part of main driving machine or drive control system for safe operation of car, the elevator can effectively be braked in time to protect the safety of personnel and goods in real time.
- ◆ High-strength hall door system: it can enhance hall door strength and anti-falling and enhanced doorplate are employed, which can ensure that anti-collision strength of hall door reaches latest national safety standard. By enhancing anti-collision strength of door panel, unintentional external force impact can be effectively resisted.
- ◆ Unexpected opening prevention of car door: the elevator is equipped with an opening limiting device with a more delicate door lock design, which can effectively prevent unexpected opening when car door is in non-levelling zone, so as to protect the safety of passengers in car.

#### Multi-beam screen

Exit and entrance of the elevator is provided with brand new stationary multi-beam screen, which can detect the access conditions of elevator entrance in a sensitive way and avoid unexpected personnel clamping. In this way, goods can be loaded in a safer way.



**无线远程监测系统**  
The wireless remote monitoring system



**微机控制系统**

控制系统采用双32位微机及一体化控制技术，全面提升系统响应速度和稳定性，多通道冗余设计，提升电梯安全系数，令电梯运行更安全。

**门系统**

永磁同步门机，采用自主研发永磁同步门系统，安全可靠，系统配合度高，运行稳定，增加环境适应性，降低故障率。

**延时开门**

根据货梯使用的特殊性，我们为G·Fre实用型货梯加入了延时开门功能，轻轻一按便可以长时间开门，方便连续长时间进出货物。

**无线远程监测系统**

远程监控电梯运行、故障和维修数据，利用无线通信模块传输到互联网控制中心，实现监控中心24小时远程监控电梯运行状态，故障信息及时转发至维保人员手机，实现快速服务响应，全天候保障电梯安全运行。

**Microcomputer control system**

The control system employs a double 32-bit microcomputer and integrated control technologies, which can completely improve the response speed and stability of the system. Besides, multichannel redundant design is employed, which can lift the safety factors of elevator and make the elevator safer.

**Door system**

Permanent-magnet synchronous door operator and independently researched and developed permanent-magnet synchronous door system are employed, with the features of safety and reliability, high system cooperation degree and stable operation, which can increase environmental suitability and reduce failure rate.

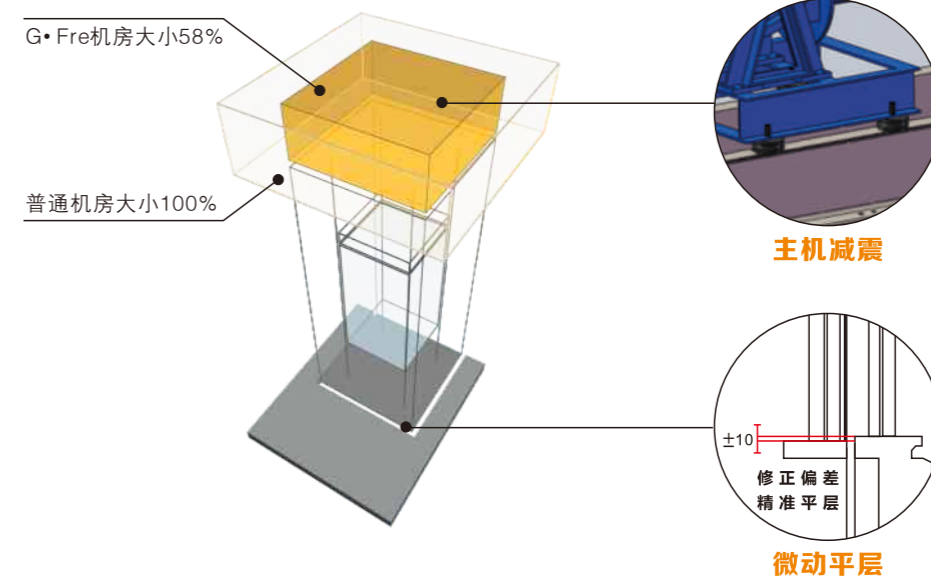
**Delayed opening**

According to the particularity of freight elevator during operation, we added the delayed opening function for G·Fre utility-type freight elevator, which makes the door can be opened for a long time just by pressing one button, so as to continuously load and unload goods for a long time.

**Remote monitoring system is not required**

Operation, failure, maintenance and other remote monitoring data of elevators will be transmitted to the internet control center through wireless communication module, so that the monitoring center is able to monitor the operation status of elevators in the whole day. The fault message will be timely sent to cell-phones of maintenance personnel to let them give a rapid service response and to ensure a safe operation of elevators at any moment.

**节能 · 高效**  
ENERGY SAVING  
HIGH EFFICIENCY



**变频驱动**

高效的VVVF调速系统，起动电流小，运行停止过程平稳，电能使用效率高，比双速电梯节能50%以上，比调压调速（ACVV）电梯节能近30%。

**CAN通讯**

采用双路CAN总线通讯技术，轿厢和外召通讯接口分开，信息传输快速、精准、可靠，抗干扰能力更强。

**小机房设计**

合理的布置方式，减小了机房空间、顶层及底坑空间要求，提高井道利用率及机房的利用率，机房面积仅为普通货梯机房面积的58%。

**微动平层**

标配微动平层功能，当运输重物进出时，自动修正由于重量发生变化时引起的弹性变化，时刻保持轿厢在精准平层位置。

**主机减震**

机房曳引装置均带减震设计，对电梯运行起减震、降噪的效果，电梯运行效果更安静、平稳。

**Variable frequency driving**

High-efficiency VVVF speed-regulating system is employed, with the features of small starting current, stable operation and stop process. Besides, it has a high power efficiency, which can save more than 50% power by comparing with two-speed elevator and save nearly 30% power by comparing with voltage and speed regulating (ACVV) elevator.

**CAN communication**

By employing twin-channel CAN bus communication technology, the car and external calling communication interface is separate, which makes information transmission fast, accurate and reliable and capacity of resisting disturbance is stronger.

**Small machine room design**

The small machine room is reasonably arranged to reduce the requirements for machine room space, headroom and pit and increase the use ratio of hoistway and machine room. Area of machine room is only 58% of that of general freight elevator.

**Inching levelling**

Its standard configuration includes an inching levelling function. When transporting heavy goods, the elevator can automatically correct elasticity change caused by weight changes, to keep the car at an accurate levelling position at any time.

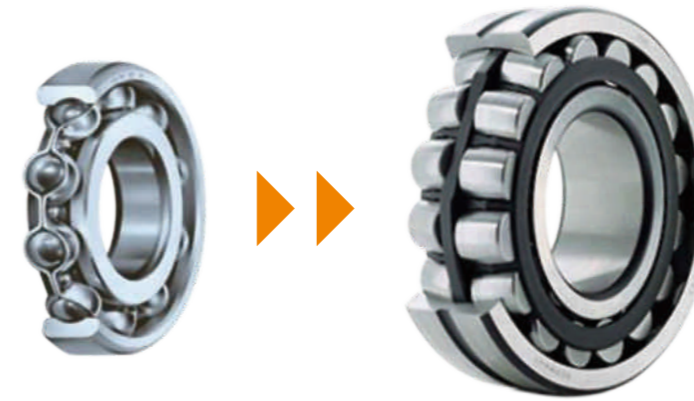
**Main machine damping**

Traction devices in machine room are provided with damping, with effects such as damping and noise reduction during operation of the elevator, which make the elevator operation quieter and more stable.

美观 · 耐用  
AESTHETICS DURABILITY



普通轴承



25倍  
高强度轴承

#### LED照明

G·Fre采用LED照明方案,轿厢、井道采用LED照明,具有节能、低碳、寿命长、显色性好等特点。相同光通量情况下,LED灯能耗更低(比白炽灯节能90%),使用寿命提升,约为普通白炽灯的20倍。

#### 薄形召唤箱

电梯采用薄型外挂式外召,对井道预留要求更低,不需安装回填,土建预留安装孔仅为原预留安装孔面积的3.5%,电梯施工便捷,安装高效。

#### 新型操纵箱

操纵箱采用一体成型超长面板,立体式的外形,运用流线型设计理念,更显非凡气势。

#### 高强度轴承

考虑到货梯的特殊性,货物需频繁进出货梯,对轿厢产生较大的瞬间冲击力,G·Fre轮轴选用45优质碳素结构钢,各导向轮系轴承选用精心核算的调心滚子轴承,可轻松胜任高频率、高强度的货梯运输任务,同轴径情况下使用寿命为深沟球轴承的25倍。

#### 轿厢承载能力强

货梯轿厢轿架通过裕量设计,拥有更高的电梯安全性能,保障电梯长时间安全运行,延长使用寿命。

#### 防腐设计

井道开关防腐、防潮湿,特殊环境适应能力更强,降低故障率,提升安全性能,耐腐蚀性能提升2倍。底坑安全部件开关使用IP67防护等级,防护灰尘吸入,防护短暂浸泡。

#### LED illumination

G·Fre, car and hoistway employ LED illumination plan which has the features such as energy efficiency, low carbon, long service life and excellent color rendering. Under the condition of the same luminous flux, the LED lights have lower energy consumption (energy conservation 90% higher than that of the incandescent light bulb) and longer service life (the service life is about 20 times of that of the incandescent light bulb).

#### Thin type calling box

The elevator is of thin type external-mounting type, with low reserve requirements on hoistway, and no backfill is required during installation. Area of reserved mounting holes of civil engineering is only 3.5% of that of original reserved mounting holes, which makes elevator construction convenient and fast and makes installation efficient.

#### New car operation panel

The car operation panel employs an integrated formed overlength panel, with a vertical appearance and streamlined design concept, which makes its momentum more extraordinary.

#### High-strength bearing

In view of the particularity of elevator, goods are delivered in and out of elevator frequently, which will generate a large instantaneous impact force on car. G·Fre wheel axle employs 45 high-quality carbon structural steel and all guide pulley bearings employ self-aligning roller bearing checked carefully, which make the bearing easily capable of high-frequency and high-strength freight elevator transportation tasks. Under the condition of same axle diameter, service life of the bearing is 25 times of that of deep groove ball bearing.

#### Strong carrying capacity of car

With allowance design, car frame of freight elevator car has a higher safety performance, which can ensure long-time safety operation of elevator and prolong its service life.

#### Anti-corrosion design

Hoistway switch is corrosion resistant and moisture proof, and it has a stronger adaptive capacity in special environment, thus it can reduce failure rate and improve the safety performance of elevator and its corrosion resistance can be improved for 2 times. Protection grade of pit safety part switch is IP67, which can prevent dust and transitory immersion.

## 宽敞 · 实用

ROOMINESS PRACTICABILITY

### 可满足叉车出入

根据货梯的使用特点，我们设计了大空间的轿厢结构，可满足使用载货叉车的要求，并通过采用闭环、脉冲信号控制方式、设置多层减速保护等措施保障货梯运行平稳、平层精准。

### Forklift access

According to the function features of freight elevator, we designed a large-space car structure to meet the demands of using freight forklift and we also ensured the stable operation and accurate levelling by taking protection measures such as closed loop, pulse signal control method and many layers of deceleration protection.



# 装饰配置

## DECORATION CONFIGURATION

### 标准配置

Cabin standard configuration



<b>轿厢型号</b>	◆ CA719L
轿壁	◆ 碳钢喷涂
轿厢高度	◆ 2100
轿顶	◆ CL721L, LED筒灯照明, 大圆风扇, 碳钢喷涂
轿门	◆ 碳钢喷涂
首层层门	◆ 碳钢喷涂
首层门套	◆ 碳钢喷涂小门套
其余层层门	◆ 碳钢喷涂
其余层门套	◆ 碳钢喷涂小门套
门套/轿壁/轿门/层门喷涂颜色	◆ P7604U米白
地板	◆ 花纹钢板 (FL072MT)
地坎	◆ 铝合金
操纵箱	◆ BOP1-SP3 (E)



<b>CAR MODEL</b>	◆ CA719L
Car wall	◆ Coated carbon steel
Car height	◆ 2100mm ;
Car top	◆ CL721L, LED down lamp illumination, large round fan, coated carbon steel
Car door	◆ Coated carbon steel
Landing door of first floor	◆ Coated carbon steel
Door jamb of on first floor	◆ Small door jamb of coated carbon steel
Landing door of other floors	◆ Coated carbon steel
Door jamb of other floors	◆ Small door jamb of coated carbon steel
Spraying color of door jamb/car wall/car door/landing door	◆ P7604U Creamy white
Floor	◆ Checkered steel plate (FL072MT)
Sill	◆ Aluminium alloy
Car operation panel	◆ BOP1-SP3 (E)

### 轿内操纵箱、厅外召唤箱、按钮 (标配)

Car operation panel, Hallcalling box, Button(Standard)



BOP1-SP3(E)



HBI1-SP15

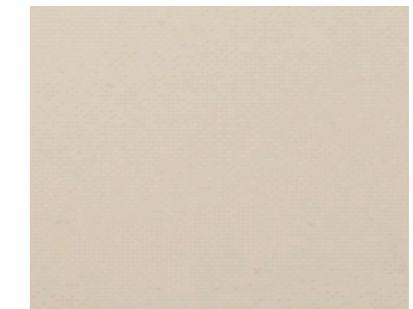


01

### 门套/轿壁/轿门/层门

#### 喷涂颜色 (标配)

Door jamb/Car wall panel/Car door/Color(Standard)



P7604U米白

### 轿内操纵箱、厅外召唤箱、按钮 (选配)

Car operation panel, Hallcalling box, Button(Optional)



BOP1-SP0(E)



HBI1-SP19



31



32

### 门套/轿壁/轿门/层门

#### 喷涂颜色、材质(选配)

Door jamb/Car wall panel/Car door/Color、Material(Optional)



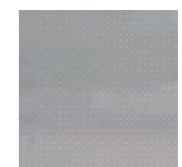
B2123半光米黄



C002皱纹果绿



AC2169浅蓝



不锈钢

# 功能介绍

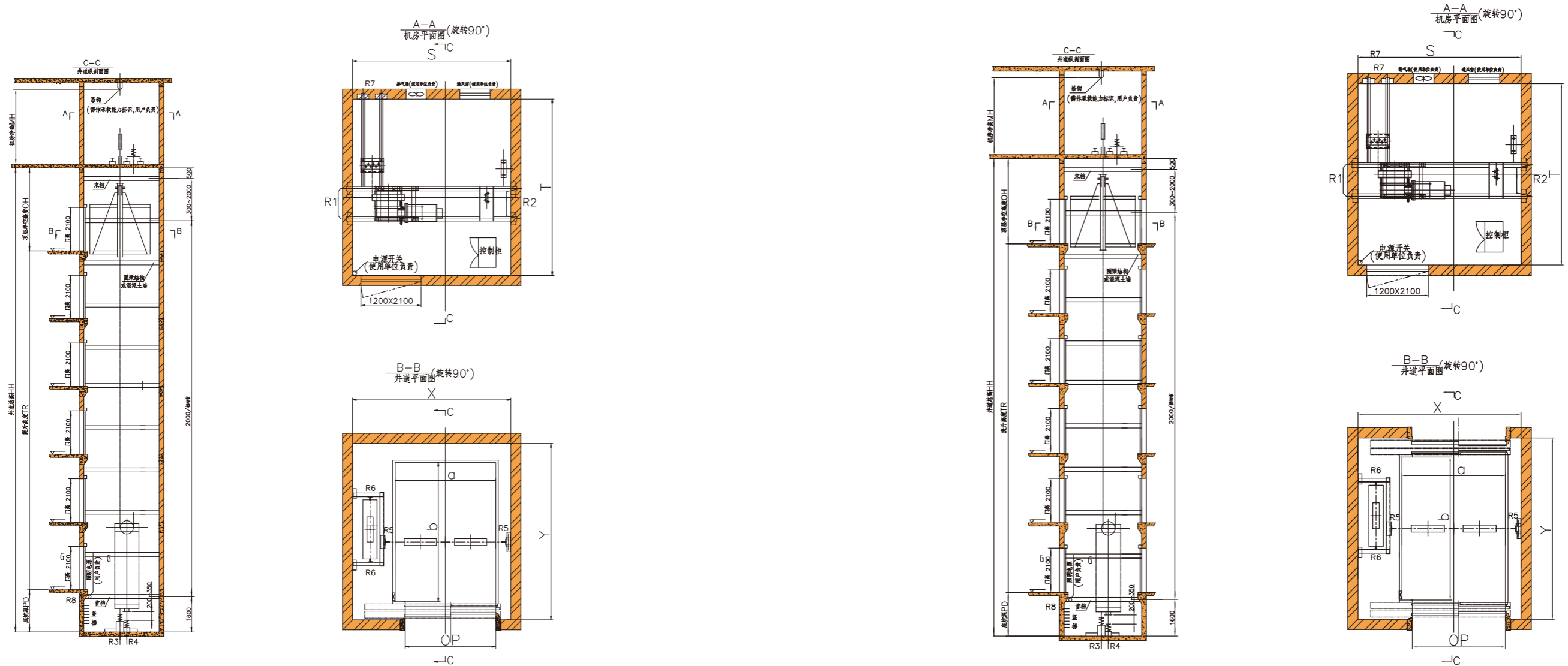
## INTRODUCTION TO FUNCTIONAL

▼	基本功能	Basic Functions
1	安全接触器触点检测保护	Inspection and protection of contacts of safety contactor
2	按钮控制	Press-button control
3	报警按钮	Alarm button
4	变频器多重保护	Multi-protection for frequency converter
5	层楼位置信号的自动修正	Auto correction of position signal of floors
6	超速保护	Overspeed protection
7	超载保护	Overload protection
8	磁角度自学习功能	Magnetic degree self-learning function
9	点阵式楼层显示	Dot-matrix floor displaying
10	电梯自救运行	Self-rescue operation of elevator
11	反向时自动取消指令	Automatic cancelling command when the elevator operates in reverse direction
12	防溜车保护	Sliding prevention protection
13	防门锁短接	Lock short circuit prevention
14	防终端越程保护	Terminal overtravel protection
15	光幕	Light curtain
16	故障历史记录	Failure history
17	故障显示	Failure display
18	故障重开门	Door reopening in case of failure
19	关门按钮提前关门	Advanced door closing before pressing closing button
20	换站停靠	Stop exchange landing
21	火灾应急返回	Fire emergency return
22	集选控制	Collective control
23	检修操作	Maintenance operation
24	轿内延长开门时间	Extended door opening time in car
25	井道层楼数据自学习	Hoistway floor data learning
26	开关门受阻保护装置	Device for blocking protection when opening or closing door
27	开门按钮开门	Door opening by pressing opening button
28	开锁区域外不能开门保护(开锁区域)	Door opening-fault protection beyond unlocking area (locking area)
29	楼层滚动显示	Rolling display of floors
30	满载直驶	Full-load bypass
31	内部通话装置/对讲系统	Internal communication device/intercom system
32	逆向运行保护	Reverse operation protection
33	启动补偿	Starting compensation
34	欠相保护	Under-phase protection
35	欠压保护	Under-voltage protection
36	停电照明功能	Blackout illumination function
37	轿厢意外移动保护	Unintended car movement protection system
38	误指令消除	Error command elimination
39	闲时节电	Power saving in idle hours
40	消防信号反馈	Fire signal feedback
41	永磁同步变频门机(门机)	Permanent magnet and synchronous variable-frequency door operator (door operator)
42	运行超时保护	Operation overtime protection

▼	基本功能	Basic Functions
43	驻停	Parking
44	自动门	Power operated door
45	再平层/微动平层	Relevelling/inching relevelling
▼	选配功能	Optional features
1	安全触板带光幕	Safety edge with light curtain
2	安全触板	Safety edge
3	并联控制运行	Operation under parallel control
4	到站钟	Arrival gong
5	电梯司机操纵	Driver's operation of the elevator
6	独立随行音视频电缆	Independent accompanying audio and video cables
7	防捣乱功能(6层及以上)	Anti-trick function(6 layers or more)
8	非数字字符楼层显示设定	Non-numeric character floor displaying settings
9	双开门	Double door
10	双开门独立控制开关门	Double-opening independent control door
11	停电自救平层	Self-rescue levelling in case of power failure
12	小区监视	Remote monitoring
13	语音报站	Audio stop reporting
14	专用操作	Dedicated operation
15	自动返基站	Automatic home floor returning
16	副操纵盘	Auxiliary control panel
17	物联网	Internet of things
18	模拟视频监控	Analog video supervise
19	数字视频监控	Digital video supervise
说明：“光幕”、“安全触板带光幕”、“安全触板”不能同时选用。 Note: "light curtain", "safety edge with light curtain", "safety edge" should not be selected simultaneously.		

# 土建布置

## THE CIVIL LAYOUT



单开门	额定载重kg Rated capacity	井道尺寸X×Y X x Y Shaft size	轿厢尺寸a×b Size of car	开门尺寸OP×高度 Dimension for door opening Height	机房尺寸S×T Size of machine room	机房支反力kN Machine room reactions			底坑支反力kN Pit reactions				
						R1	R2	R7	R3	R4	R5	R6	R8
	1600	2750 × 2650	1600 × 2100	1500 × 2100	2750 × 2650	71	61	30	148	108	52	42	28
	2000	2750 × 3050	1600 × 2500	1500 × 2100	2750 × 3050	71	61	30	148	108	64	51	34
	3000	3150 × 3300	2000 × 2770	1800 × 2100	3150 × 3300	105	85	35	208	140	95	74	50

型号规格 Specifications	型号 Model	额定载重量kg Rated capacity	开门方式 Open the door way	额定速度m/s Rated speed
G·Fre1600-2S0.5/1.0	G·Fre	1600	旁开双扇	0.5 / 1.0
G·Fre2000-2S0.5/1.0	G·Fre	2000	旁开双扇	0.5 / 1.0
G·Fre3000-2S0.5/1.0	G·Fre	3000	旁开双扇	0.5 / 1.0

注：如果叉车进入轿厢，额定载重量包括叉车的重量。  
Note : If the forklift enters the car, the rated load includes the weight of the forklift

双开门	额定载重kg Rated capacity	井道尺寸X×Y X x Y Shaft size	轿厢尺寸a×b Size of car	开门尺寸OP×高度 Dimension for door opening Height	机房尺寸S×T Size of machine room	机房支反力kN Machine room reactions			底坑支反力kN Pit reactions				
						R1	R2	R7	R3	R4	R5	R6	R8
	1600	2750 × 2840	1600 × 2100	1500 × 2100	2750 × 2840	71	61	30	148	108	52	42	28
	2000	2750 × 3240	1600 × 2500	1500 × 2100	2750 × 3240	71	61	30	148	108	64	51	34
	3000	3150 × 3510	2000 × 2770	1800 × 2100	3150 × 3510	105	85	35	220	160	95	74	50

额定速度m/s Rated speed	最大提升高度m Max.lifting height	开通消防服务功能时 消防通道层到端站最大距离 Maximum distance TR from fire-fighting service channel floor to the end stop	最大停站数 Macimum number of stops	最小顶层高度mm Minimum overhead		最小机房高度mm Minimum height of the machineroom	最小层间距离mm Minimum distance between floors	最小坑深度mm Minimum depth of pit
				轿厢净空2100mm Car clearance 2100 mm	轿厢净空2200mm Car clearance 2200 mm			
0.5	28	28	9	4200	4300	2500	门高+700	1500
1.0	55	55	16	4200	4300	2500	门高+700	1500

注：门净高2100mm最小层间距离2800mm,小于此值时需向我司咨询。

Note : The door is 2100mm the minimum interlayer distance of 2800mm, less than this value is required to consult our

# 土建配合

## 甲方负责土建事项说明

### 一、注意事项：

- 1.本表中尺寸只适用于标准技术规格，其他技术规格要求尺寸请咨询我司。
- 2.本表中所示的井道尺寸为完成底坑防水工作后的最小尺寸，不包括井道垂直偏差，井道垂直偏差具体见土建技术要求。
- 3.井道四壁为 $\geq 200\text{mm}$ 混凝土墙或 $\geq 240\text{mm}$ 圈梁砖墙，不允许采用空心砖砌筑。
- 4.井道原则上不要设置紧邻起居室或对声音敏感区域。如实际情况不能达到本规定，则用户应作好相关隔音减震措施。
- 5.电梯井道原则上不要设置在人们能到达的空间上面。如实际情况不能达到本规定，请与我司联络。
- 6.如电梯井道为钢结构，请尽早与我司联络。
- 7.若是对重设置安全钳，井道尺寸要求将会增加。
- 8.当选用防火门时，井道尺寸要求将会增加。

### 二、电梯土建应满足的工作环境要求：

- 1.机房内的空气温度应保持在 $+5\sim+40^{\circ}\text{C}$ 之间。
- 2.运行地点的空气相对湿度在最高温度为 $+40^{\circ}\text{C}$ 时不超过50%，在较低温度下可有较高的相对湿度，最湿月的月平均最低温度不超过 $+25^{\circ}\text{C}$ ，该月的月平均最大相对湿度不超过90%。若可能在电器设备上产生凝露，应采取相应措施。
- 3.供电形式为三相五线制，独立地线，电压相对于额定电压的波动应在 $\pm 7\%$ 范围内，电梯启动时电压降在10%以内。
- 4.环境空气中不应含有腐蚀性和易燃性气体，污染等级不应大于GB 14048.1-2006规定的3级。

### 三、建筑物业主或总承办商负责的工作：

- 1.建造电梯井道，并配备相关照明、通风及防水设备。
- 2.根据要求预留孔或打孔，及其后进行修补。
- 3.根据要求设置承重吊钩和标示吊钩最大承重值。
- 4.当电梯井道尺寸过大超过规格尺寸，需要设独立隔梁；或同一井道安装两台及以上电梯，需要设中间梁。
- 5.井道内或机房的隔音。
- 6.如果中间有多层不停层，需在井道适当地方设置紧急出口。
- 7.安排配电箱和照明电线以及到电气房的电源。
- 8.在电梯施工期间提供一个适当的、可上锁的地方，以便存放电梯设备和工具。
- 9.免费提供适量的水泥和混凝土用于负责捣制踏板、搁机梁墩及缓冲墩座，封堵每层门洞。
- 10.电梯安装完毕后，完成电梯候梯厅四周的墙及地板的整修。
- 11.完成所有其他建筑物相关的承建工作。

## CIVIL ENGINEERING COORDINATION

Party A shall be responsible for the statement of civil engineering matters.

### Attention

- 1.The dimensions in this table are only applicable to the standard specifications, for other required specification sizes, please contact us.
- 2.Shaft dimensions in Parameter Table are minimal requirement after water-proof process in pit, but not included vertical deviation in shaft. For vertical deviation in shaft, please refer to technical requirement of civil works.
- 3.Shaft walls should be 200mm concrete walls or 240mm brick walls, hollow brick is prohibited.
- 4.Shaft close to living room or sound-sensitive area is not recommended; otherwise proper sound proof solution should be adopted by user.
- 5.Shaft over accessible area is not recommended, being that case please consult with our overseas department
- 6.If the shaft is steel construction, please consult with our overseas department.
- 7.If safety clamps is adopted on counterweight, shaft dimensions requirement shall be extended.
- 8.If fire-proof door is adopted, shaft dimensions requirement shall be extended.

### Working environment for civil work

- 1.Temperature in machine room should be around  $+5\sim+40^{\circ}\text{C}$ .
- 2.Relative humidity in running site should not be over 50% at highest temperature  $+40^{\circ}\text{C}$ . Higher relative humidity is allowed in lower temperature, in most humid month average lowest temperature should not be over  $+25^{\circ}\text{C}$ , average highest relative humidity should not be over 90%. Proper measures should be adopted to cope with possible condensation on electric equipment.
- 3.The Power Source should be in 3 Phases, 5 lines. Voltage fluctuation of power supply voltage should be within the tolerance of  $\pm 7\%$  of rated voltage.
- 4.Erosive and flammable gases in air is prohibited, pollution level should exceed level 3 according code GB 14048.1-2006.

### Responsibilities for property owner or contractor

- 1.Shaft building and provision of associated equipments of lighting, ventilation and water-proofing.
- 2.Hole drilling on request and afterward patching /filling.
- 3.Lifting hook installation on request.
- 4.If the shaft dimension is larger than standard excessively, independent isolating beam needs to be set up; If more than 1 elevator will be installed in one shaft, intermediate beam should be needed.
- 5.Sound-proof work in shaft and machine room.
- 6.Emergency exit in shaft will be needed when vertical distance between two landing door is too long (11 meters).
- 7.Power distribution box, lighting wires, power supply to electric equipment room.
- 8.Provision of suitable and lockable storeroom for elevator equipment and tools during elevator installation.
- 9.Provision of cement and concrete for step, base casting and cave filling. After installation, complete the renovations of walls and floors of the landing hall.
- 10.Walls and floor finishing restoration in waiting hall after installation.
- 11.Other necessary construction work.

# 专业信赖 服务全球

## PROFESSIONAL TECHNOLOGY AND RELIABLE SERVICE FOR THE CUSTOMERS WORLDWIDE

广日电梯始终坚持“服务创造价值”的理念，在全球范围建立完善的工程服务网络和工作管理体系，为客户提供安装、维修、保养、工程改造、咨询、培训等一体化的专业服务，致力为客户提供高效、优质、专业的阳光暖心服务。

Always insisting on the idea of “services create values”, Guangri Elevator has established a complete engineering service network and work management system in the global to provide integrative and professional services of installation, repair, maintenance, reconstruction, consultation, training etc., devoting to provide efficient, qualified, professional and warm services to our customers.



全球服务网络  
GLOBAL SERVICE NETWORK



### 专业团队 PROFESSIONAL TEAM



拥有经验丰富的工程专业团队，响应客户从运输安装到调试维护的全过程需求，专业服务，值得信赖！

Rich experiences of our professional engineering team enable them to respond to needs of customers for the whole process from transportation and installation to debugging and maintenance. Our professional services worth your trust!

### 远程监控 REMOTE MONITORING



与物业联网遥监，自动监控分析电梯的运行状况，时刻为电梯的安全保驾护航，同时实现电梯的远程维护和技术支持。

Networking with the property management company for remote monitoring realizes automatic monitoring and analysis on elevator operation conditions so to secure elevator operation all the time and enables remote maintenance and technical support.

### 全天响应 24H RESPONSE



客户服务中心24小时全天候运作，快速有效处理客户诉求。

Our customer service center operates 24 hours per day to quickly and efficiently handle customers' complaints.

### 配件中心 ACCESSORY CENTER



在全方位覆盖的工程服务网络终端建立备件库，保障电梯维修保养所需配件的最及时供应。

Spare parts warehouses for accessories are established at our engineering service network terminals for in-time supply of accessories in case of repair and maintenance of elevator.