

# 全国服务热线 Hotline in China 400-8866-130

www.guangri.com.cn



欢迎关注广日电梯官方微信

## 总部 The Headquarters

广州广日电梯工业有限公司

地址：广州市番禺区石楼镇国贸大道南636号  
ADD: 636 South of GuoMao Road Shilou County  
Panyu District, Guangzhou

电话(Tel): +86-20-3922 1188  
传真(Fax): +86-20-3922 1155

## 营工中心 Sales and Engineering Headquarters

地址：广州市天河区科新路2号  
ADD: No.2 of Kexin Road TianHe District, Guangzhou  
电话(Tel): +86-20-8770 5706  
传真(Fax): +86-20-8779 2613

## 进出口口 Import & Export

电邮(E-mail): export-dept@guangri.com.cn  
电话(Tel): +86-20-8770 5706  
传真(Fax): +86-20-8779 2613

## 驻外营销公司 Distribution Company out of Guangzhou

广州广日电梯工程服务有限公司  
地址：广东省广州市天河区天河路238号华龙大厦6楼  
电话：020-3113 1008

深圳市广日电梯维修服务有限公司  
地址：深圳市福田区八卦一路鹏益花园3栋1903室  
电话：0755-2584 9770

珠海市广日电梯工程服务有限公司  
地址：广东省珠海市吉大石花东路58号华景花园23栋地下  
电话：0756-3355 801

佛山广日电梯工程服务有限公司  
地址：广东省佛山市汾江中路大观街4号  
电话：0757-8224 3455

粤西服务中心  
地址：广东省湛江市霞山区人民大道南34号湛江大厦905室  
电话：0759-2221 620

广州广日电梯工业有限公司汕头分公司  
地址：广东省汕头市龙湖区长江路23号新一城商业中心2幢1604-1607号  
电话：0754-8992 3004 / 87263 404

梅州服务中心  
地址：广东省梅州市梅江区彬芳大道88号新金雁大酒店2楼  
电话：0753-2262 007

广州广日电梯工业有限公司清远分公司  
地址：广东省清远市清城区人民一路8号东骏豪庭4号楼1503  
电话：0763-3787 100

广州广日电梯工业有限公司惠州分公司  
地址：广东省惠州市江北文明一路9号富绅大厦809-810室  
电话：0752-2203 161

东莞服务中心  
地址：广东省东莞市莞城区东纵路地王广场商务中心603室  
电话：0769-2223 8516

广州广日电梯工业有限公司湖南分公司  
地址：湖南省长沙市雨花区韶山中路419号凯宾商业广场南塔1705-1708室  
电话：0731-8990 7817 / 8579 2218

株洲服务中心  
地址：湖南省株洲市天元区奥园广场一期1栋2单元1208室  
电话：0731-2828 2921

衡阳服务中心  
地址：湖南省衡阳市蒸湘区白云路66号君馨名邸5号楼1204室  
电话：0734-8333 034

常德服务中心  
地址：湖南省常德市武陵区滨湖路万业城单元604室  
电话：0736-7178 996

吉首服务中心  
地址：湖南省吉首市乾州新城世纪山水12栋104  
电话：0743-8711 658

广州广日电梯工业有限公司河南分公司  
地址：河南省郑州市郑东新区商务内环11号楼金成东方国际1301室  
电话：0371-5567 8625

漯河服务中心  
地址：河南省漯河市郾城区海河路与舟山路交叉口向东50米

广州广日电梯工业有限公司北京分公司  
地址：北京市石景山区八大处路49号点石商务公园1号楼1007、1008室  
电话：010-8878 5366

内蒙古服务中心  
地址：内蒙古包头市青山区青年路万达广场8号楼3单元405  
电话：0472-5245 033

广州广日电梯工业有限公司天津分公司  
地址：天津市河西区紫竹林道与紫金山路交口新世纪城15-4-601室  
电话：010-5263 8621

广州广日电梯工业有限公司河北分公司  
地址：河北省石家庄市裕华区槐安东路152号金源商务广场018幢2-501  
电话：0311-8529 1800

广州广日电梯工业有限公司湖北分公司  
地址：湖北省武汉市江汉区中央商务区泛海国际SOHO城4号楼18层1号  
电话：027-6566 2839

襄阳服务中心  
地址：湖北省襄阳市樊城区松鹤路乔营小区31栋3单元6楼  
电话：027-6566 2839

广州广日电梯工业有限公司辽宁分公司  
地址：辽宁省沈阳市苏家屯区南京南街1208号奥园国际城99号楼1301  
电话：024-3153 3809

吉林服务中心  
地址：吉林省长春市南关区吉顺街与解放大路交汇 长春国际商务中心  
B-一区1202室  
电话：0431-8173 8126

广州广日电梯工业有限公司黑龙江分公司  
地址：黑龙江省哈尔滨市道里区群力大道星光耀广场（一期）办公  
2号楼2212室  
电话：0451-8480 7630

广州广日电梯工业有限公司江苏分公司  
地址：江苏省南京市汉中路185号鸿运大厦9楼  
电话：025-5225 8710

广州广日电梯工业有限公司南通分公司  
地址：江苏省南通市港闸区金海岸广场1幢1610  
电话：0513-5588 0474

广州广日电梯工业有限公司徐州分公司  
地址：江苏省徐州市泉山区西安北路6号恒茂大厦2706室  
电话：0516-8558 1557

广州广日电梯工业有限公司上海分公司  
地址：上海市杨浦区国霞路458弄15号301室  
电话：021-3362 6178

广州广日电梯工业有限公司杭州分公司  
地址：浙江省杭州市下城区瑞银街108号1幢416室  
电话：0571-8693 3827

广州广日电梯工业有限公司江西分公司  
地址：江西省南昌市高新区京东大道177号群辉大厦606室  
电话：0791-8855 0015

江西莱菱电梯工程有限公司  
地址：江西省南昌市青山湖区洛阳路现代庄园90号  
电话：0791-8815 3437

广州广日电梯工业有限公司安徽分公司  
地址：安徽省合肥市政务区祁门路333号新地中心C座1804室  
电话：0551-6264 8265

蚌埠服务中心  
地址：安徽省蚌埠市蚌山区新地城市广场6栋2单元701室  
电话：0552-3075 880

广州广日电梯工业有限公司山东分公司  
地址：山东省济南市高新区舜华路2000号舜泰广场9号楼北楼705A  
电话：0531-8289 6855

青岛服务中心  
地址：山东省青岛市李沧区巨峰路177号万达中央公馆1号楼  
1单元1103室  
电话：0532-6770 5669

广州广日电梯工业有限公司福建分公司  
地址：福州市鼓楼区五一中路18号正大广场帝景台1306室  
电话：0591-8788 0521

泉州服务中心  
地址：泉州市丰泽区华大社区润柏大都会7号楼1601

广州广日电梯工业有限公司陕西分公司  
地址：陕西省西安市未央区凤城二路赛高商务港2603室  
电话：029-8523 9773

广州广日电梯工业有限公司青海分公司  
地址：青海省西宁市城西西川南路76号万达1号写字楼10层11005室  
电话：0971-8455 786

广州广日电梯工业有限公司甘肃分公司  
地址：甘肃省兰州市七里河区建工西街3号金雨大厦1510室  
电话：0931-8476 346

广州广日电梯工业有限公司四川分公司  
地址：四川省成都市二环路东五段9号恒鑫大厦5A  
电话：028-8453 3155 028-8678 4616

南充服务中心  
地址：四川省南充市顺庆区稻香路194号3号  
电话：0817-2246 583

内江服务中心  
地址：四川省自贡市自流井区南湖国际社区11栋1单元25楼147号

广州广日电梯工业有限公司重庆分公司  
地址：重庆市北江区观音桥红鼎国际A座25-10  
电话：023-6707 3068

广州广日电梯工业有限公司海南分公司  
地址：海南省海口市龙华区大同路38号财富中心705室  
电话：0898-3636 9086

三亚服务中心  
地址：海南省三亚市解放路名称假日广场12楼0102室  
电话：0898-8866 9920

广州广日电梯工业有限公司广西分公司  
地址：广西南宁市东葛路29-1荣和中央公园1号楼1315-1318室  
电话：0771-5671 184

广州广日电梯工业有限公司山西分公司  
地址：山西省太原市高新区高新街9号瑞杰科技中心8座312室  
电话：0351-5601 399

广州广日电梯工业有限公司云南分公司  
地址：云南省昆明市西山区绿荫大道明畔中心1001室  
电话：0871-6555 295

贵州服务中心  
地址：贵阳市云岩区北京路银海元隆12栋2单元34楼1号  
电话：0851-2246 583



# Green Max<sup>®</sup> 系列 MAX-E 小机房乘客电梯 Passenger Elevator with Mini-machine room



广州广日电梯工业有限公司  
GUANGZHOU GUANGRI ELEVATOR INDUSTRY CO.,LTD.

# 承载卓越 智能典范

## A MODEL OF SUPERIOR INTELLIGENCE



GreenMax-E小机房乘客电梯是广日电梯GreenMax小机房永磁同步无齿曳引电梯系列产品，它继承了GreenMax电梯的优秀血统，严格按照国家最新安全标准进行设计、制造，在质量稳定、安全可靠的基础上利用最新电梯节能技术最大幅度的降低能耗，是建筑节能的最佳选择。

The GreenMax-E small machine room passenger elevator is one of the series products of the permanent magnet and synchronous gearless traction type small room machine elevators that are manufactured by Guangzhou Guangri Elevator Industry Co., Ltd. It inherits the excellences of the GreenMax elevator and it is designed and manufactured in strict accordance with the latest national safety standard. Except for its stable quality as well as safe and reliable performance, it is also provided with the latest energy-saving technology that can help reduce the energy consumption to the largest extent. Therefore, the small machine room passenger elevator is an optimal option for building energy efficiency.

## 目录

### CONTENTS

- 02** 承载卓越 智能典范  
A MODEL OF SUPERIOR INTELLIGENCE
- 04** 核心科技  
CORE TECHNOLOGY
- 06** 节能环保  
ENERGY CONSERVATION AND ENVIRONMENTAL PROTECTION
- 08** 安全升级  
SECURITY UPGRADE
- 10** 装饰选型  
DECORATION TYPE SELECTION
- 28** 功能介绍  
INTRODUCTION TO FUNCTIONS
- 30** 土建布置  
ARRANGEMENT OF CIVIL WORKS
- 36** 土建配合  
CIVIL ENGINEERING COORDINATION
- 38** 专业信赖 服务全球  
PROFESSIONAL TECHNOLOGY AND RELIABLE SERVICE FOR THE CUSTOMERS WORLDWIDE

# 核心科技

## CORE TECHNOLOGY

修正偏差  
精准平层

### 永磁同步技术

GreenMax-E利用当今电梯最先进的控制技术和驱动技术，提高运行效率，最大程度降低电梯能耗，进一步降低电梯的维护成本。

采用新一代国际领先的永磁同步无齿轮主机驱动，大大提高系统效率，与传统电梯驱动主机比效率提高30%以上。

采用永磁同步变频门机技术，高性能32位工业级微机处理器，精度高。

使用先进的矢量控制算法，在实现电梯节能的同时使开关门速度曲线的高效平滑，开关门平稳、噪音低。

### 微机控制技术

采用32位微机一体化控制技术，双CPU中央处理器，配合精准的空间矢量控制器，使控制器与驱动主机之间实现完全闭环矢量控制，全面提高系统的响应速度与可靠性，提高电梯系统的运行效率。

### 变频技术

变频器使用空间矢量算法，实现速度、电流、磁链三闭环控制，自动计算电梯最佳运行的速度曲线，使电梯起动、运行、制动平稳。

对电源的电压和频率进行无级调速，起动电流小，电能使用效率高，比普通异步主机系统能耗节约高达50%以上。

#### Permanent magnet and synchronous technology

GreenMax-E adopts the most advanced control technology and driving technology for elevators at present, which has improved the operation efficiency, lowered the energy consumption to the largest extent and further reduced the maintenance cost for elevators.

It is provided with a new generation of internationally advanced permanent magnet and synchronous gearless traction machine, which has increased the system efficiency by over 30% compared with the traction machine of the traditional elevator.

Besides, it is also provided with the permanent magnet and synchronous frequency conversion gate operator technology as well as a high-performance 32-bit industrial microcomputer processor, which makes it more precise.

The advanced vector control algorithm adopted by it makes the elevator not only energy-saving but also have a highly efficient and smooth operation curve while opening and closing. As a result, it is stable with low noise when opening and closing.

#### Microcomputer control technology

It is provided with the 32-bit microcomputer integrated control technology, a double CPU central processor and complete with an accurate space vector controller, which has realized a complete closed loop vector control between the controller and the traction machine, improved the response speed and reliability of the system in an overall way as well as enhanced the operation efficiency of the elevator system.

#### Variable frequency technology

The frequency converter uses the space vector algorithm to realize closed-loop control on speed, current and flux linkage and to automatically calculate the optimal operation speed curve of the elevator in order to maintain stable starting, operation and braking of the elevator.

It can also realize step-less speed regulation for the voltage and frequency of the power supply, which keeps it low in elevator starting and high in energy efficiency. It can save more than 50% of energy compared with the ordinary asynchronous main machine system.

### 安全保障技术

制动器采用直接制动曳引轮方式，制动力超冗余设计，保证电梯可靠制停或静止。

完善的安全保护措施，能够在运行出现故障时对电梯进行实时保护，具有对故障准确记录并分析故障原因的功能。

应用行业内最先进直接停靠技术和无传感器负载自动补偿技术，使电梯停层准确、乘坐舒适、运行平稳。

采用can总线通讯技术，保证电梯信息传输的高可靠性和精确性，有效防止误动作。

配置滚动导靴，运行平稳，耐磨，提升搭乘舒适度（2.5m/s配置）。

### 小机房设计

小机房设计，仅为传统机房面积的60%，机房高度也相应降低，节省土建投入。

### 微动平层

配置再平层功能，当乘客进出时，精确修正钢丝绳弹性引起的平层位置偏差，时刻保持轿厢在精准平层位置（提升高度 $\geq 60$ 米）。

#### Safety guarantee technology

The brake is provided with a direct braking traction sheave and a hyper-redundancy design for braking force in order to guarantee reliable stopping or motionlessness of the elevator.

A complete set of safety protection measures can provide the elevator with real-time protection when fault occurs during operation. Besides, these measures can also help accurately record the fault and analyze the cause of the fault.

It is provided with the most advanced direct-stopping technology and sensor-less load auto-compensation technology in the industrial that makes the elevator has an accurate stopping performance, comfortable environment and stable operation.

The CAN bus communication technology adopted by it can guarantee high reliability and accuracy on information transmission as well as prevent malfunction.

The rolling guide shoe equipped to it operates stably, has a wear-resisting performance and increases the comfort when people are taking the elevator (2.5m/s configuration).

#### Small machine room design

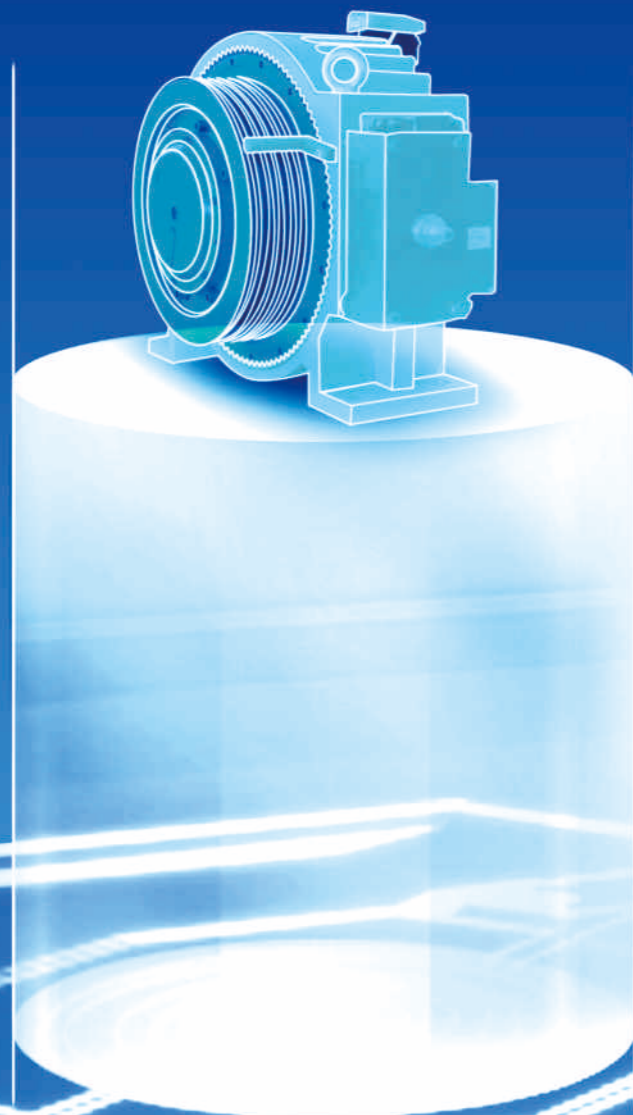
The small machine room takes only 60% of the area of the traditional machine room. Besides, the height of the machine room is also lowered. As a result, the cost on civil engineering and construction has been reduced.

#### Inching levelling

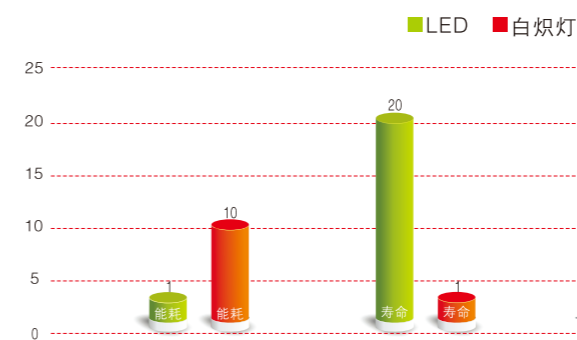
It has a relevelling function that can help correct the levelling position deviation caused by the elasticity of the steel wire in an accurate way when passengers are getting in and out of the car. This function is used to keep the car at an accurate levelling position all the time (lifting height  $> 60$ m).

# 节能环保

ENERGY CONSERVATION  
AND ENVIRONMENTAL  
PROTECTION



## LED照明优势



## 国家A级能耗



### 绿色洁净

采用无齿轮曳引机后主机无需液态润滑油，消除传统传动引起的噪音和振动，减少油污染，达到低噪音，使环境更加洁净。先进的VVVF一体化控制系统取代传统驱动与控制连接方式，消除连线间强电所产生的电磁辐射，减少电磁污染，确保乘客的健康，凸显人性化关怀。全LED配置，绿色照明光照，不含铅、汞，环保落实到细微之处。

### 高效节能

GreenMax-E利用当今电梯最先进的控制技术和驱动技术，提高运行效率，最大程度降低电梯能耗，进一步节省电梯的维护成本，电梯整梯能效指标通过国家A级能耗测试。相同光通量情况下，LED灯能耗更低（比白炽灯节能90%），光效高、寿命长，使用寿命约为普通白炽灯的20倍。

### Green clean

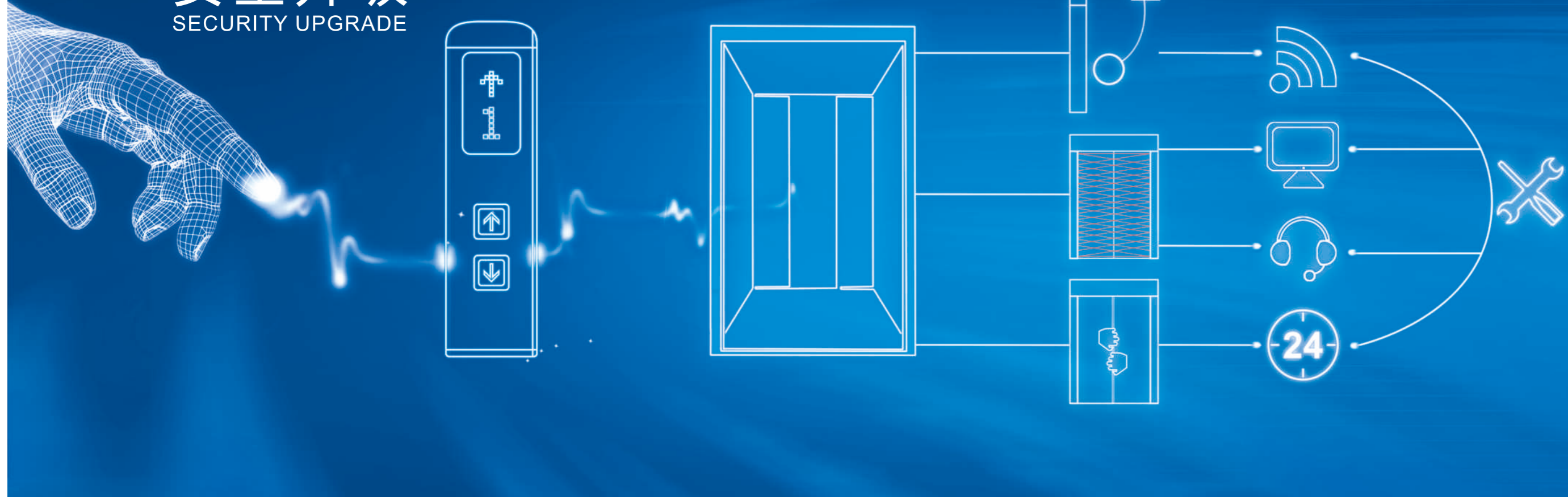
It is provided with a gearless traction machine which requires no liquid lubricant, thus helps eliminate the noise and vibration caused by traditional driving, reduces oil pollution, makes the noise lower and keeps a cleaner environment. The advanced VVVF integrated control system which has replaced the traditional driving and control connection mode eliminates electromagnetic radiation generated by strong current at the connection part, reduces electromagnetic pollution and guarantee the health of passengers. The elevator is complete with green LED lights. These LED lights do not have any lead or mercury, which have fully realized the true essence of energy saving and environmental protection.

### Energy-efficient

GreenMax-E adopts the most advanced control technology and driving technology for elevators at present, which has improved the operation efficiency, lowered the energy consumption to the largest extent and further reduced the maintenance cost for elevators. Besides, the energy efficiency index of the entire elevator has passed the national Class-A energy consumption test. Under the condition of the same luminous flux, the LED lights have lower energy consumption (energy conservation 90% higher than that of the incandescent light bulb), higher lighting effect and longer service life (the service life is about 20 times of that of the incandescent light bulb).

# 安全升级

## SECURITY UPGRADE



安全防护升级

自动检测，24小时监控

### 最新国家标准（符合国标GB7588-2003 第1号修改单）

- ◆ 完善的轿厢意外移动（UCMP）保护功能方案：配置轿厢意外移动保护（UCMP）装置，可对电梯制动能力进行周期性监控，当电梯轿厢出现意外移动时，能触发UCMP保护，及时进行有效制动，实时提供安全保护。
- ◆ 高强度层门系统：采用防脱及增强的门板结构，保证层门的防撞强度达到最新国家安全标准，可有效抵抗非蓄意的外力撞击。
- ◆ 防止轿门意外开启：设置开门限制装置，有效防止轿厢在非平层区时可能的意外开启，有效保护轿内乘客安全。

### 光幕系统

全新静态固定式光幕系统，电梯出入口设置了固定光幕，可灵敏探测电梯门口的出入情况，实现无盲区监测，乘客进出更安全。

### Latest national standard (in conformity with Amendment 1 of national standard GB7588-2003)

- ◆ Sound unintended car movement protection (UCMP) plan: it is equipped with unintended car movement protection device (UCMP) which can monitor the braking capacity of elevator periodically. When the elevator car moves accidentally, UCMP safety device can be activated to carry out effective brake timely, providing real-time safety protection.
- ◆ High-strength hall door system: it can enhance hall door strength and anti-falling and enhanced door plate are employed, which can ensure that anti-collision strength of hall door reaches latest national safety standard and resist unintentional external force impact.
- ◆ Unexpected opening prevention of car door: the elevator is equipped with an opening limiting device which can effectively prevent unexpected opening when car door is in non-levelling zone, so as to protect the safety of passengers in car.

### Light curtain system

Brand new static and fixed light curtain system: Fixed light curtain is set at the inlet and outlet of elevator, which can detect sensitively the conditions at the inlet and outlet of elevator, so as to achieve dead-zone-free monitoring and passengers can get in and out of the elevator more safely.

### 自动检测系统

制动力自动检测系统，实时监控制动器动作状态，提前预警系统制动力，保证电梯安全运行。

### 防护配置升级

采用IP67等级开关，配置升级，具有具有防尘、防浸等功能，提升稳定性。

### 无线远程监测系统

远程监控电梯运行、故障和维修数据，利用GPRS模块传输到互联控制中心，实现监控中心24小时远程监控电梯运行状态，全天候保障电梯安全运行。

### Automatic detecting system

Braking force automatic detecting system can monitor the action state of brake in real time and alarm system braking force in advance, so as to ensure safe operation of elevator.

### Protective equipment upgrade

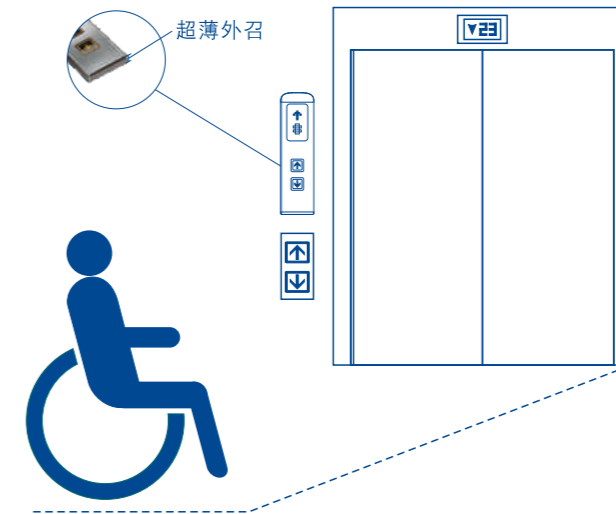
Ip67 switch is employed to upgrade equipment. Upgraded equipment has dust-proof and water-proof functions, which can improve its stability.

### Wireless remote monitoring system

Elevator operation, fault and maintenance data is monitored remotely and transferred to interconnected control center through GPRS module, and then monitoring center can achieve 24-hour remote monitoring of operating state of elevator and all-weather guarantee of safe operation of elevator.

# 装饰选型

DECORATION TYPE SELECTION



## 轿厢装饰

轿厢壁板颜色搭配设计，双层吸顶灯配置，明亮清新的轿厢设计使乘客拥有更舒适乘坐体验。超宽、超深轿厢尺寸可供选择（可容纳担架），充分满足生活家居运输和紧急情况的需求。

## 人机互动升级

操纵箱采用一体式成型超长面板，符合美学审美的流线型、立体式外形设计，更显非凡气势。超薄壁挂式外召，设计美观，安装便捷。

## 无障碍设计

GreenMax-E将无障碍理念导入电梯制造标准中，体现广日关注、注重特殊群体的需求，为老人、残障人士提供更便捷的使用环境，致力打造无障碍化的城市建筑垂直交通工具。

### Decoration of car

The color of car enclosure panel is designed in a matching way. Double-deck ceiling lamp is equipped. The car is designed to be bright and fresh, which can make passengers feel more comfortable. Car with super wide and deep size can be provided (which can accommodate the stretcher), which can fully satisfy the need of home contents transportation and emergency circumstances.

### Man-machine interaction upgrade

Integrated formed overlength panel is employed for car operation panel, which is in conformity with streamline and three-dimensional aesthetic appearance design and it looks more extraordinary. It is of ultra-thin wall-mounted type with features of beautiful design and easy installation.

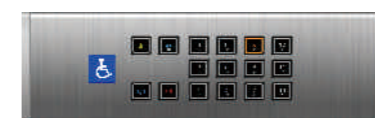
### Barrier-free design

GreenMax-E takes barrier-free idea into elevator manufacturing standards, which incarnates that Guangri pays attention to the needs of special groups, provides more convenient service environment for the elder and the disabled and aims at making barrier-free vertical transportation means in urban buildings.

### ★ 无障碍功能包 ★

- 残疾人操纵盘
- 后壁中间镜面不锈钢
- 轿内延长开门时间
- 无障碍呼梯盒
- 语音提示

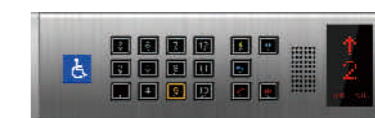
### ★ 有偿选配



### ★ Barrier-Free Features ★

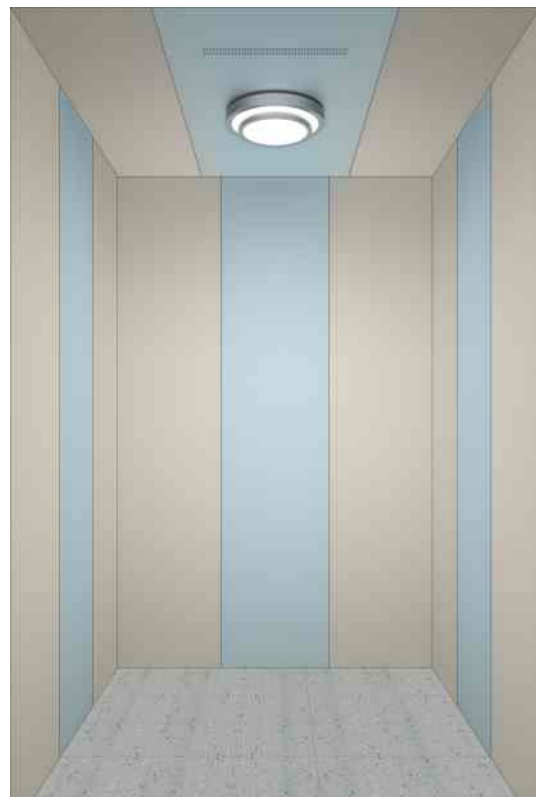
- Persons with disabilities control box
- Mirror stainless steel in the middle of the rear wall
- To extend the time to open the door in the car
- Barrier-free hall box
- Voice prompt

### ★ Optional configuration at extra cost





- 轿厢型号** ◆ CA724L
- 吊顶 ◆ CL724L, 钢板喷涂组合, 双层吸顶灯, LED
- 轿厢壁板 ◆ 碳钢喷涂板组合
- 前壁组件 ◆ 碳钢喷涂板
- 地板 ◆ FL020P
- 轿厢净高 ◆ 2495mm
- 
- 轿门 ◆ 碳钢喷涂板
- 层门 ◆ 碳钢喷涂板
- 门套 ◆ 碳钢喷涂小门套
- 操纵箱 ◆ BOP1-SP3
- 外召 ◆ HBI1-SP15
- 外召(并联) ◆ HBI1-2SP15



- The car models** ◆ CA724L
- Ceiling ◆ CL724L, coated steel plate combination, double-deck ceiling lamp,LED.
- Wall boards of car ◆ Carbon steel plate combination
- Components for front wall ◆ Carbon steel with coating
- Floor ◆ FL020P
- Clear height of car ◆ 2495mm
- Car door ◆ Carbon steel with coating
- 
- Landing door ◆ Carbon steel with coating
- Other door ◆ Narrow door jamb painted carbon steel
- Operation panel ◆ BOP1-SP3
- Hallcalling box ◆ HBI1-SP15
- Hallcalling box(duplex) ◆ HBI1-2SP15

**轿内操纵箱**  
Car operation panel



BOP1-SP3

**厅外召唤箱**  
Hallcalling box



HBI1-SP15



HBI1-2SP15

**按钮**  
Button



- 1型 1 Type  
大方按钮 Square button  
灰塑料面 Grey plastic surface  
发橙色光 Orange light

**消防盒**  
Fire box



FB-S1

# 有偿配置

OPTIONAL CONFIGURATION AT EXTRA COST



- 轿厢型号 ◆ CA722L
- 吊顶 ◆ CL722L, 镜面不锈钢框架, 扩散板, LED
- 轿壁壁板 ◆ 后壁中间镜面不锈钢, 其余发纹不锈钢
- 前壁组件 ◆ 发纹不锈钢
- 地板 ◆ FL020P



- 轿厢型号 ◆ CA723L
- 吊顶 ◆ CL723L, 两侧镜面不锈钢+筒灯, 中间蜂窝不锈钢框架扩散板, LED
- 轿厢壁板 ◆ 发纹不锈钢
- 前壁组件 ◆ 发纹不锈钢
- 地板 ◆ FL020P



- The car models ◆ CA722L
- Ceiling ◆ CL722L, mirror stainless steel frame, diffuser plate, LED
- Wall boards of car ◆ The middle of rear wall is of mirror stainless steel, the others are of hairline stainless steel.
- Components for front wall: ◆ Hairline stainless steel
- Floor ◆ FL020P



- The car models ◆ CA723L
- Ceiling ◆ CL723L, steel plates on both sides are of champagne gold stoving varnish with tube light., middle cellular stainless steel frame, diffuser plate, LED
- Wall boards of car ◆ Hairline stainless steel
- Components for front wall ◆ Hairline stainless steel
- Floor ◆ FL020P

# 有偿配置

OPTIONAL CONFIGURATION AT EXTRA COST



- 轿厢型号** ◆ CA087L
- 吊顶 ◆ CL078L, 装饰贴膜, 实木造型上白漆, 筒灯暗藏白光, LED
- 轿壁壁板 ◆ CP070, 后壁白木纹石饰面、饰框, 银镜马赛克, 镜面喷砂不锈钢; 侧壁白木纹石饰面, 浅色茶镜
- 前壁组件 ◆ 装饰贴膜ME-380
- 扶手 ◆ HR731
- 地板 ◆ FL044M



- 轿厢型号** ◆ CA096L
- 吊顶 ◆ CL079L, 发纹不锈钢镀香槟金框架, 中间透光云石, 搭配筒灯、白色透光板, LED
- 轿壁壁板 ◆ CP071, 后壁中间为大理石(白沙米黄), 两边为镜面不锈钢。右壁前、中间为喷砂蚀刻不锈钢镀香槟色, 右壁后为镜面不锈钢, 左壁与右壁对称
- 前壁组件 ◆ 发纹不锈钢镀香槟色
- 扶手 ◆ 无
- 地板 ◆ FL045M



- The car models** ◆ CA087L
- Ceiling ◆ CP070, Rear wall is white wood grain decoration surface and frame, silver mirror with mosaic, mirror stainless steel by sandblasting technology. Side wall is white wood grain decoration surface with light yellow glass.
- Wall boards of car ◆ Rear wall is white wood grain decoration surface with light yellow glass, Side wall: white wood grain decoration surface, white wood grain stone decoration frame, silver mirror with mosaic, mirror stainless steel by sandblasting technology.
- Components for front wall ◆ Decoration film ME-380
- Handrail ◆ HR731
- Floor ◆ FL044M



- The car models** ◆ CA096L
- Ceiling ◆ CL079L, champaign gold-plated hairline stainless steel frame, the middle is transparent marble, matched with down lamp, white transparent board, LED
- Wall boards of car ◆ the middle of the rear wall is marble (Limestone white), with mirror stainless steel on two sides. Front and middle of the right wall are sand blasting etching and stainless steel plate spray champagne gold, back part of the right wall is mirror stainless steel, the left and right are symmetric.
- Components for front wall ◆ Hairline stainless steel plate spray champagne gold
- Handrail ◆ None
- Floor ◆ FL045M

# 有偿配置

OPTIONAL CONFIGURATION AT EXTRA COST



- 轿厢型号 ◆ CA045L
- 吊顶 ◆ CL035L, 发纹不锈钢镀框架, 亚克力灯饰(井字格)亚克力条形灯饰
- 轿壁壁板 ◆ CP045, 侧壁钢板蚀刻喷涂哑香槟铝, 后左/右壁镜面不锈钢, 后中壁钢板蚀刻喷涂哑香槟铝
- 前壁组件 ◆ 镜面不锈钢
- 地板 ◆ FL022P



- 轿厢型号 ◆ CA071L
- 吊顶 ◆ CL060L, 镜面不锈钢框架, 白色透光
- 轿壁壁板 ◆ CP068, 两侧中间镜面不锈钢, 两侧前后花纹钢板, 后壁中间花纹钢板, 后壁左右镜面不锈钢
- 前壁组件 ◆ 镜面不锈钢
- 地板 ◆ FL023P



- The car models ◆ CA045L
- Ceiling ◆ CL035L, hairline stainless steel frame. Acrylic Light-fixture(tic-tac-toe Boards).Acrylic Strip Type Light-fixture
- Wall boards of car ◆ CP045, side wall are etching steel plate, coated with matte champagne aluminum. Left and right rear wall are mirror stainless steel. In the middle of the rear wall is etching steel plate, coated with matte champagne aluminum.
- Components for front wall ◆ Mirror stainless steel
- Floor ◆ FL022P



- The car models ◆ CA071L
- Ceiling ◆ CL060L, hair grain stainless steel frame, through plate side pervious to light
- Wall boards of car ◆ CP068, On both sides of the middle mirror stainless steel. On both sides of the plate before and after. After the wall plate in the middle. Around the back wall mirror stainless steel.
- Components for front wall ◆ Mirror stainless steel
- Floor ◆ FL023P

# 有偿配置

OPTIONAL CONFIGURATION AT EXTRA COST



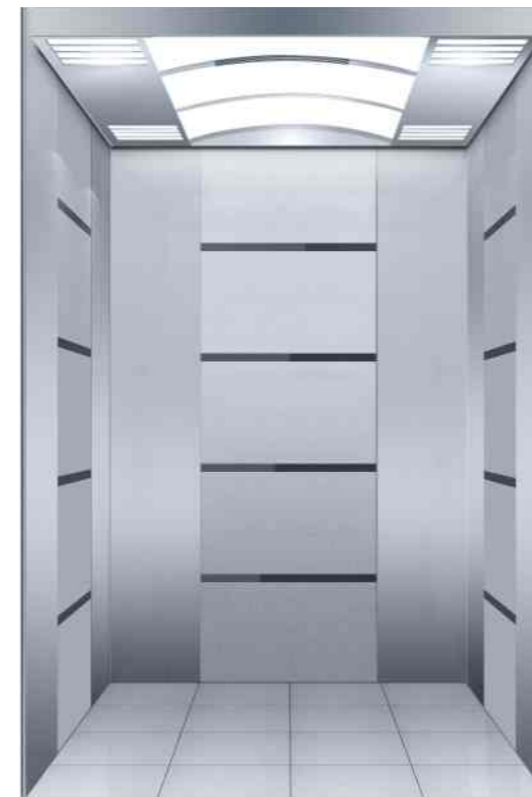
- 轿厢型号** ◆ CA047L
- 吊顶 ◆ CL701L, 镜面不锈钢框架, 中部镜面不锈钢镂空板搭配白色透光板
- 轿壁壁板 ◆ CP043, 左侧壁镜面蚀刻不锈钢镀金, 色搭配镜面不锈钢饰条, 右侧壁蚀刻不锈钢镀金色, 搭配镜面不锈钢饰条+镜面不锈钢, 后左侧镜面蚀刻不锈钢镀金色搭配镜面, 不锈钢饰条, 后右侧镜面不锈钢
- 前壁组件 ◆ 镜面不锈钢镀金色
- 地板 ◆ FL018P



- 轿厢型号** ◆ CA048L
- 吊顶 ◆ CL704L, 镜面不锈钢框架, 中部拱形白色透光板
- 轿壁壁板 ◆ CP048, 侧前/后壁发纹不锈钢, 侧中壁喷砂不锈钢搭配镜面不锈钢饰条, 后左/右壁发纹不锈钢, 后中壁喷砂不锈钢搭配镜面不锈钢饰条
- 前壁组件 ◆ 发纹不锈钢
- 地板 ◆ FL023P



- The car models** ◆ CA047L
- Ceiling ◆ CL701L, mirror stainless steel frame, in the middle of ceiling si mirror stainless steel hollowed plate with white photic plate .
- Wall boards of car ◆ CP043 Left side wall is mirror etching gold-plated stainless steel with mirror stainless steel decoration panel. Right side wall is mirror etching gold-plated stainless steel with mirror stainless steel decoration panel collocation to mirror stainless steel. Left rear wall is mirror etching gold-plated stainless steel with mirror stainless steel decoration panel, right rear wall is mirror stainless steel.
- Components for front wall ◆ Gold-plated mirror stainless steel
- Floor ◆ FL018P



- The car models** ◆ CA048L
- Ceiling ◆ CL704L, mirror stainless steel frame, central arch white transparent board
- Wall boards of car ◆ CP048 Both side of front and rear wall are hairline stainless.The middle of side wall are sand blasting stainless steel with mirror stainless steel decoration panel.Left and right rear wall are hairline stainless steel. The middle of raear wall are sand blasting stainless steel with mirror stainless steel decoration panel.
- Components for front wall ◆ Hairline stainless steel
- Floor ◆ FL023P

# 有偿配置

OPTIONAL CONFIGURATION AT EXTRA COST



- 轿厢型号** ◆ CA715L
- 吊顶: ◆ CL717L, 两侧钢板烤漆香槟金+筒灯, 中间钢板烤漆哑光银+双层吸顶灯, LED
- 轿厢壁板: ◆ CP085, 侧壁钢板烤漆香槟金; 后壁中间钢板烤漆哑光银, 左右钢板烤漆香槟金, 角落弧形灯柱, 乳白片暗藏光源
- 前壁组件: ◆ 发纹不锈钢
- 扶手: ◆ HR750(左侧)
- 地板: ◆ FL063P



- The car models:** ◆ CA715L
- Ceiling: ◆ CL717L, Steel plates on both sides are of champaign gold stoving varnish with tube light. Steel plate in the middle is of matte silver stoving varnish with double-deck ceiling lamp.LED
- Wall boards of car: ◆ CP085,Steel plates on side walls are of champaign gold stoving varnish. Steel plate in the middle of rear wall is of matte silver stoving varnish; steel plates on the left and the right of rear wall are of champaign gold stoving varnish. The corner is equipped with arc-shaped lamp pole and light source is hidden in milky white piece. Components for front wall: Mirror stainless steel
- Handrail: ◆ HR750(single)
- Floor: ◆ FL063P

装饰轿厢说明: 图示选配轿厢操纵箱样式仅为参考, 实物以合同签订操纵箱型号为准。  
注: 1、轿厢宽度小于1300mm时, CA715L轿厢后侧全烤漆香槟金。  
2、双开门时无灯柱。

Notes on decorated car: the optional car operation panel types shown in the picture are for reference only, and the real object shall be subject to the model of car operation panel specified in the contract.  
Note: 1. When the car wide lower than 1300mm, car rear wall of CA715L is champaign gold stoving varnish.  
2. No lamppost in double doors.

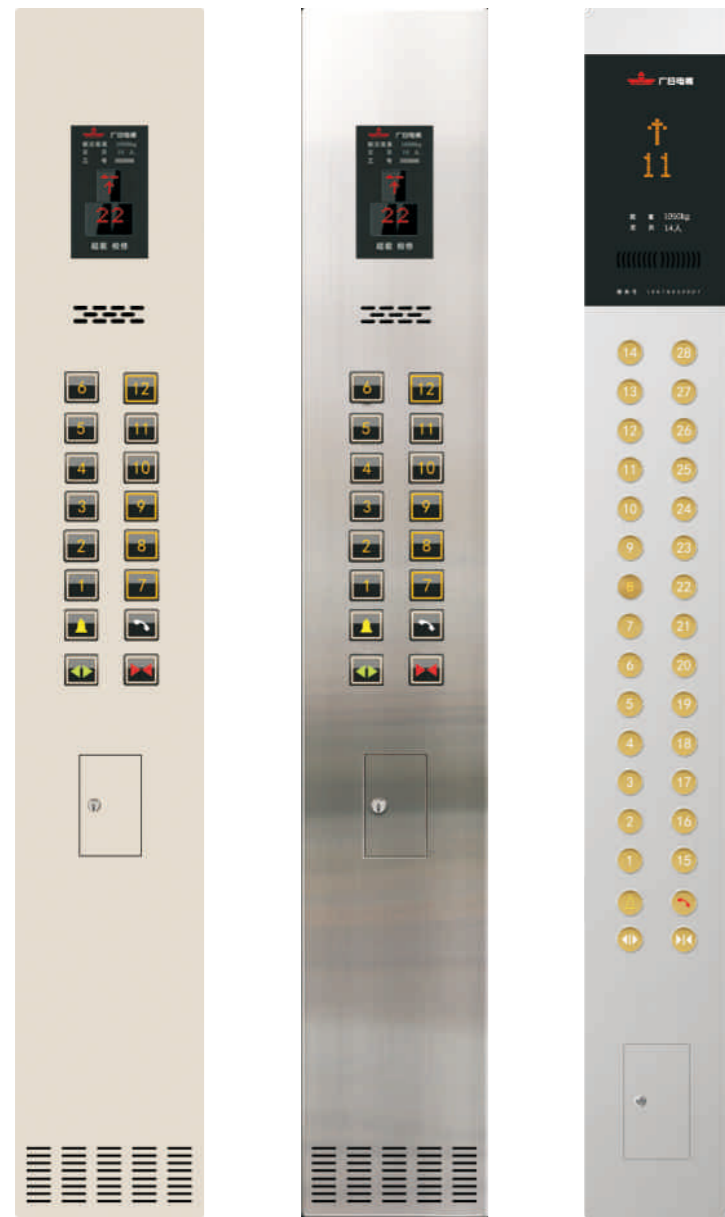


# 有偿配置

OPTIONAL CONFIGURATION AT EXTRA COST

## 轿内操纵箱

Car operation panel



TOP1-RP0

TOP1-SP0

BOP51-SP4

## 厅外召唤箱

Hallcalling box



HBI55-PU16

HBI54-PU16

HBI51-SP19

## 无障碍呼梯盒:

Barrier free call box



DBI21-S15

## 按钮

Button

21型 21 Type 大方按钮 Square button 灰塑料绒毛面 Grey plastic Fluffy surface 发橙色光 Orange light 带盲文 Braille	31型 31 Type 方形超薄按钮 Square button 黑色塑料面 Black plastic surface 发橙色光 Orange light	32型 32Type 方形超薄按钮 Square button 喷砂不锈钢面 Sand Blasted Stainless steel surface 发橙色光 Orange light	41型 41Type 方形超薄按钮 Square button 喷砂不锈钢面 Sand Blasted Stainless steel surface 发橙色光 Orange light 带盲文 Braille
51型 51 Type 圆形按钮 Round button 黄色塑料面 Yellow plastic surface 发白色光 White light	52型 52 Type 圆形按钮 Round button 黑色塑料面 Black plastic surface 发橙色光 Orange light	53型 53 Type 圆形按钮 Round button 黑色塑料面 Black plastic surface 发蓝色光 Blue light	61型 61 Type 圆形按钮 Round button 不锈钢面 Stainless steel surface 发蓝色光 Blue light 带盲文 Braille
62型 62 Type 圆形按钮 Round button 不锈钢面 Stainless steel surface 发蓝色光 Blue light	63型 63 Type 圆形按钮 Round button 不锈钢面 Stainless steel surface 发橙色光 Orange light	71型 71 Type 椭圆形按钮 Elliptical button 喷砂不锈钢面 Sand Blasted Stainless steel surface 发橙色光 Orange light	72型 72 Type 椭圆形按钮 Elliptical button 喷砂不锈钢面 Sand Blasted Stainless steel surface 镜面边框 Mirror 发橙色光 Orange light
81型 81 Type 椭圆形按钮 Elliptical button 喷砂不锈钢面 Sand Blasted Stainless steel surface 发橙色光 Orange light 带盲文 Braille	82型 82 Type 椭圆形按钮 Elliptical button 喷砂不锈钢面 Sand Blasted Stainless steel surface 镜面边框 Mirror 发橙色光 Orange light 带盲文 Braille	91型 91 Type 圆形按钮 Square button 内凹不锈钢面 Concave-convex Stainless steel surface 发白色光 White light	

## 残疾人操纵盘

Operating panel for the disabled



DOP21-SP0(E)



DOP21-S0(E)

# 有偿配置

OPTIONAL CONFIGURATION AT EXTRA COST

## 人机界面:

Human-computer intercaece

4.3寸召唤箱单色液晶显示

4.3 inch calling box monochrome LCD



V型 V Type

R型 R Type

Q型 Q Type

轿内液晶:

Operation panel LCD inside the car



W型(6.4寸单色液晶)  
W Type (6.4 inch operation panel monochrome LCD)



S型(7.5寸彩色液晶)  
S Type (7.5 inch operation panel color LCD)

8.8寸横式液晶显示:

8.8-inch horizontal type liquid crystal display



C型 C Type



Y、Z型(10.4寸图片、多媒体液晶)  
Y、Z Type (10.4 inch photo and multimedia LCD)



B型(15寸多媒体液晶)  
B Type (15 inch multimedia LCD)



D型 D Type



E型 E Type

## 到站灯:

Optional landing indicator



01A型(镜面不锈钢蚀刻面板, 发蓝光)  
01A Type (mirror stainless steel etching panel, with blue light)



03A型(镜面不锈钢蚀刻面板, 发橘黄色光)  
03A Type (mirror stainless steel etching panel, with orange light)



04A型(镜面不锈钢蚀刻面板, 发白光)  
04A Type (mirror stainless steel etching panel, with white light)



X型(19寸长条屏彩色横式液晶)  
X Type (19-inch color horizontal type liquid crystal with strip screen)

备注: 分体式操纵箱不能选用彩色液晶  
Remarks: color liquid crystal should not be employed for split type car operation panel.

# 功能介绍

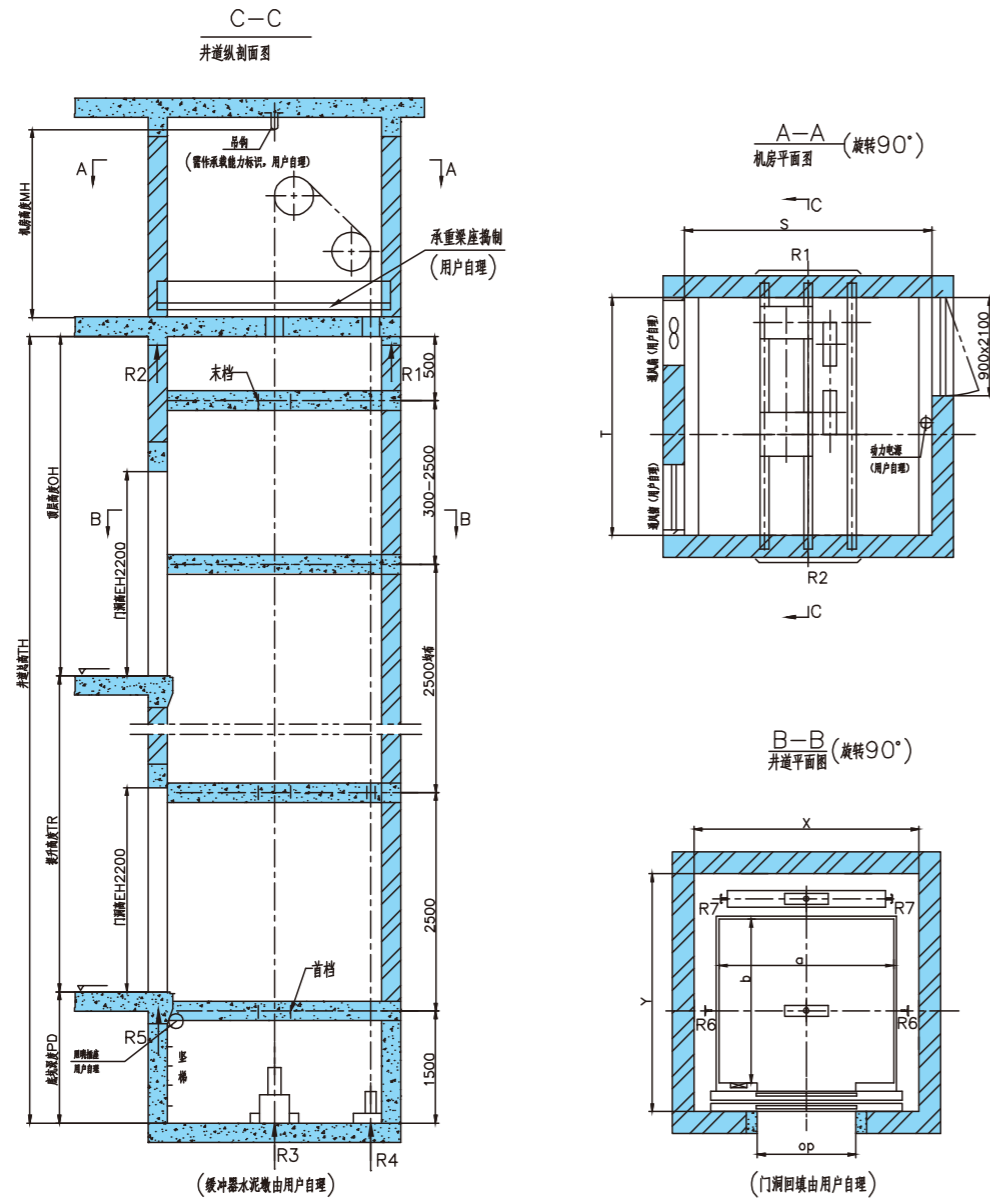
## INTRODUCTION TO FUNCTIONS

基本功能		Basic functions	
安全接触器触点检测保护	01	Trigger point detection protection of safety trigger	
按钮控制	02	Pushbutton control; pushbutton operation	
报警按钮	03	Alarm button	
变频器多重保护	04	Multiple protection of frequency converter	
层楼位置信号的自动修正	05	Automatic correction of landing floor signal	
超速保护	06	Over-speed protection	
超载保护	07	Over-load protection	
磁角度自学习功能	08	Magnetic degree self-study function	
到站钟	09	Arrival chime	
错相保护	10	Fault-phase protection	
点阵式层楼显示器	11	Matrix-type floor indicator	
电梯自救运行	12	Automatic rescue traveling	
反向时自动消指令	13	Automatic cancellation in case of reversal car call	
防捣乱功能(7层及以上)	14	Anti-disruptive function(valid for 7 floors and above)	
防溜车保护	15	Anti-stalling protection	
防门锁短接	16	Protection against short circuit of door lock	
防终端越程保护	17	Protection against over-travel at terminal	
故障历史记录	18	History record of trouble	
故障显示	19	Indication of troubleshooting	
故障重开门	20	Reopen in case of failure	
关门按钮提前关门	21	Closing button for door-closing in advance	
光幕	22	Light beam screen protection	
换站停靠	23	Next landing	
火灾应急返回	24	Emergency return in case of fire	
轿厢意外移动保护(提升高度≥60m)	25	Unintended car movement protection system (lifting height ≥60m)	
集选控制	26	Collective selective control	
检修操作	27	Inspection operation	
井道层楼数据自学习	28	Date self-study of shaft floor	
开门按钮开门	29	Door-opening button for door opening	
开锁区域外不能开门保护	30	Safety measures of door lockup outside door area	
楼层滚动显示	31	Scrolling display of floor	
满载直驶	32	Bypass when full load	
门受阻保护	33	Door overload protect	
内部通话装置/对讲系统	34	Internal communication device/ intercom system	
逆向运行保护	35	Protection against reverse travel	
起动补偿	36	Starting compensation	
欠相保护	37	Under-phase protection	
欠压保护	38	Under-voltage protection	
停电照明功能	39	Emergency car lighting	
误指令消除	40	Cancellation of false cal	
闲时节电	41	Power saving at idle hours	
消防信号反馈	42	Feedback of fire signals	
永磁同步变频门机	43	Permanent-magnetic synchronous door operator	
运行超时保护	44	Over time protection during running	
运行次数计数器	45	Operation counter	
驻停/退出运行	46	Parking	
自动门	47	Power operated door	
再平层/微动再平层(提升高度>60m)	48	Relevelling / inching relevelling (lifting height > 60m)	

选配功能		Optional functions	
安全触板	01	Safety edges for door	
并联控制	02	Duplex control	
不停层设定	03	Floor lock out operation	
触板带光幕	04	Safety edges and light beam screen	
地震管制	05	Seismic function	
电梯司机操纵	06	Elevator attendant's operation	
独立操作	07	Independent operation	
独立随行视频电缆	08	Independent video cable	
独立随行音视频电缆	09	Independent accompanying audio and video cable	
非服务层任意设置	10	Discretionary setup modes of service floor	
非数字字符层楼显示设定	11	Multiple setup modes of floor indicating characters	
副操纵盘	12	Auxiliary operation panel	
轿内读卡器	13	The card reader in the car	
能量回馈装置	14	Regenerative power drive	
群控	15	Group control	
双开门	16	Double door opening	
双开门独立控制开关门	17	Double door opening independent control	
厅外读卡器	18	The IC card reader in lobby	
厅外到站灯	19	Landing hall stop light	
小区监视	20	Remote monitor	
语音报站	21	Speech synthesis service	
自动返基站	22	Automatic return to home landing	
自动救援操作/停电自动平层	23	Automatic rescue leveling in case of power failure.	
IC卡梯控功能	24	IC card ladder function	
密码梯控功能	25	Password ladder function	
指纹识别功能	26	Fingerprint recognition function	
VIP专用梯控功能	27	VIP ladder function	
远距离识别功能	28	Long distance recognition function	
故障智能安抚	29	Fault intelligence to appease	
物联网	30	Internet of things	
IC卡(卡片式)	31	IC card (Card type)	
IC卡(纽扣式)	32	IC card (Button type)	
IC卡(远距离卡)	33	IC card (Long distance card)	
模拟视频监控	34	Analog video supervise	
数字视频监控	35	Digital video supervise	

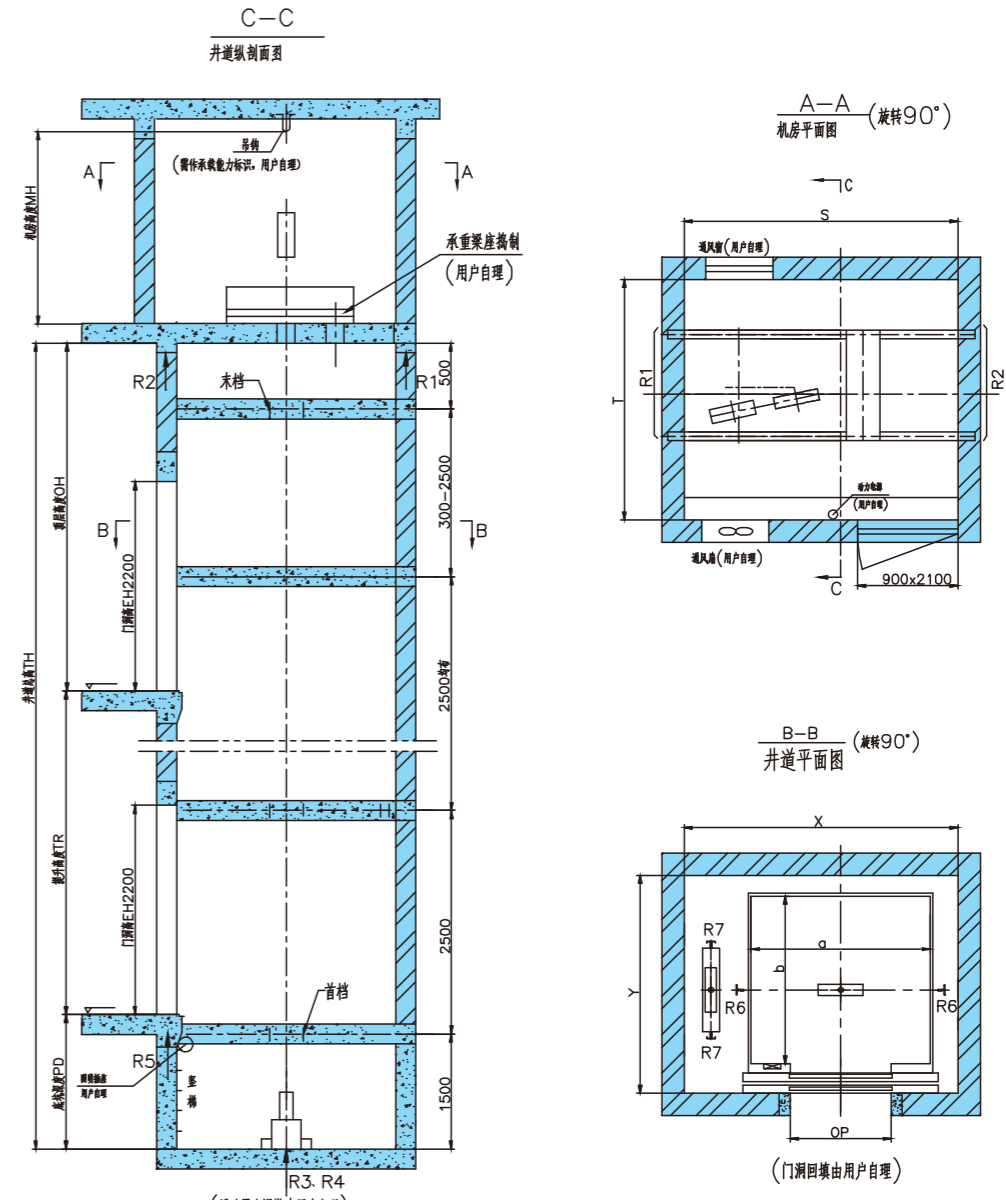
无障碍功能选配		Option for barrier-free functions	
残疾人操纵盘(含HR720扶手)	01	Operating panel for the disabled(standard configurationHR720 handrail)	
轿厢后壁中间镜面不锈钢	02	Mirror stainless steel in the middle of the rear wall	
轿内延长开门时间	03	In-car door opening time delay	
无障碍呼梯盒	04	Barrier free call box	
语音提示	05	Voice prompt	

标准井道图 Standard shaft layout



对重后置, 标准轿厢 Rear mounted counterweight, standard cabin

选配井道图 Optional shaft drawing



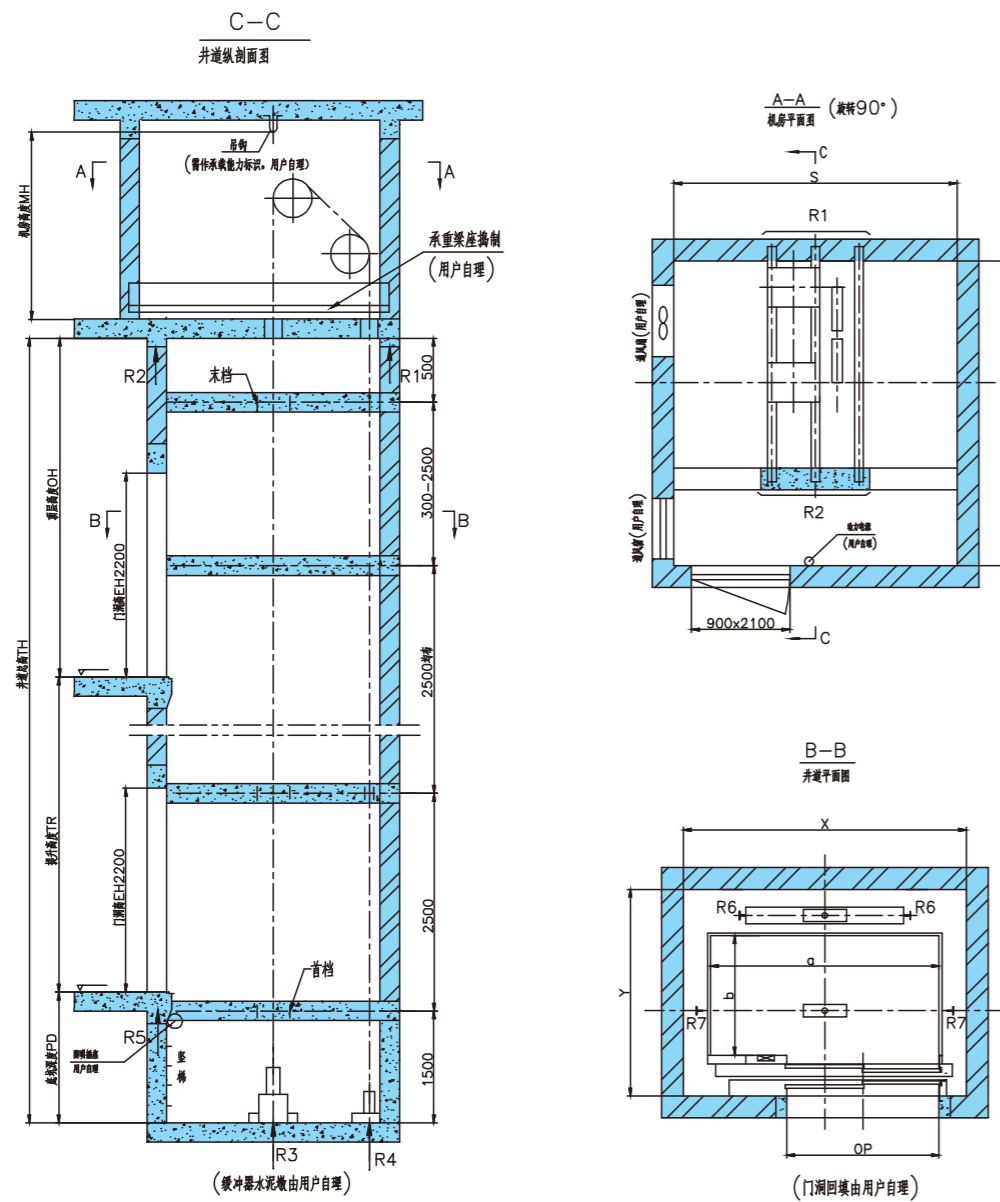
对重左置 Left mounted counterweight, double opening

额定载重kg Rated capacity	井道尺寸 X×Y Shaft size	轿厢尺寸 a×b Size of car	开门尺寸OP×高度 Dimension for door opening Height	机房尺寸 S×T Size of machine room	机房支反力kN Machine room reactions				底坑支反力kN Pit reactions		
					R1	R2	R3	R4	R5	R6	R7
630	1850 × 2050	1100 × 1400	800 × 2100	1850 × 2050	38	21	57	45	11	25	15
825	1850 × 2000	1400 × 1350	800 × 2100	2100 × 2000	46	23	68	52	11	30	25
	2100 × 2050 (V=2.0m/s)										
	2300 × 2050 (V=2.5m/s)										
1050	2100 × 2200	1600 × 1500	900 × 2100	2100 × 2200	68	43	90	73	13	45	25
1150	2400 × 2200	1800 × 1500	1100 × 2100	2300 × 2200 (V=2.5m/s)	85	52	105	85	15	50	25
				2400 × 2200 (V=2.5m/s)							
1350	2550 × 2200	2000 × 1500	1100 × 2100	2550 × 2200	93	63	120	93	18	60	25
1600	2550 × 2450	2000 × 1750	1100 × 2100	2550 × 2450	105	75	140	110	20	70	25

额定载重kg Rated capacity	井道尺寸 X×Y Shaft size	轿厢尺寸 a×b Size of car	开门尺寸OP×高度 Dimension for door opening Height	机房尺寸 S×T Size of machine room	机房支反力kN Machine room reactions				底坑支反力kN Pit reactions		
					R1	R2	R3	R4	R5	R6	R7
630(左/右置)	2050 × 1800	1100 × 1400	800 × 2100	2050 × 2100	38	21	57	45	11	25	15
825(左/右置)	2250 × 1750	1400 × 1350	800 × 2100	2250 × 1950	46	23	68	52	11	30	25
				2250 × 2150 (2.5m/s)							
1050(左/右置)	2450 × 1950	1600 × 1500	900 × 2100	2450 × 2150 2450 × 2350 (2.5m/s)	68	43	90	73	13	45	25
1150(左/右置)	2700 × 1950	1800 × 1500	1100 × 2100	2700 × 2150	85	52	105	85	15	50	25
				2700 × 2350 (2.5m/s)							
1350(左/右置)	2900 × 2000	2000 × 1500	1100 × 2100	2900 × 2250	93	63	120	93	18	60	25
				2900 × 2450 (2.5m/s)							
1600(左/右置)	2900 × 2200	2000 × 1750	1100 × 2100	2900 × 2400	105	75	140	110	20	70	25
				2900 × 2500 (2.5m/s)							

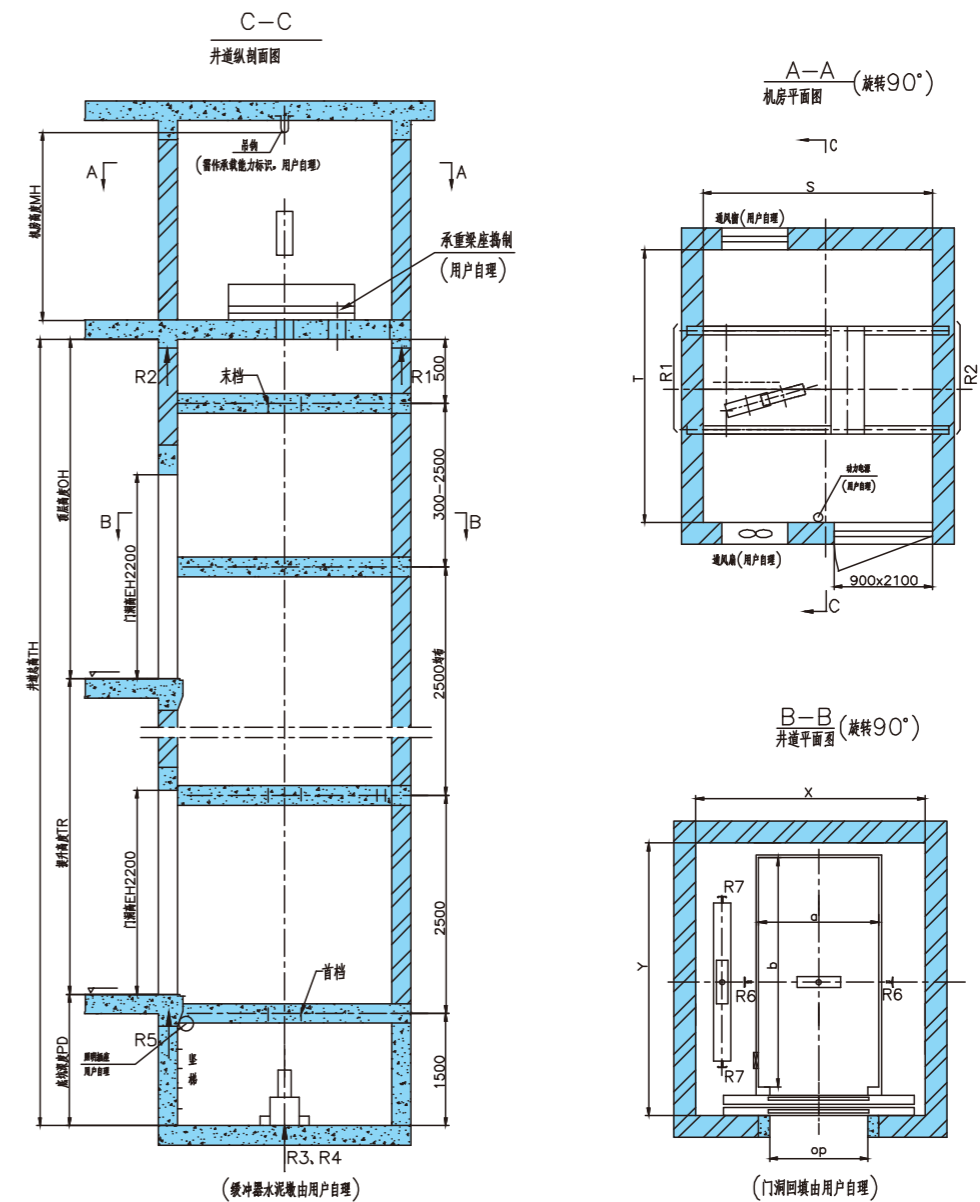
注：上表参数630-1150kg需有选配铸铁对重。Above parameters 630-1150kg need optional configuration of castiron counterweight at extra cost.

标准井道图 Standard shaft layout



对重后置，宽轿厢 Rear mounted counterweight, wide cabin

选配井道图 Optional shaft drawing

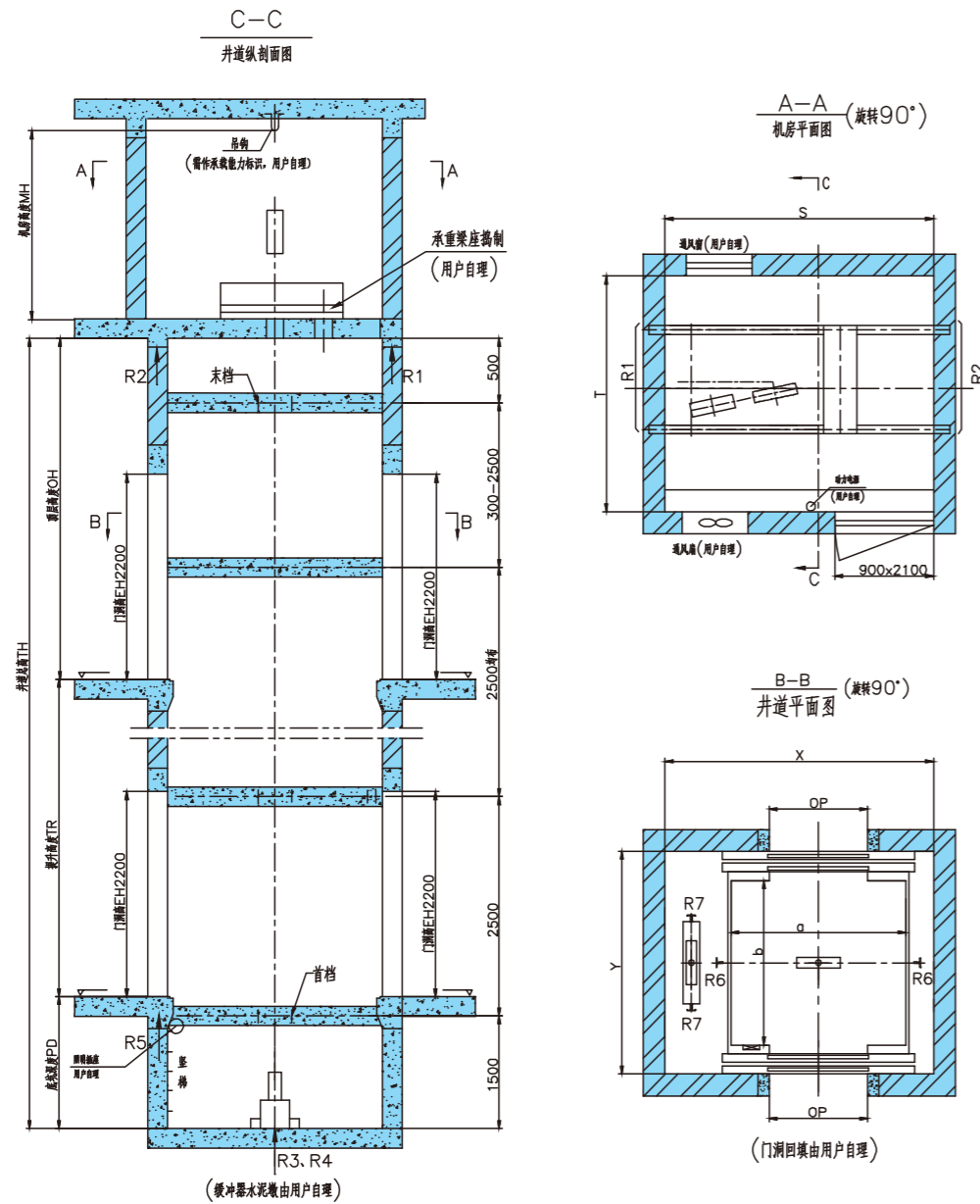


对重前置，深轿厢 Left mounted counterweight, deep cabin

额定载重kg Rated capacity	井道尺寸 X×Y Shaft size	轿厢尺寸 a×b Size of car	开门尺寸OP×高度 Dimension for door openingHeight	机房尺寸 S×T Size of machine room	机房支反力kN Machine room reactions				底坑支反力kN Pit reactions		
					R1	R2	R3	R4	R5	R6	R7
1050(宽轿厢) Wide	2600×1900	2100×1100	1400×2100	2600×2800	68	43	90	73	13	45	25

额定载重kg Rated capacity	井道尺寸 X×Y Shaft size	轿厢尺寸 a×b Size of car	开门尺寸OP×高度 Dimension for door openingHeight	机房尺寸 S×T Size of machine room	机房支反力kN Machine room reactions				底坑支反力kN Pit reactions		
					R1	R2	R3	R4	R5	R6	R7
1050(深轿厢) Deep	2100×2500	1100×2100	900×2100	2100×2500	68	43	90	73	13	45	25

标准井道图 Standard shaft layout



对重左置, 双开门 Left mounted counterweight, double opening

型号 Model	额定载重kg Rated capacity	电机功率kW Motor power	额定速度m/s Rated speed	乘客人数 Number of passenger
MAX-E630-CO	630	4.6/8.1/8.1	1.0/1.5/1.75	8
MAX-E825-CO	825	5.5/8.0/9.7/11/13.4	1.0/1.5/1.75/2.0/2.5	11
MAX-E1050-CO	1050	6.7/10.0/11.7/13.4/17.1	1.0/1.5/1.75/2.0/2.5	14
MAX-E1050-2S	1050	6.7/10.0/11.7/13.4/17.1	1.0/1.5/1.75/2.0/2.5	14
MAX-E1150-CO	1150	7.7/13.4/13.4/15.4/18.7	1.0/1.5/1.75/2.0/2.5	15
MAX-E1350-CO	1350	8.8/15.4/15.4/17.6/22	1.0/1.5/1.75/2.0/2.5	18
MAX-E1600-CO	1600	10.4/18.2/18.2/20.8/26	1.0/1.5/1.75/2.0/2.5	21

额定速度m/s Rated speed	最大提升高度m Max. lifting height	消防服务通道层到端站最大距离m Maximum distance TR from fire-fighting service channel floor to the end stop	最大停站数 Maximum number of stops	最小顶层高度mm Minimum overhead		最小机房高度mm Minimum height of the machine room	最小层间距离mm Minimum distance between floors	最小底坑深度mm Minimum depth of pit	
				630-1150kg	1350-1600kg			提升高度≤80m	提升高度>80m
1.0	60	58	21	4150	4250*	2500	2650	1350	1450*
1.5	90	86	31	4250	4350*	2500	2650	1500	1650
1.75	100	100	34	4350	4450*	2500	2650	1550*	1700*
2.0	115	115	39	4550	4650*	2500	2650	1600	1700
2.5	120	120	41	4750	4850*	2500	2650	1650*	1800*
								1800	1900
								1900*	2000*

\* 载重 Load: 1350-1600kg

- 注: 1、最大停站数按3米/层计算 (单开门) The max floor of calculation way is 3 meters per(single door opening)  
 2、最小层间距小于2650mm时需非标咨询 If the minimum interval is less than 2650mm, please contact us  
 3、对于建筑上的特殊要求, 如北方楼层做地热钢牛腿拉爆螺栓安装位置下移, 钢牛腿加长时, 最小楼层高度需要相应增加。 For the special requirements of buildings, such as the northern floor do geothermal steel bracket to pull down explosive bolt installation position, steel bracket is extended, the minimum floor height needs to be increased accordingly.

额定载重kg Rated capacity	井道尺寸 X×Y Shaft size	轿厢尺寸 a×b Size of car	开门尺寸OP×高度 Dimension for door opening Height	机房尺寸 S×T Size of machine room	机房支反力kN Machine room reactions				底坑支反力kN Pit reactions		
					R1	R2	R3	R4	R5	R6	R7
630 (双开门)	2050 × 1930	1100 × 1400	800 × 2100	2050 × 2100	38	21	57	45	11	25	15
825 (双开门)	2250 × 1880	1400 × 1350	800 × 2100	2250 × 2100 2250 × 2300 (2.5m/s)	46	23	68	52	11	30	25
1050 (双开门)	2450 × 2030	1600 × 1500	900 × 2100	2450 × 2150 2450 × 2350 (2.5m/s)	68	43	90	73	13	45	25
1150 (双开门)	2700 × 1980	1800 × 1450	1100 × 2100	2700 × 2150 2700 × 2350 (2.5m/s)	85	52	105	85	15	50	25
1350 (双开门)	2900 × 2030	2000 × 1500	1100 × 2100	2900 × 2230 2900 × 2430 (2.5m/s)	93	63	120	93	18	60	25
1600 (双开门)	2900 × 2280	2000 × 1750	1100 × 2100	2900 × 2380 2900 × 2580 (2.5m/s)	105	75	140	110	20	70	25

## 甲方负责土建事项说明

### 一、注意事项：

- 1.本表中尺寸只适用于标准技术规格，其他技术规格要求尺寸请咨询我司。
- 2.本表中所示的井道尺寸为完成底坑防水工作后的最小尺寸，不包括井道垂直偏差，井道垂直偏差具体见土建技术要求。
- 3.井道四壁为 $\geq 200\text{mm}$ 混凝土墙或 $\geq 240\text{mm}$ 圈梁砖墙，不允许采用空心砖筑砌。
- 4.井道原则上不要设置紧邻起居室或对声音敏感区域。如实际情况不能达到本规定，则用户应作好相关隔音减震措施。
- 5.电梯井道原则上不要设置在人们能到达的空间上面。如实际情况不能达到本规定，请与我司联络。
- 6.如电梯井道为钢结构，请尽早与我司联络。
- 7.若是对重设置安全钳，井道尺寸要求将会增加。
- 8.当选用防火门时，井道尺寸要求将会增加。

### 二、电梯土建应满足的工作环境要求：

- 1.机房内的空气温度应保持在 $+5\sim+40^{\circ}\text{C}$ 之间。
- 2.运行地点的空气相对湿度在最高温度为 $+40^{\circ}\text{C}$ 时不超过50%，在较低温度下可有较高的相对湿度，最湿月的月平均最低温度不超过 $+25^{\circ}\text{C}$ ，该月的月平均最大相对湿度不超过90%。若可能在电器设备上产生凝露，应采取相应措施。
- 3.供电形式为三相五线制，独立地线，电压相对于额定电压的波动应在 $\pm 7\%$ 范围内，电梯启动时电压降在10%以内。
- 4.环境空气中不应含有腐蚀性和易燃性气体，污染等级不应大于GB 14048.1-2006规定的3级。

### 三、建筑物业主或总承办商负责的工作：

- 1.建造电梯井道，并配备相关照明、通风及防水设备。
- 2.根据要求预留孔或打孔，及其后进行修补。
- 3.根据要求设置承重吊钩和标示吊钩最大承重值。
- 4.当电梯井道尺寸过大超过规格尺寸，需要设独立隔梁；或同一井道安装两台及以上电梯，需要设中间梁。
- 5.井道内或机房的隔音。
- 6.如果中间有多层不停层，需在井道适当地方设置紧急出口。
- 7.安排配电箱和照明电线以及到电气房的电源。
- 8.在电梯施工期间提供一个适当的、可上锁的地方，以便存放电梯设备和工具。
- 9.负责捣制踏板、搁机梁墩及缓冲墩座，封堵每层门洞。
- 10.电梯安装完毕后，完成电梯候梯厅四周的墙及地板的整修。
- 11.完成所有其他建筑物相关的承建工作。

## CIVIL ENGINEERING COORDINATION

Party A shall be responsible for the statement of civil engineering matters.

### Attention

- 1.The dimensions in this table are only applicable to the standard specifications, for other required specification sizes, please contact us.
- 2.Shaft dimensions in Parameter Table are minimal requirement after water-proof process in pit, but not included vertical deviation in shaft.  
For vertical deviation in shaft, please refer to technical requirement of civil works.
- 3.Shaft walls should be 200mm concrete walls or 240mm brick walls, hollow brick is prohibited.
- 4.Shaft close to living room or sound-sensitive area is not recommended; otherwise proper sound proof solution should be adopted by user.
- 5.Shaft over accessible area is not recommended, being that case please consult with our overseas department
- 6.If the shaft is steel construction, please consult with our overseas department.
- 7.If safety clamps is adopted on counterweight, shaft dimensions requirement shall be extended.
- 8.If fire-proof door is adopted, shaft dimensions requirement shall be extended.

### Working environment for civil work

- 1.Temperature in machine room should be around  $+5\sim+40^{\circ}\text{C}$ .
- 2.Relative humidity in running site should not be over 50% at highest temperature  $+40^{\circ}\text{C}$ . Higher relative humidity is allowed in lower temperature, in most humid month average lowest temperature should not be over  $+25^{\circ}\text{C}$ , average highest relative humidity should not be over 90%.  
Proper measures should be adopted to cope with possible condensation on electric equipment.
- 3.The Power Source should be in 3 Phases, 5 lines. Voltage fluctuation of power supply voltage should be within the tolerance of  $\pm 7\%$  of rated voltage.
- 4.Erosive and flammable gases in air is prohibited, pollution level should exceed level 3 according code GB 14048.1-2006.

### Responsibilities for property owner or contractor

- 1.Shaft building and provision of associated equipments of lighting, ventilation and water-proofing.
- 2.Hole drilling on request and afterward patching /filling.
- 3.Lifting hook installation on request.
- 4.If the shaft dimension is larger than standard excessively, independent isolating beam needs to be set up; If more than 1 elevator will be installed in one shaft, intermediate beam should be needed.
- 5.Sound-proof work in shaft and machine room.
- 6.Emergency exit in shaft will be needed when vertical distance between two landing door is too long (11 meters).
- 7.Power distribution box, lighting wires, power supply to electric equipment room.
- 8.Provision of suitable and lockable storeroom for elevator equipment and tools during elevator installation.
- 9.Base casting and cave filling. After installation, complete the renovations of walls and floors of the landing hall.
- 10.Walls and floor finishing restoration in waiting hall after installation.
- 11.Other necessary construction work.

## 智能服务

### INTELLIGENT SERVICE

广日电梯始终坚持“服务创造价值”的理念，通过全球各地超过160多家的驻外分支机构和600多家授权合作网点，采用服务+互联网技术手段，应用云计算、大数据技术，为国内外客户提供安装、维修、保养、工程改造、咨询、培训等全生命周期的智能管理服务。

Guangri Elevator always adheres to the concept of “Service creates value” and provides domestic and foreign customers with life-circle intelligent management services, including installation, repair, maintenance, engineering reform, consultation and training, by virtue of the technological mean of “Service + Internet” and applying cloud computing and big data technology through over 160 branches and more than 600 authorized cooperative agents.



#### ● 个性定制

产品定制方案快速生成、客户定制化管理系统、数据分享交互服务。

#### ● Personalized customization

Quick generation of product customization scheme, customized management system and data sharing and interaction services



#### ● 远程运维

远程运维服务平台、APP开发及应用。

#### ● Remote operation and maintenance

Remote operation and maintenance service platform, APP development and application



#### ● 远程监控

为客户建立完整档案及客户服务信息 (CRM), 实现远程维护和技术支持。

#### ● Professional Team

We will establish a complete customer records and CRM, achieving remote maintenance and technology support.

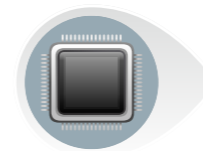


#### ● 智能决策

专家咨询系统、智能决策系统、智能维改方案快速生成。

#### ● Intelligent decision-making

Expert consultation system, intelligent decision-making system and quick generation of intelligent maintenance and improvement schemes



#### ● 配件中心

在全国范围工程服务网络终端设立备件库及配件商城。

#### ● Spare Parts Center

We will set up spare parts warehouse at the network terminals of engineering service and an online shop for spare parts.



#### ● 全时响应

24小时全天候运行的客户服务中心，可随时为客户提供服务帮助。

#### ● 24 Hours Response

Our customer service center is operated for 24 hours every day, helping our customers at any time.