

全国服务热线 Hotline in China 400-8866-130

www.guangri.com.cn



欢迎关注广日电梯官方微信

驻外营销公司 Distribution Company out of Guangzhou

广州广日电梯工程有限公司
地址:广东省广州市天河区天河路238号华龙大厦6楼
电话:020-3113 1008

深圳市广日电梯维修服务有限公司
地址:深圳市福田区八卦一路鹏益花园3栋1903室
电话:0755-2584 9770

珠海市广日电梯工程服务有限公司
地址:广东省珠海市吉大石花东路58号华景花园23栋地下
电话:0756-3355 801

佛山广日电梯工程有限公司
地址:广东省佛山市汾江中路大观街4号
电话:0757-8224 3455

广州广日电梯工程有限公司汕头分公司
地址:广东省汕头市龙湖区长江路23号新一城商业中心2幢1604-1607号
电话:0754-8992 3004 / 87263 404

梅州服务中心
地址:广东省梅州市梅江区彬芳大道88号新金雁大酒店2楼
电话:0753-2262 007

广州广日电梯工程有限公司清远分公司
地址:广东省清远市清城区东城大道6号新时代嘉园八座22层02号
电话:0763-3787 100

广州广日电梯工程有限公司惠州分公司
地址:广东省惠州市江北文明一路9号富绅大厦809-810室
电话:0752-2203 161

东莞服务中心
地址:广东省东莞市莞城区东纵路地王广场商务中心603室
电话:0769-2223 8516

粤西服务中心
地址:广东省湛江市霞山区人民大道南34号湛江大厦905室
电话:0759-2221 620

广州广日电梯工程有限公司湖南分公司
地址:湖南省长沙市雨花区韶山中路419号凯宾商业广场南塔1705-1708室
电话:0731-8990 7817/8579 2218

株洲服务中心
地址:湖南省株洲市天元区奥园广场一期1栋2单元1208室
电话:0731-2828 2921

衡阳服务中心
地址:湖南省衡阳市蒸湘区白云路66号君馨名邸5号楼1204室
电话:0734-8333 034

常德服务中心
地址:湖南省常德市武陵区滨湖路万业城东单元604室
电话:0736-7178 996

吉首服务中心
地址:湖南省吉首市乾州新城世纪山水12栋104
电话:0743-8711 658

广州广日电梯工程有限公司河南分公司
地址:河南省郑州市郑东新区商务内环11号楼金成东方国际1301室
电话:0371-5567 8625

漯河服务中心
地址:河南省漯河市郾城区海河路与舟山路交叉口向东50米

广州广日电梯工程有限公司北京分公司
地址:北京市石景山区八大处路49号点石商务公园1号楼1007、1008室
电话:010-8878 5366

内蒙古服务中心
地址:内蒙古包头市青山区青年路万达广场8号楼3单元405
电话:0472-5245 033

广州广日电梯工程有限公司天津分公司
地址:天津市河西区五一阳光皓日园7号楼4门302室
电话:010-5263 8621

广州广日电梯工程有限公司河北分公司
地址:河北省石家庄市裕华区槐安东路152号金源商务广场018幢2-501
电话:0311-8529 1800

广州广日电梯工程有限公司湖北分公司
地址:湖北省武汉市江汉区中央商务区泛海国际SOHO城4号楼18层1号
电话:027-6566 2839

襄阳服务中心
地址:湖北省襄阳市樊城区松鹤路齐管小区31栋3单元6楼
电话:027-6566 2839

广州广日电梯工程有限公司辽宁分公司
地址:辽宁省沈阳市苏家屯区南京南街1208号奥园国际城99号楼1301
电话:024-3153 3809

吉林服务中心
地址:吉林省长春市南关区吉顺街与解放大路交汇 长春国际商务中心B-1区1202室
电话:0431-8173 8126

广州广日电梯工程有限公司黑龙江分公司
地址:黑龙江省哈尔滨市道里区群力大道星光耀广场(一期)办公2号楼2212室
电话:0451-8480 7630

广州广日电梯工程有限公司江苏分公司
地址:江苏省南京市汉中路185号鸿运大厦9楼
电话:025-5225 8710

广州广日电梯工程有限公司南通分公司
地址:江苏省南通市港闸区金海岸广场1幢1610
电话:0513-5588 0474

广州广日电梯工程有限公司徐州分公司
地址:江苏省徐州市泉山区西安北路6号恒茂大厦2706室
电话:0516-8558 1557

广州广日电梯工业有限公司上海分公司
地址:上海市杨浦区国霞路458弄15号301室
电话:021-3362 6178

广州广日电梯工业有限公司杭州分公司
地址:浙江省杭州市下城区瑞银街108号1幢416室
电话:0571-8693 3827

广州广日电梯工业有限公司江西分公司
地址:江西省南昌市高新区京东大道177号群辉大厦606室
电话:0791-8855 0015

江西莱菱电梯工程有限公司
地址:江西省南昌市青山湖区洛阳路现代庄园90号
电话:0791-8815 3437

广州广日电梯工业有限公司安徽分公司
地址:安徽省合肥市政务区祁门路333号新地中心C座1804室
电话:0551-6264 8265

蚌埠服务中心
地址:安徽省蚌埠市蚌山区新地城市广场6栋2单元701室
电话:0552-3075 880

广州广日电梯工业有限公司山东分公司
地址:山东省济南市高新区舜华路2000号舜泰广场9号楼北楼705A
电话:0531-8289 6855

青岛服务中心
地址:山东省青岛市李沧区巨峰路177号万达中央公馆1号楼1单元1103室
电话:0532-6770 5669

广州广日电梯工业有限公司福建分公司
地址:福州市鼓楼区五一中路18号正大广场景台1306室
电话:0591-8788 0521

广州广日电梯工业有限公司陕西分公司
地址:陕西省西安市未央区凤城二路赛高商务港2603室
电话:029-8523 9773

新疆服务中心
地址:新疆维吾尔自治区乌鲁木齐市新市区西环路728号
马德里春天2栋2单元902室
电话:185 9919 5330

宁夏服务中心
地址:宁夏回族自治区银川市金凤区宝湖中路50号鲁银城市公元57-2-702室
电话:0951-6859 510 / 139 0924 7888

广州广日电梯工业有限公司青海分公司
地址:青海省西宁市城西区西川南路76号万达1号写字楼10层11005室
电话:0971-8455 786

广州广日电梯工业有限公司甘肃分公司
地址:甘肃省兰州市七里河区建工西街3号金雨大厦1510室
电话:0931-8476 346

广州广日电梯工业有限公司四川分公司
地址:四川省成都市二环路东五段9号鑫鑫大厦5A
电话:028-8453 3155 028-8678 4616

南充服务中心
地址:四川省南充市顺庆区稻香路194号3号
电话:0817-2246 583

内江服务中心
地址:四川省自贡市自流井区南湖国际社区11栋1单元25楼147号
电话:185 8202 5870 / 135 4038 7528

广州广日电梯工业有限公司重庆分公司
地址:重庆市北江区观音桥红鼎国际A座25-10
电话:023-6707 3068

广州广日电梯工业有限公司海南分公司
地址:海南省海口市龙华区大同路38号财富中心705室
电话:0898-3636 9086

三亚服务中心
地址:海南省三亚市解放路名称假日广场12楼0102室
电话:0898-8866 9920

广州广日电梯工业有限公司广西分公司
地址:广西南宁市东葛路29-1荣和中央公园1号楼1315-1318室
电话:0771-5671 184

广州广日电梯工业有限公司山西分公司
地址:山西省太原市高新区高新街9号瑞杰科技中心B座312室
电话:0351-5601 399

广州广日电梯工业有限公司云南分公司
地址:云南省昆明市西山区绿荫大道明眸中心1001室
电话:0871-6355 5295

贵州服务中心
地址:贵阳市云岩区北京路银海元隆12栋2单元34楼1号
电话:0851-2246 583

总部 The Headquarters

广州广日电梯工业有限公司
地址:广州市番禺区石楼镇国贸大道南636号
ADD: 636 South of GuoMao Road Shilou County
Panyu District, Guangzhou
电话(Tel): +86-20-3922 1188
传真(Fax): +86-20-3922 1155

营工中心 Sales and Engineering Headquarters

地址:广州市天河区科新路2号
ADD: No.2 of Kexin Road TianHe District, Guangzhou
电话(Tel): +86-20-8770 5706
传真(Fax): +86-20-8779 2613

进出口科 Import & Export

电邮(E-mail): export-dept@guangri.com.cn
电话(Tel): +86-20-8770 5706
传真(Fax): +86-20-8779 2613



Green Max 系列 MAX-H家用电梯 Home Lift



广州广日电梯工业有限公司
GUANGZHOU GUANGRI ELEVATOR INDUSTRY CO.,LTD.

全新家用电梯

BRAND-NEW HOME ELEVATOR

上下之间 尊享品味
Enjoying yourself in our elevator up and down

高雅的生活品质源于内心对完美的追求，广日家用电梯无论是品质还是装饰，都致力于创造一种恒久、富雅的生活享受。从世界领先的驱动技术到独具美学价值的风格设计，从尊贵庄重的外观到豪华典雅的内饰配备，无不独具匠心，成就高端品位电梯标杆，让身处高峰的您，在上下之间品位写意人生，尽显雅致风范。

Elegant living quality comes from your pursuit of perfection from your heart. Guangri home elevator, whether in terms of quality or decoration, is dedicated to creating a permanent, graceful enjoyment in life. Originality is shown from the world's leading drive technology to the design style with unique aesthetic value; from the honorable and graceful appearance to the luxurious and elegant interior accessories, making it possible to be a benchmark in high-end elevator, thus enabling you to enjoy elegance and gracefulness on your way up and down.

目录

CONTENTS

- 03 智慧·风范
Wisdom and style
- 05 自然·写意
Natural and free
- 07 安享·卓越
Enjoyment and excellence
- 09 标准配置
Standard configuration
- 10 有偿选配
Optional configuration at extra cost
- 15 土建布置
Layout drawing of shaft
- 17 功能配置
Introduction to functions
- 19 土建负责事项
Items in civil works
- 21 智能服务
Intelligent service

"智慧·风范" WISDOM AND STYLE "

▣ 永磁同步技术

新型永磁同步曳引机驱动技术,提高运行效率和载重余量。

▣ Permanent magnet synchronous technology

New type of permanent magnet synchronous traction machine drive technology can improve the operation efficiency and load margin.

▣ 三重救援

针对各种故障,设计专门的智能自动救援功能;标配集成ARD停电自救功能,即使断电,仍可自动驱动电梯平层放人;轿内一键拨号,可随时与专业救援人员联系,实现解困。

▣ Triple rescue

Specially designed intelligent automatic rescue function aims to all kinds of faults. The integrated ARD self-rescue function in case of power failure (standard configuration) enables the elevator to automatically level and let passengers out even in case of power failure. One-touch dial in the car can make the passenger contact the professional rescuers at any time to let the trapped person out.

▣ CAN通讯技术

控制系统采用先进的CAN串行通讯技术,有效提升数据传输能力,大大增强通讯可靠性。

▣ CAN communication technology

The advanced CAN serial communication technology for control system can effectively improve the data transmission capability and greatly enhance the communication reliability.

▣ IC卡专享功能

根据用户需求,可使用设置指定楼层的IC卡,避免干扰,保障安全。

▣ IC card exclusive function

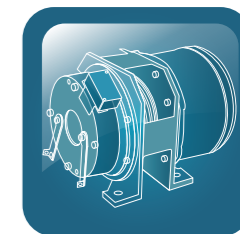
IC card for designated floors can be used according to the requirements of the user to avoid interference and ensure safety.

▣ 延时开门功能

轿门可设置延时开门,无需专人长按开门按钮,方便搬运及老幼通行。

▣ Door-opening delay function

Instead of long press of door-opening button, door-opening delay function is easier for goods handling and riding of the young and old.



永磁同步技术
Permanent magnet synchronous technology



延时开门功能
Door-opening delay function

"自然·写意"

NATURAL AND FREE



冗余设计

电梯控制和驱动控制采用冗余设计理念,多重保护,大大提高电梯安全系数,提供安心乘坐体验。

Redundancy design

Elevator control and drive control adopts the redundancy design concept with multiple protection, which greatly improves the safety coefficient of the elevator and makes the passengers enjoy more comfortable riding.

光幕系统

光幕最大扫描光束高达 154 束,实现无盲区检查,避免门机意外夹人,保障乘客安全。

Light curtain system

The largest scanning beam of light curtain is up to 154 beam, which can realize non-blind area check to avoid the passenger to be caught in the door accidentally by the door operator and to ensure the safety of passengers.

静音设计

控制柜 STO 技术通过 TUV 国际认证,确保运行噪音低;

先进的矢量控制及无称重传感器起补偿技术,在变速过程中平滑启动、无音运行;

曳引机及横流风机及盘式抱闸制动器,静音效果好,提供乘梯中平稳宁静的体验。

Noiseless design

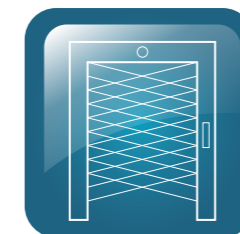
STO technology of control cabinet has obtained TUV international certification, which can lower the noise during running;

The advanced vector control and starting compensation technology of weighing-less sensor enable the smooth start and noiseless operation during speed governing;

Traction machine and cross-flow fan and disc brake has better muting effect and makes the passengers enjoy smooth and quiet riding.



冗余设计
Redundancy design



光幕系统
Light curtain system



静音设计
Noiseless design

"安享·卓越"

ENJOYMENT AND EXCELLENCE



时尚外观

控制柜小且薄，可嵌入墙体或挂于墙面，钣金喷涂；薄型挂壁式外呼盒和操纵箱嵌入式设计，配置 LED 液晶显示及盲文不锈钢按钮，外形美观大方。全新的轿厢设计，运用专业的光学原理，LED 暖光照明，既节能环保，又显舒适温馨，带给您前所未有的视觉体验，并有多多种轿厢装潢选择。

Fashionable appearance

The control cabinet made of coated metal plate is small and thin, and can be embedded into the wall or hung on the wall. The embedded design of thin wall-mountable hall-call box and operation panel with LED display and stainless steel braille button make the elevator beautiful and elegant. Brand new design of car with the professional optical principle and warm and comfortable LED lighting of energy-saving and environment-friendly concept will bring you an unprecedented visual experience. It has many options for car decoration.

井道设计

减小顶层及底坑空间，提高井道利用率。提供多种井道布置方式，适应家用环境各种空间限制。

Hoistway design

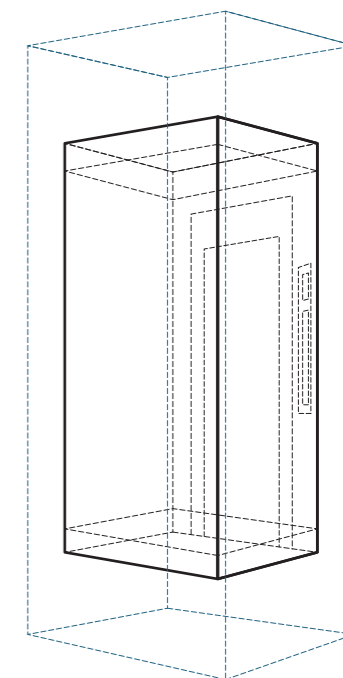
Reduce the space of top floor and pit to improve the utilization rate of hoistway. Various kinds of hoistway layout styles make it easier to adapt to all kinds of space limitations.

智能语音系统

电梯设置智能语音功能，自动播报运行信息、故障安抚、背景音乐等信息。

Intelligent voice system

The intelligent voice function of elevator can realize automatic broadcasting of operation information, pacification in case of failure and background music and so on.



无机房电梯井道布置
Roomless elevator hoistway layout

轿厢装饰 Decoration of car

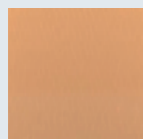
标准配置 Standard configuration



■ 吊顶 Ceiling
CL732L



■ 扶手 Handrails
HR761



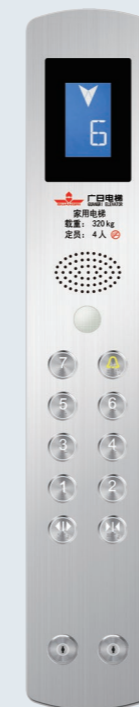
■ 喷涂颜色 Color of painting
GCRYB(09)007铂光金
GCRYB (09) 007 in platinum-luster gold color

■ CA732L

吊顶: CL732L, 碳钢喷涂铂光金, LED 面板灯, 筒灯
轿厢壁板: 碳钢喷涂铂光金 GCRYB(09)007
前壁组件: 碳钢喷涂铂光金 GCRYB(09)007
地板: FL045P, PVC
扶手: HR761, 发纹不锈钢圆扶手 (左侧)
轿门: 碳钢喷涂铂光金 GCRYB(09)007
轿厢净高: 2100mm

Ceiling: CL732L, carbon steel coated with platinum-luster gold paint, LED panel light, downlight
Car wall panel: Carbon steel coated with platinum-luster gold paint, GCRYB(09)007
Front wall components: Carbon steel coated with platinum-luster gold paint, GCRYB(09)007
Floor: FL045P, PVC
Handrail: HR761, hairline stainless steel round handrail (left side)
Car door: Carbon steel coated with platinum-luster gold paint, GCRYB(09)007
Clear height of car: 2100mm

标准配置 Standard configuration



■ 轿内操纵箱 Car Operation Panel
BOP64-SV0
4.3寸液晶段码显示蓝底白字
4.3 inch LCD segment code display with blue background and white characters



■ 厅外召唤箱 Hallcalling box
HBI64-SV18
4.3寸液晶段码显示蓝底白字
4.3 inch LCD segment code display with blue background and white characters



■ 按钮 Button
64型
圆型按钮 | 盲文 | 不锈钢面 | 白光
Round button | Braille | Stainless steel surface | White light

有偿选配 Optional configuration at extra cost



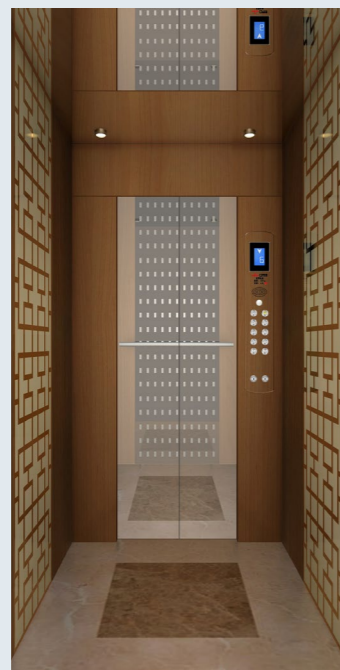
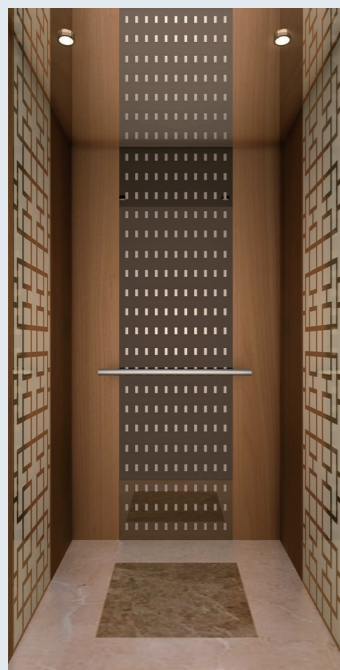
■ CA731L

吊顶: CL731L, 304 发纹不锈钢, LED 条灯, 筒灯
轿厢壁板: 304 发纹不锈钢
前壁组件: 304 发纹不锈钢
地板: FL045P, PVC
扶手: HR761, 发纹不锈钢圆扶手 (左侧)
轿门: 304 发纹不锈钢
轿厢净高: 2100mm

Ceiling: CL731L, 304 hairline stainless steel, LED panel light, downlight
Car wall panel: 304 hairline stainless steel
Front wall components: 304 hairline stainless steel
Floor: FL045P, PVC
Handrails: HR761, hairline stainless steel round handrail (left side)
Car door: 304 hairline stainless steel
Clear height of car: 2100mm

轿厢装饰 Decoration of car

有偿选配 Optional configuration at extra cost



■ CA139L

吊顶: CL120L, 镜面不锈钢, LED 筒灯
轿厢壁板: CP117, 侧前 / 后壁钢板贴膜木饰面, 侧中壁镜面蚀刻不锈钢, 后左右壁木饰面, 后中壁镜面蚀刻不锈钢
前壁组件: 钢板贴膜木饰面 (C105)
地板: FL095P, PVC
扶手: HR703, 不锈钢单管圆形扶手 (后侧)
轿门: 镜面不锈钢
轿厢净高: 2100mm

Ceiling: CL120L, mirror stainless steel, LED downlight
Car wall panel: CP117, side front/rear wall of filmed steel and wood finish, side mid-wall of mirror etched stainless steel, rear left and right wall of wood finish, rear mid-wall of mirror etched stainless steel
Front wall components: Filmed steel and wood finish (C105)
Floor: FL095P, PVC
Handrail: HR703, stainless steel single-tube round handrail (rear side)
Car door: Mirror stainless steel
Clear height of car: 2100mm

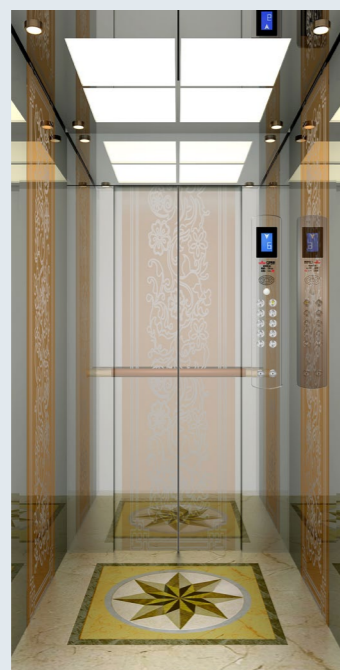
有偿选配 Optional configuration at extra cost



■ CA141L

吊顶: CL122L, 实木框架, 乳白透光板
轿厢壁板: CP119, 侧壁木纹装饰板, 上部装饰画后壁木纹装饰板, 上部中间方形镜面玻璃 (装饰画自理)
前壁组件: 镜面不锈钢
地板: FL097P, PVC
扶手: HR746, 中间木纹两端镜面不锈钢镀金色扶手 (后侧)
轿门: 镜面不锈钢
轿厢净高: 2100mm

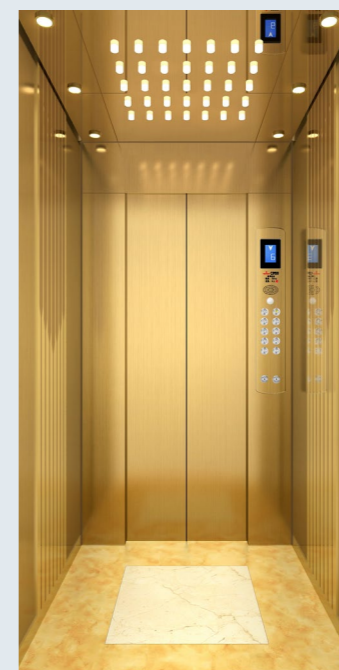
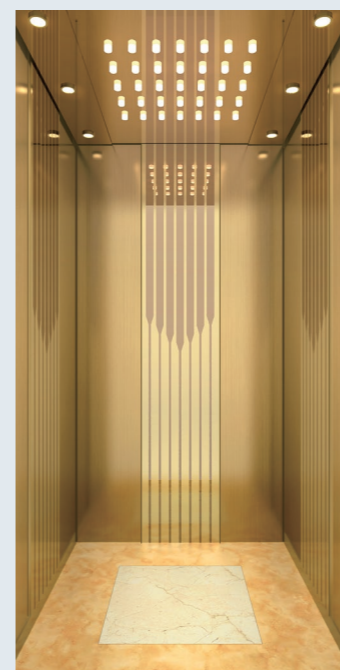
Ceiling: CL122L, wood frame with milk white translucent plate
Car wall panel: CP119, side wall of wood pattern decoration plate, with decoration picture at the top, rear wall of wood pattern decoration plate, mirror glass in the upper middle (the decoration picture shall be paid additionally)
Front wall components: Mirror stainless steel
Floor: FL097P, PVC
Handrail: HR746, intermediate golden plated mirror stainless steel handrail with wood grain on both side (rear side)
Car door: Mirror stainless steel
Clear height of car: 2100mm



■ CA140L

吊顶: CL121L, 镜面不锈钢框架, 透光板, 筒灯
轿厢壁板: CP118, 侧前 / 后壁镜面不锈钢, 侧中壁镜面不锈钢蚀刻镀玫瑰金, 后左右壁镜面不锈钢, 后中壁镜面不锈钢蚀刻镀玫瑰金
前壁组件: 镜面不锈钢
地板: FL096P, PVC
扶手: HR746, 中间木纹两端镜面不锈钢镀金色扶手 (后侧)
轿门: 镜面不锈钢
轿厢净高: 2100mm

Ceiling: CL121L, mirror stainless steel frame with translucent plate, and downlight
Car wall panel: CP118, Side front/rear wall of mirror stainless steel, side mid-wall of rose golden plated mirror-etched stainless steel, rear left and right wall of mirror stainless steel, rear mid-wall of rose golden plated mirror-etched stainless steel
Front wall components: Mirror stainless steel
Floor: FL096P, PVC
Handrail: HR746, intermediate golden plated mirror stainless steel handrail with wood grain on both side (rear side)
Car door: Mirror stainless steel
Clear height of car: 2100mm



■ CA142L

吊顶: CL123L, 镜面不锈钢镀金色, 中间圆型亚克力灯饰, 四周 LED 筒灯
轿厢壁板: CP120, 侧前 / 后壁发纹不锈钢镀金色, 侧中壁镜面蚀刻不锈钢镀金色, 后左 / 右壁发纹不锈钢镀金色, 后中壁镜面蚀刻不锈钢镀金色
前壁组件: 发纹不锈钢镀金色
地板: FL098P, PVC
轿门: 发纹不锈钢镀金色
轿厢净高: 2100mm

Ceiling: CL123L, golden plated mirror stainless steel, intermediate round acrylic light and LED downlight frame around
Car wall panel: CP120, side front/rear wall of golden plated hairline stainless steel, side mid-wall of golden plated mirror etched stainless steel, rear left and right wall of golden plated hairline stainless steel, rear and side mid-wall golden plated mirror etched stainless steel
Front wall components: Golden plated hairline stainless steel
Floor: FL098P, PVC
Car door: Golden plated hairline stainless steel
Clear height of car: 2100mm

轿厢装饰 Decoration of car

有偿选配 Optional configuration at extra cost



■ G021L

- 吊顶: CL125L, 发纹不锈钢、透光板、筒灯
- 轿厢壁板: CP123, 发纹不锈钢框架 + 观光玻璃(局部磨砂线条)
- 前壁组件: 发纹不锈钢
- 地板: FL100P, PVC
- 扶手: HR013, 三面发纹不锈钢圆形落地扶手
- 轿门: 发纹不锈钢轿门或玻璃门(发纹不锈钢框架)
- 轿厢净高: 2100mm

Ceiling: CL125L, hairline stainless steel, translucent plate, downlight
 Car wall panel: CP123, Hairline stainless steel framework + sightseeing glass(local grind line)
 Front wall components: Hairline stainless steel
 Floor: FL100P, PVC
 Handrail: HR013, three sides of hairline stainless steel, round end to the ground
 Car door: Hairline stainless steel door or glass door (hairline stainless steel frame)
 Clear height of car: 2100mm



■ G022L

- 吊顶: CL126L, 发纹不锈钢、透光板
- 轿厢壁板: CP124, 左侧, 后侧发纹不锈钢框架 + 观光玻璃(局部磨砂线条), 右侧发纹不锈钢蚀刻
- 前壁组件: 发纹不锈钢
- 地板: FL100P, PVC
- 扶手: HR014, 发纹不锈钢圆形落地扶手(后侧+左侧)
- 轿门: 发纹不锈钢轿门或玻璃门(发纹不锈钢框架)
- 轿厢净高: 2100mm

Ceiling: CL126L, hairline stainless steel, translucent plate
 Car wall panel: CP124, left side and rear side of hairline stainless steel framework + sightseeing glass(local grind line), right side of hairline stainless steel with etched pattern decorative pattern
 Front wall components: GY-000 hairline stainless steel
 Floor: FL100P, PVC
 Handrail: HR014, hairline stainless steel round landed handrail (rear side + left side)
 Car door: Hairline stainless steel round landed handrail (hairline stainless steel frame)
 Clear height of car: 2100mm

有偿选配 Optional configuration at extra cost

■ 轿内操纵箱 Car Operation Panel



BOP64-SR0



DOP64-SV0



DOP64-SR0

■ 厅外召唤箱 Hallcalling box



HBI64-SR18



HBI34-PK32

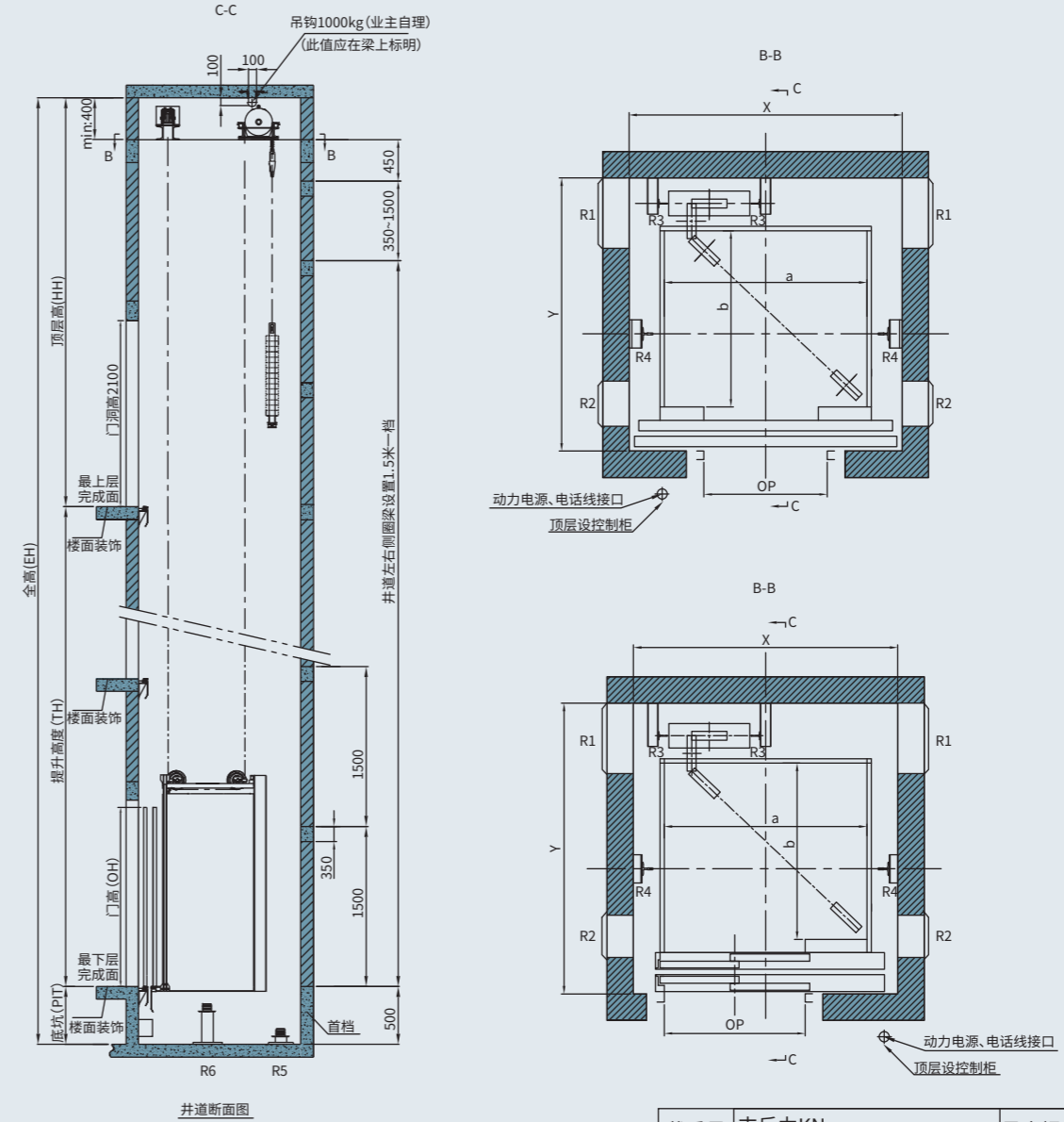
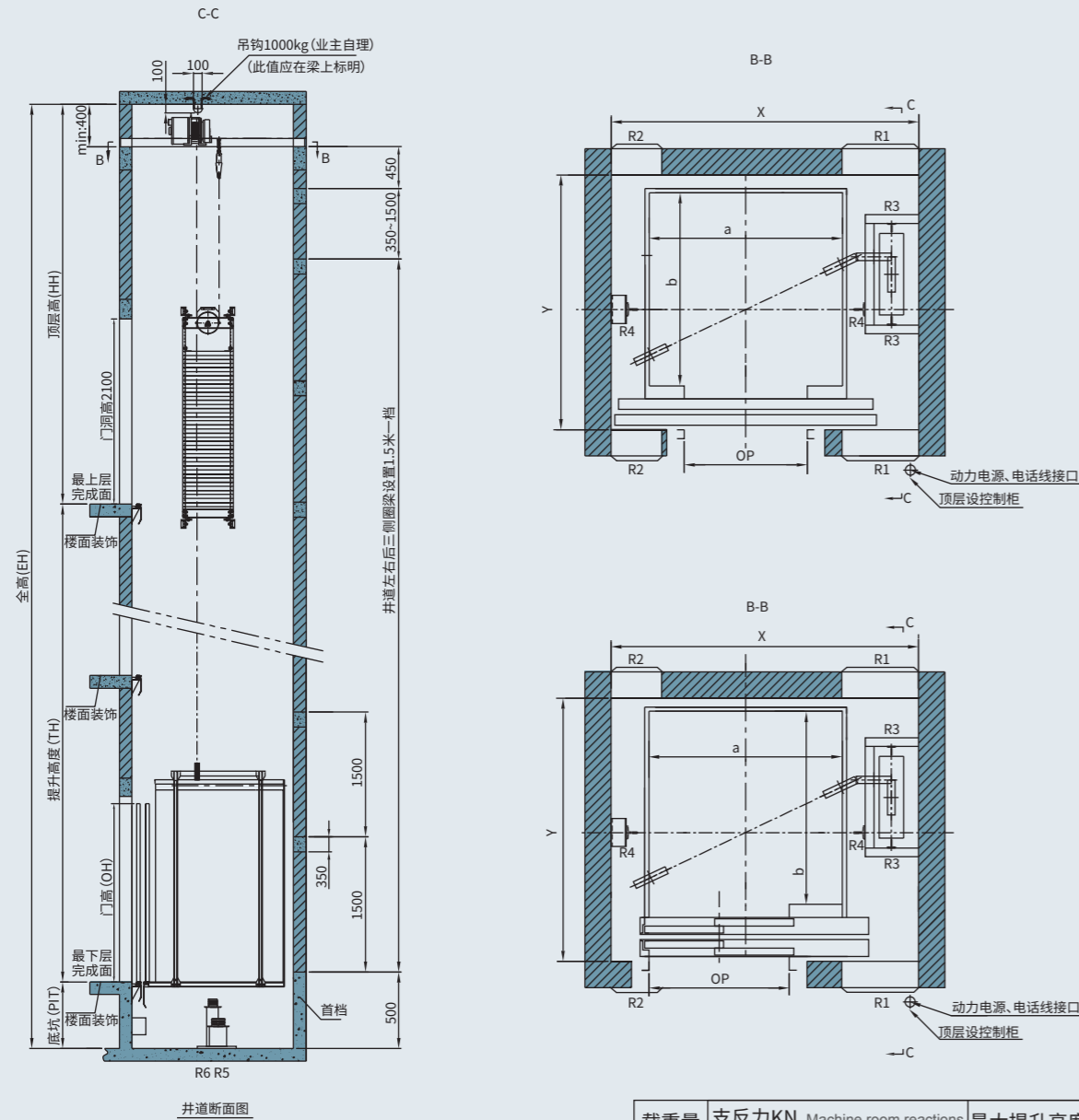
■ 按钮 Button



43型
 方型按钮 | 盲文 | 不锈钢面 | 白光
 Square button | Braille | Stainless steel surface | White light

* 装饰轿厢说明: 图示选配轿厢操纵箱样式仅为参考, 实物以合同签订操纵箱型号为准。
 * Please be noted: Operation panel inside car is just for reference, which can be customized and finalized in sales contract.

土建布置 Layout drawing of shaft



载重量 Load(kg)	支反力KN Machine room reactions						最大提升高度(m) Max. lifting height(m)	最大停站数 Max. no. of stops
	R1	R2	R3	R4	R5	R6		
320	13	6	15	15	24	16	15	6
400	13	6	15	15	24	16		

载重量 Load(kg)	支反力KN Machine room reactions						最大提升高度(m) Max. lifting height(m)	最大停站数 Max. no. of stops
	R1	R2	R3	R4	R5	R6		
320	15	8	15	15	24	16	15	6
400	15	8	15	15	24	16		

单开侧置 Side-placed single door

规格 Specifications	乘员(人) Passenger (Per)	载重量(kg) Load(kg)	速度(m/s) Speed(m/s)	开门方式 Open mode	顶层高度(mm) Headroom height (mm)	底坑深度(mm) Depth of pit(mm)	开门尺寸(mm) Door opening(mm) OPxOH	轿厢内尺寸(mm) Car dimensions(mm) axb	井道尺寸(mm) Shaft dimensions (mm) XxY
MAX-H320-2S0.4(N)	4	320	0.4	旁开双扇	3200	450	800x2000	1100x1000	1750x1400
MAX-H400-2S0.4(N)	5	400	0.4	旁开双扇	3200	450	800x2000	1100x1100	1750x1500
MAX-H320-CO0.4(N)	4	320	0.4	中开双扇	3200	450	700x2000	1100x1000	1750x1350
MAX-H400-CO0.4(N)	5	400	0.4	中开双扇	3200	450	700x2000	1100x1100	1750x1450

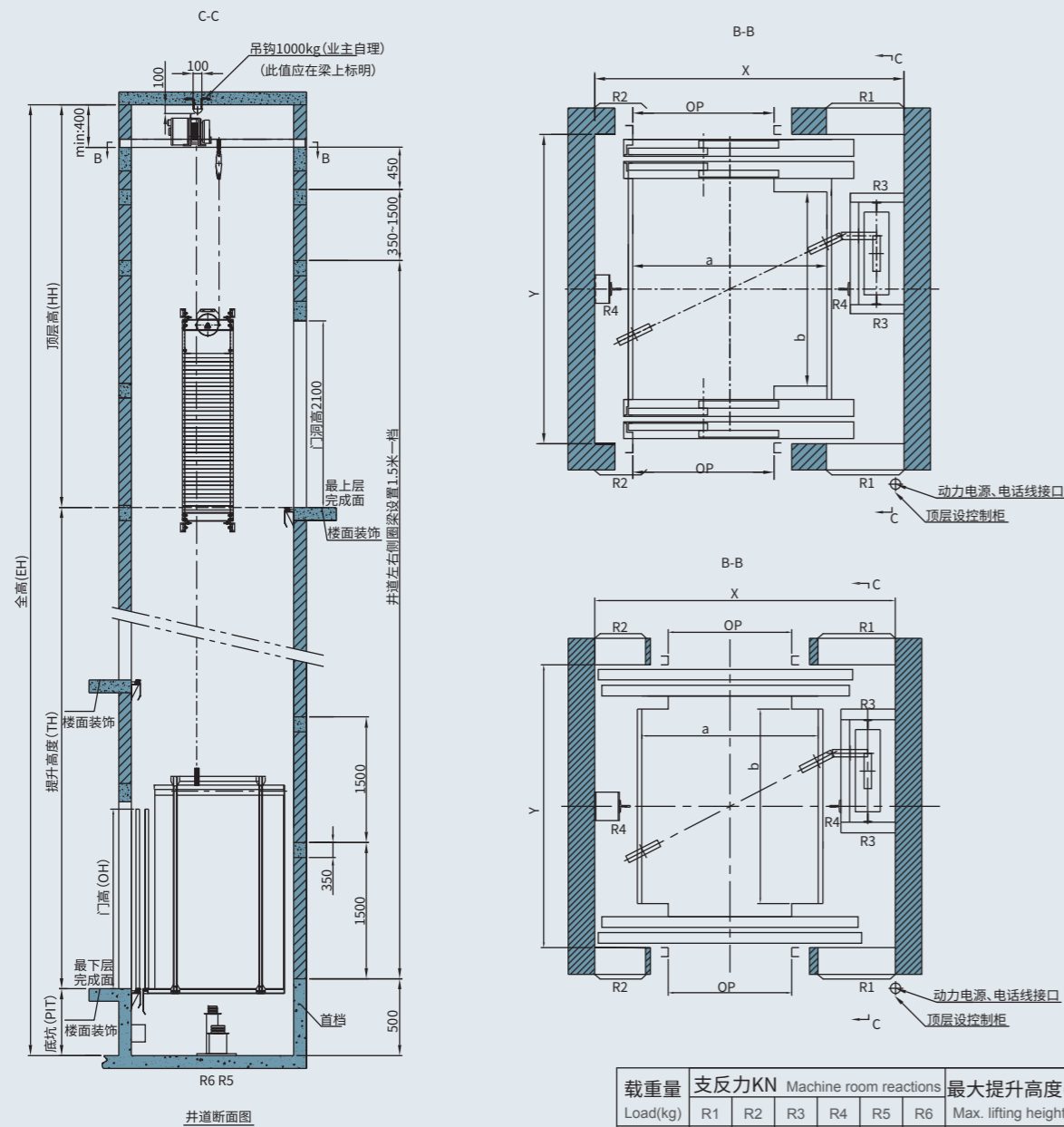
单开后置 Rear-placed single door

规格 Specifications	乘员(人) Passenger (Per)	载重量(kg) Load(kg)	速度(m/s) Speed(m/s)	开门方式 Open mode	顶层高度(mm) Headroom height (mm)	底坑深度(mm) Depth of pit(mm)	开门尺寸(mm) Door opening(mm) OPxOH	轿厢内尺寸(mm) Car dimensions(mm) axb	井道尺寸(mm) Shaft dimensions (mm) XxY
MAX-H320-2S0.4(N)	4	320	0.4	旁开双扇	3200	450	800x2000	1150x900	1500x1550
MAX-H400-2S0.4(N)	5	400	0.4	旁开双扇	3200	450	800x2000	1150x1000	1500x1650
MAX-H320-CO0.4(N)	4	320	0.4	中开双扇	3200	450	700x2000	1150x900	1550x1450
MAX-H400-CO0.4(N)	5	400	0.4	中开双扇	3200	450	700x2000	1150x1000	1550x1550

注: 选配轿厢(除 CA731L 外), 顶层高度加 100mm。
Noted: Overhead height should be 100 higher for optional car decoration models, except model CA731L.

注: 选配轿厢(除 CA731L 外), 顶层高度加 100mm。
Noted: Overhead height should be 100 higher for optional car decoration models, except model CA731L.

功能介绍 Introduction to functions



载重量 Load(kg)	支反力kN Machine room reactions						最大提升高度(m) Max. lifting height(m)	最大停站数 Max. no. of stops
	R1	R2	R3	R4	R5	R6		
320	13	6	15	15	24	16	15	6
400	13	6	15	15	24	16		

双开侧置 Side counterweight through opening

规格 Specifications	乘员(人) Passenger (Per)	载重量(kg) Load(kg)	速度(m/s) Speed(m/s)	开门方式 Open mode	顶层高度(mm) Headroom height (mm)	底坑深度(mm) Depth of pit(mm)	开门尺寸(mm) Door opening(mm) OPxOH	轿厢内尺寸(mm) Car dimensions(mm) axb	井道尺寸(mm) Shaft dimensions (mm) XxY
MAX-H320-2S0.4(N)	4	320	0.4	旁开双扇	3200	450	800x2000	1000x1130	1650x1750
MAX-H400-2S0.4(N)	5	400	0.4	旁开双扇	3200	450	800x2000	1100x1130	1750x1750
MAX-H320-CO0.4(N)	4	320	0.4	中开双扇	3200	450	700x2000	1000x1100	1700x1600
MAX-H400-CO0.4(N)	5	400	0.4	中开双扇	3200	450	700x2000	1100x1100	1750x1600

注: 选配轿厢(除 CA731L 外), 顶层高度加 100mm。
Noted: Overhead height should be 100 higher for optional car decoration models, except model CA731L.

基本功能



Basic Functions

检修运行方式	01	Maintenance and running mode
全集选控制	02	Full selective control
电梯自救运行	03	Elevator self-rescue operation
到站自动开门	04	Automatic door opening upon arrival
重复开门	05	Repeated door opening
关门按钮提前关门	06	Closing the door ahead of time by pressing the "Close" button
反向时自动消指令	07	Automatic correction of case of reversal or call
故障历史记录	08	History recoed of trouble
人性化手持编程器操作	09	Humanized hand-held programmer operation
井道层楼数据自学习	10	Self-learning of hoistway data
磁角度自学习功能	11	Self-learning function in terms of magnetic degree
层楼位置信号的自动修正	12	Automatic correction of floor position signal
泊梯	13	Parking
抱闸开关安全检测	14	Safety test of band-type brake switch
光幕保护	15	Light beam screen protection
门区外不能开门保护措施	16	Safety measures of door lockup outside door area
超载保护	17	Over-load protection
逆向运行保护	18	Protection against reverse travel
防溜车保护	19	Anti-stalling protection
防终端越程保护	20	Protection against over-travel at terminal
防打滑保护	21	Anti-sliding protection
火灾紧急返回运行	22	Emergency return in case of fire
永磁同步门机	23	Permanent magnetic synchronous
自动返基站	24	Automatic return to base station
智能语音	25	Intelligent voice
UPS 后备电源运行	26	Operation of UPS standby power supply
一键远程救援(国内)	27	One-click remote rescue (Domestic)

选配功能



Optional Functions

轿内延长开门时间	01	Door opening time delay inside the car
触板带光幕	02	Touch plate with light curtain
非数字字符楼层显示设定	03	Non-numeric character display settings for floors
双开门	04	Double door opening
轿内 IC 卡梯控功能	05	IC card control function inside the car
后壁中间镜面不锈钢	06	Car rear wall intermediate mirror stainless steel
玻璃轿门、厅门	07	Car door in glass, hall door in glass
物联网(国内)	08	Internet of things (Domestic)

|| 土建负责事项 Items in civil works

甲方负责土建事项说明

一、注意事项：

- 1) 电梯规格表中的尺寸只适用于标准技术规格,其他技术规格要求尺寸请咨询我司。
- 2) 电梯规格表中所示的井道尺寸为完成底坑防水工作后的最小尺寸,不包括井道垂直偏差,井道垂直偏差具体见土建技术要求。
- 3) 井道四壁为混凝土墙(厚度 $\geq 200\text{mm}$,混凝土强度不低于 C30)或圈梁砖墙(圈梁高度 $\geq 350\text{mm}$,厚度 $\geq 240\text{mm}$),不允许采用空心砖筑砌。
- 4) 井道最好不要设置紧邻居室或对声音敏感区域。如实际情况不能达到本规定,则用户应作好相关隔音减震措施。
- 5) 电梯井道最好不要设置在人们能到达的空间上面。如实际情况不能达到本规定,请与我司联络。
- 6) 如电梯井道为钢结构,请尽早与我司联络。
- 7) 若是对重设置安全钳,井道尺寸要求将会增加。
- 8) 当选用防火门时,井道尺寸要求将会增加。

二、电梯土建应满足的工作环境要求：

- 1) 机房或井道内的空气温度应保持在 $+5 \sim +40^{\circ}\text{C}$ 之间。
- 2) 运行地点的空气相对湿度在最高温度为 $+40^{\circ}\text{C}$ 时不超过 50%,在较低温度下可有较高的相对湿度,最湿月的月平均最低温度不超过 $+25^{\circ}\text{C}$,该月的月平均最大相对湿度不超过 90%。若可能在电器设备上产生凝露,应采取相应措施。
- 3) 供电形式为三相三线制,独立地线,电压相对于额定电压的波动应在 $\pm 7\%$ 范围内,电梯启动时电压降在 10% 以内。
- 4) 环境空气中不应含有腐蚀性和易燃性气体,污染等级不应大于 GB 14048.1-2006 规定的 3 级。

三、建筑物业主或总承办商负责的工作：

- 1) 建造电梯井道,并配备相关照明、通风及防水设备。
- 2) 根据要求预留孔或打孔,及其后进行修补。
- 3) 根据要求设置承重吊钩和标示吊钩最大承重值。
- 4) 当电梯井道尺寸过大超过规格尺寸,需要设独立隔梁;或同一井道安装两台及以上电梯,需要设中间梁。
- 5) 井道内或机房的隔音。
- 6) 如果中间有多层不停层,需在井道适当地方设置紧急出口。
- 7) 安排配电箱、动力电源电线和照明电线以及到电气房的电源。
- 8) 在电梯施工期间提供一个适当的、可上锁的地方,以便存放电梯设备和工具。
- 9) 免费提供适量的水泥和混凝土用于捣制踏板及缓冲墩座等。
- 10) 电梯安装完毕后,完成电梯候梯厅四周的墙及地板的整修。
- 11) 完成所有其他建筑物相关的承建工作。
- 12) 安排电话通信线缆接口至控制柜安装位置。

☆ 海外土建负责事项请咨询广日电梯进出口科。

Party A shall be responsible for the statement of civil engineering matters

Attention:

- 1) The dimensions in this table are only applicable to the standard specifications, for other required specification sizes, please contact us.
- 2) Shaft dimensions in Parameter Table are minimal requirement after water-proof process in pit, but not included vertical deviation in shaft. For vertical deviation in shaft, please refer to technical requirement of civil works.
- 3) Shaft walls should be 200mm concrete walls or 240mm brick walls, hollow brick is prohibited.
- 4) Shaft close to living room or sound-sensitive area is not recommended; otherwise proper sound proof solution should be adopted by user.
- 5) Shaft over accessible area is not recommended, being that case please consult with our overseas department
- 6) If the shaft is steel construction, please consult with our overseas department.
- 7) If safety clamps is adopted on counterweight, shaft dimensions requirement shall be extended.
- 8) If fire-proof door is adopted, shaft dimensions requirement shall be extended.

Working environment for civil work:

- 1) Temperature in machine room should be around $+5 \sim +40^{\circ}\text{C}$.
- 2) Relative humidity in running site should not be over 50% at highest temperature $+40^{\circ}\text{C}$. Higher relative humidity is allowed in lower temperature, in most humid month average lowest temperature should not be over $+25^{\circ}\text{C}$, average highest relative humidity should not be over 90%. Proper measures should be adopted to cope with possible condensation on electric equipment.
- 3) The Power Source should be in 3 Phases, 5 lines. Voltage fluctuation of power supply voltage should be within the tolerance of $\pm 7\%$ of rated voltage.
- 4) Erosive and flammable gases in air is prohibited, pollution level should exceed level 3 according code GB 14048.1-2006.

Responsibilities for property owner or contractor:

- 1) Shaft building and provision of associated equipments of lighting, ventilation and water-proofing.
- 2) Hole drilling on request and afterward patching / filling.
- 3) Lifting hook installation on request.
- 4) If the shaft dimension is larger than standard excessively, independent isolating beam needs to be set up; If more than 1 elevator will be installed in one shaft, intermediate beam should be needed.
- 5) Sound-proof work in shaft and machine room.
- 6) Emergency exit in shaft will be needed when vertical distance between two landing door is too long (11 meters).
- 7) Power distribution box, Power cord, lighting wires, power supply to electric equipment room.
- 8) Provision of suitable and lockable storeroom for elevator equipment and tools during elevator installation.
- 9) Provision of cement and concrete for step, base casting and cave filling. After installation, complete the renovations of walls and floors of the landing hall.
- 10) Walls and floor finishing restoration in waiting hall after installation.
- 11) Other necessary construction work.
- 12) Arrange the telephone communication cable interface to the control cabinet installation location.

* For items of overseas civil works, please consult with the Import & Export Department of Guangzhou Guangri Elevator Industry Co., Ltd

智能服务 Intelligent service

广日电梯始终坚持“服务创造价值”的理念，通过全球各地超过160多家的驻外分支机构和600多家授权合作网点，采用服务+互联网技术手段，应用云计算、大数据技术，为国内外客户提供安装、维修、保养、工程改造、咨询、培训等全生命周期的智能管理服务。

Guangri Elevator always adheres to the concept of "Service creates value" and provides domestic and foreign customers with life-circle intelligent management services, including installation, repair, maintenance, engineering reform, consultation and training, by virtue of the technological mean of "Service + Internet" and applying cloud computing and big data technology through over 160 branches and more than 600 authorized cooperative agents.



● 个性定制

产品定制方案快速生成、客户定制化管理系统、数据分享交互服务。

● Personalized customization

Quick generation of product customization scheme, customized management system and data sharing and interaction services



● 远程运维

远程运维服务平台、APP开发及应用。

● Remote operation and maintenance

Remote operation and maintenance service platform, APP development and application



● 远程监控

为客户建立完整档案及客户服务信息 (CRM), 实现远程维护和技术支持。

● Professional Team

We will establish a complete customer records and CRM, achieving remote maintenance and technology support.

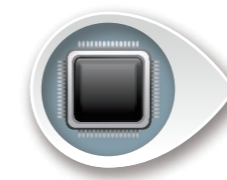


● 智能决策

专家咨询系统、智能决策系统、智能维保方案快速生成。

● Intelligent decision-making

Expert consultation system, intelligent decision-making system and quick generation of intelligent maintenance and improvement schemes



● 配件中心

在全国范围工程服务网络终端设立备件库及配件商城。

● Spare Parts Center

We will set up spare parts warehouse at the network terminals of engineering service and an online shop for spare parts.



● 全时响应

24小时全天候运行的客户服务中心，可随时为客户提供服务帮助。

● 24 Hours Response

Our customer service center is operated for 24 hours every day, helping our customers at any time.